

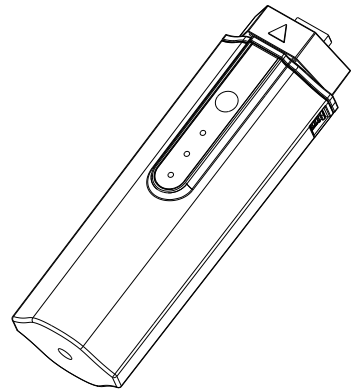


DATA COMMUNICATION STICK

HYX-DCS-W1

www.hyxipower.com
support@hyxipower.com

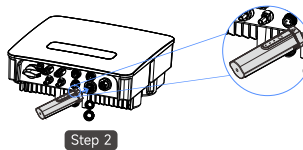
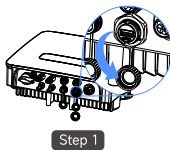
QUICK
INSTALLATION
GUIDE



1 Installation Preparation

WIFI Module (Model: HYX-DCS-W1)

- Step 1: Remove the waterproof cover at the communication interface of the inverter;
- Step 2: Align the triangular mark upward and centered, then Insert the communication stick into the corresponding communication terminal at the bottom of the inverter and tighten it to make sure it is secure.



Align the triangular mark upward and centered, then turn the lock cylinder clockwise.

2 System Commissioning

2.1 Installing the App

Method 1

Download the "HYXI APP" from the app store:

- App Store (IOS)
- Google Play

Method 2

Scan the QR code and download the APP:



App Download

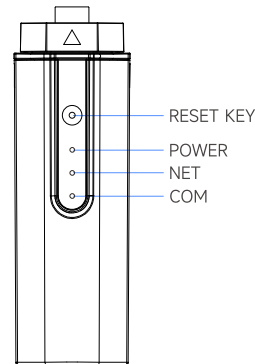
2.2 System Debugging

For more information on using the HYXI APP, please refer to the user manual "HYXI APP".



HYXI APP

3 Introduction of Indicator Lights



Indicator	Status	Description
POWER	ON	Power ON
	OFF	Power OFF
NET	Solid Green	Connected to the server
	Flashing	Connecting to the server
	OFF	Disconnected from the server
COM	Solid Green	Normal communication with inverter
	Flashing	Communicating with the inverter
	OFF	Communication with inverter failed

*** Reset Button:**

Press 2 times to restart, Press 3 times to enable local configuration (AP mode), Press 4 times to restore factory settings (Within 1 second between pressing).

Product information is subject to change without notice.

© 2026 Zhejiang Hyxi Technology Co., Ltd. All rights reserved.

6.2.51.18.00262

QL_HYX-DCS-W1_V1.0-202601_EN



www.hyxipower.com

Zhejiang Hyxi Technology Co., Ltd.