



Zhejiang Hyxi Technology Co., Ltd.

Email: global.sales@hyxipower.com
Website: www.hyxipower.com



LinkedIn



Official Website



YouTube



Instagram



Facebook



Driving Excellence in Every Watt
HYXiPOWER Product Catalog

IN 2025V1.0



Contents

About HYXiPOWER	03 - 08
Residential String Inverter PV Solution	09 - 20
Residential ESS Solution	21 - 32
Microinverter Solution	33 - 42
C&I PV and ESS Solution	43 - 60
Utility PV and ESS Solution	61 - 66
Accessories and Smart Energy Platform	67 - 76
Projects and Cases	77 - 80

About HYXiPOWER



Shaping the Infinite Future Through the Power of Light

Our Core Value

Quality, Innovation, Efficiency, Win-Win

Our Mission

Enjoy Green Energy Globally

Our Vision

To Be the World-leading Provider of Smart Renewable Energy Solutions

Zhejiang Hyxi Technology Co., Ltd. (referred to as "HYXiPOWER") is a high-tech enterprise specializing in smart PV & ESS, integrating R&D, manufacturing, sales, and services.

The company offers products such as photovoltaic inverters, energy storage systems, and smart energy platforms. Dedicated in providing leading renewable energy solutions for residential, C&I, and utility-scale applications, HYXiPOWER is deeply engaged in power electronic topology, core algorithms, thermal management, magnetics, EMC, BMS, EMS, AI, and smart energy platforms.

With over 70 core intellectual properties and more than 200 certifications received from global institutions such as TÜV Rheinland, CSA, Bureau Veritas, and SGS, HYXiPOWER operates 12 Global Technical Service Centers (GTAC) across six continents, promoting a greener, low-carbon and sustainable future in collaboration with global partners.

HYXiPOWER is committed to excellence through our "SUPER FIVE" concept

Super Service, Super Usability, Super Performance, Super Value, Super Reliability

It reflects our dedication to innovation and craftsmanship

Underpins our commitment to global sustainable energy development

Together, we pave the way to a greener, more sustainable world



SUPER FIVE

Driving Green Energy Innovation to Serve Global Customers



20+
Years R&D Experience

100+
Countries & Regions

24/7
Customer Support

70%
R&D Personnel

12
Global Technical Assistance Centers (GTACs)

200+
Local Professionals

70+
Core Intellectual Properties

14
Spare Parts Centers

1,000+
Service Partners

Top-Tier Manufacturing & Supply

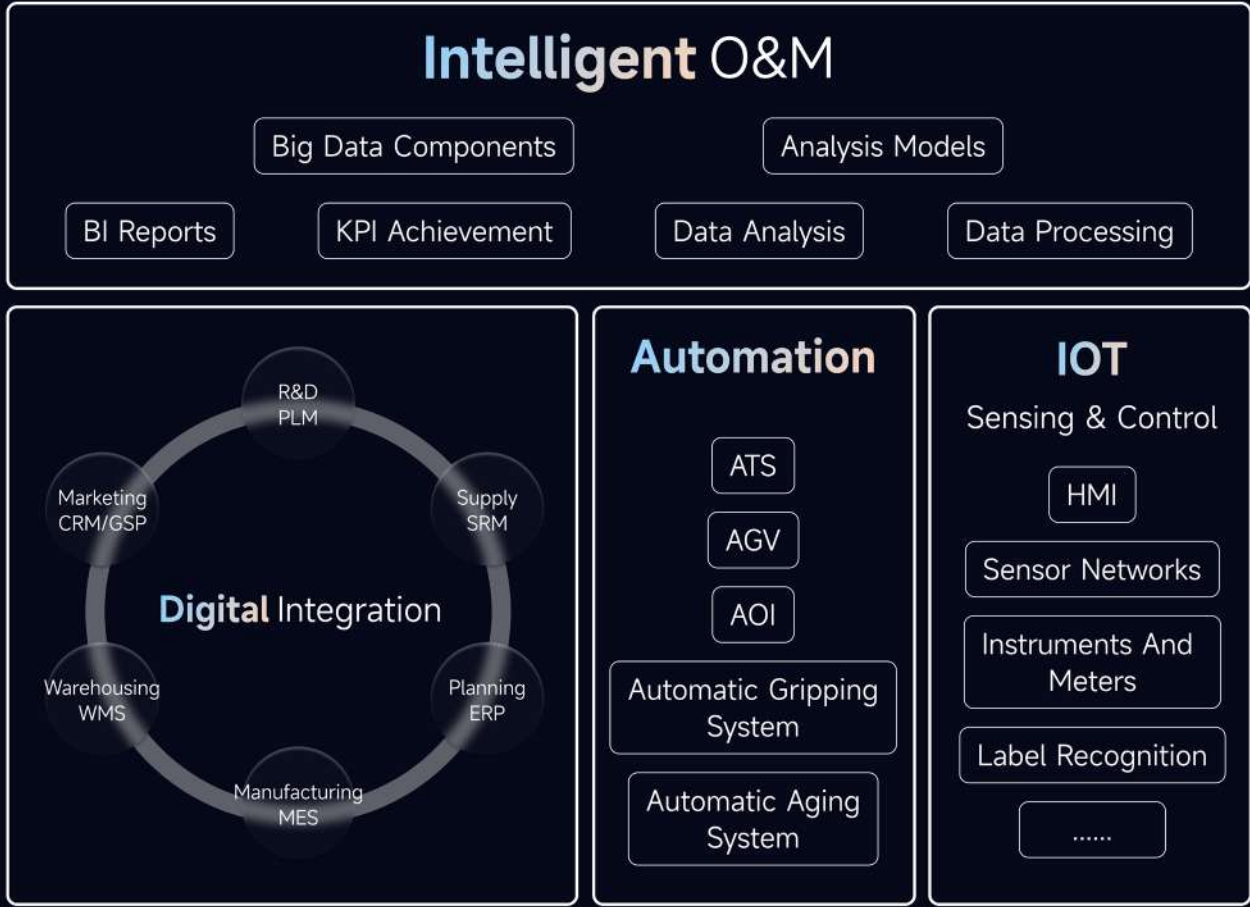
40,000+ Square Meters of Excellence



Green Production Line
Hangzhou · China | Main Production Base



AI Driven Smart Production
Jinhua · China | Battery Factory



Safety and Quality Assured

300+ Advanced Experimental Capabilities

Committed for 25 Years of Reliability

Extreme Environment Test Ensures
Durability in Various Conditions

82-Day

Residential ESS Product
Environmental Reliability Load Test



Water Immersion Test



Freezing Test



Rainfall Test

22

Environmental
Reliability Tests



EMC Test



High Temperature Test



Salt Spray Test

Precision Testing for Ultimate Reliability

Achieved through Comprehensive Quality Assurance

124,000+

Cumulative Electrical Reliability Tests

1,300

Grid Phase Angle
Mutation Tests

9,125

Grid Overshoot
Event Test

18,250

Voltage
Fluctuation Test

9,000

Grid Disconnection
Event Tests

1,300

Grid Voltage Sag
Event Tests

200

Four-Phase Angle
Surge Tests

2,300+

Performance & Extreme Condition Tests

500+

Key Performance Tests

Including stress testing, MPPT efficiency, anti-backflow, battery
efficiency, voltage adaptability, etc., ensuring safe operation

1,700+

Extreme Condition Tests

Covering weak grid adaptation, harmonic anomalies, load
compatibility, low-light simulation, battery emergency test etc.,
ensuring robust reliability



200+ Global Certifications

Recognized by TÜV Rheinland, CSA, Bureau Veritas, SGS, etc.





Residential String Inverter PV Solution


Overview

HYXiPOWER Residential String Inverter PV Solution enhances system reliability and power generation efficiency through a design where each module operates independently. Its flexible configuration adapts to various roof types, offering easy installation and suitability for different household scenarios. Combined with inverters and real-time monitoring, the system enables efficient energy management, optimizes power generation, reduces electricity costs, and helps users maximize self-consumption of green energy.

Highlight

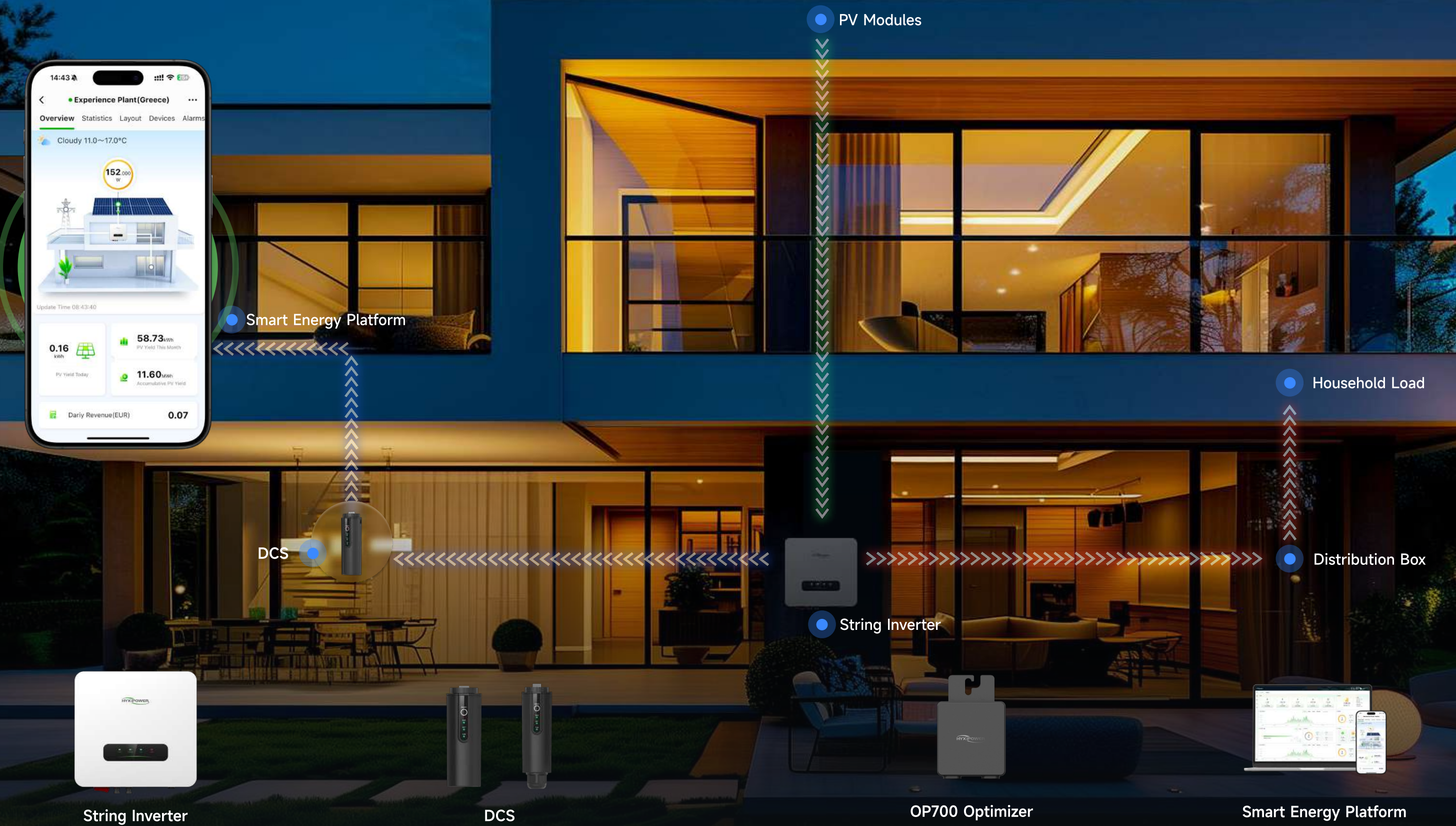
-  **Ultimate Safety**
- Type II DC/AC surge protection
 - Optional AFCI

-  **High Efficiency**
- 20A Max. DC input current, 98.5% high conversion efficiency
 - 160% over-sizing, maximizing returns

-  **User-Friendly**
- One-click power station configuration
 - Visualized data and information interface

-  **Intelligent O&M**
- IV curve smart diagnosis

Residential String Inverter PV Solution



STRING INVERTER

HYX-S2K/3K/3K3/3K6/
4K/4K6/5K/6K-S1



Reliable

- Type II surge protection
- 200m detection distance of AFCI, shutdown within 0.5 second at fastest
- IP66, suitable for harsh installation environment

Simple

- Minimalist and stylish product design
- Three-step quick installation
- Rapid APP configuration, efficient and convenient

Efficient

- 160% DC oversizing, wide MPPT voltage range
- 98.2% max. conversion efficiency
- 18A high current, compatible with major module types

Intelligent

- APP intelligent O&M, all-weather power station management
- Visual display, energy gain and data updated in real time
- Intelligent IV curve diagnosis, fast debugging

Product Model	HYX-S2K-S1	HYX-S3K-S1	HYX-S3K3-S1	HYX-S3K6-S1	HYX-S4K-S1	HYX-S4K6-S1	HYX-S5K-S1	HYX-S6K-S1
PV Input								
Max. Input Power	2,600W	3,900W	4,290W	4,680W	5,200W	5,980W	6,500W	7,800W
Max. Input Voltage	600V							
Rated Input Voltage	360V							
Start-up Voltage	100V							
MPPT Operating Voltage Range	80 - 560V							
MPPT Full Load Voltage Range	200 - 500V							
Max. Input Current Per MPPT	18A							
Max. Short-Circuit Current	25A							
Number of MPP Trackers	1					2		
Number of Input	1					2		
Max. Backfilling Current	0A							
AC Output								
Rated Output Power	2,000W	3,000W	3,300W	3,600W	4,000W	4,600W	5,000W	6,000W
Max. Apparent Power ¹	2,000VA	3,000VA	3,300VA	3,600VA	4,000VA	4,600VA	5,000VA	6,000VA
Rated Output Voltage	1 / N / PE, 220V / 230V / 240V							
Rated AC Grid Frequency	50 / 60Hz							
Rated Output Current	9.0A/220V	13.6A/220V	15.0A/220V	16.3A/220V	18.1A/220V	20.9A/220V	22.7A/220V	27.2A/220V
	8.6A/230V	13.0A/230V	14.3A/230V	15.6A/230V	17.3A/230V	20.0A/230V	21.7A/230V	26.0A/230V
	8.3A/240V	12.5A/240V	13.7A/240V	15.0A/240V	16.6A/240V	19.1A/240V	20.8A/240V	25.0A/240V
Max. Output Current	9.0A/220V	13.6A/220V	15.0A/220V	16.3A/220V	18.1A/220V	20.9A/220V	22.7A/220V	27.2A/220V
	8.6A/230V	13.0A/230V	14.3A/230V	15.6A/230V	17.3A/230V	20.0A/230V	21.7A/230V	26.0A/230V
	8.3A/240V	12.5A/240V	13.7A/240V	15.0A/240V	16.6A/240V	19.1A/240V	20.8A/240V	25.0A/240V
Adjustable Power Factor	0.8 leading...0.8 lagging							
THDi	< 3%							
Efficiency								
Max. Efficiency	97.7%					98.2%		
European Weighted Efficiency	97.2%					97.6%		
MPPT Efficiency	99.9%							
Protection								
Active Anti-islanding Protection	General Electric Frequency Shift							
Residual Current Monitoring	Yes							
DC Reverse Polarity Protection	Yes							
DC Switch	Yes							
AC Short-circuit Protection	Yes							
AC Overvoltage Protection	Yes							
AC Overcurrent Protection	Yes							
DC Surge Protection	Type II							
AC Surge Protection	Type II							
Ground Fault Detection	Yes							
AFCI	Yes							
General Data								
Operating Temperature Range	-30 to +60°C (Derating from 45°C)							
Relative Operating Humidity	0 - 100 %RH							
Operating Altitude	4,000m							
Cooling	Natural Cooling							
Display	LED+App							
Communication	RS485 / 4G / WIFI							
Weight	11.6kg							
Dimensions (W*H*D)	340*360*136mm							
Topology	Non-Isolated							
Degree of Protection	IP66							
Overvoltage Level	PV II / AC III							
Protection Class	I							
Nighttime Power Consumption	<1W							

※ Design and specifications are subject to change without notice. V1.0-202410 (draft version)

STRING INVERTER

HYX-S7K/8K/9K/
10K/12K-S



Safe & Reliable

- IP66, 1400+ cumulative rigorous tests
- PV optimizers compatible, module-level shutdown
- Type II DC/AC surge protection, lightning-proof
- 300m AFCI detection with 0.5s rapid shutdown

Convenient & User-Friendly

- Compact and lightweight design, plug-and-play installation
- App-based quick setup
- Intelligent layout with rapid module-level visualization

Profitable & Efficient

- 160% PV oversizing for extended output
- 20A design, ideal for high-power modules
- 98.3% efficiency with wide MPPT range

Smart & Manageable

- Module-level monitoring for precise fault positioning
- Intelligent IV diagnostics for precise fault identification
- Scenario-based app with real-time energy monitoring

HYX-S7K/8K/9K/10K/12K-S

Technical Specifications

Product Model	HYX-S7K-S	HYX-S8K-S	HYX-S9K-S	HYX-S10K-S	HYX-S12K-S
PV Input					
Max. Input Power	11,200W	12,800W	14,400W	16,000W	19,200W
Max. Input Voltage	600V				
Nominal Input Voltage	360V				
Start-up Voltage	80V				
MPPT Operating Voltage Range	40 - 560V				
MPPT Full Load Voltage Range	200 - 500V				
Max. Input Current Per MPPT	20A / 20A		20A / 20A / 20A		
Max. Short-Circuit Current	24A / 24A		24A / 24A / 24A		
Number of MPPT	2		3		
Max. Input Number Per MPPT	1 / 1		1 / 1 / 1		
AC Output					
Nominal Output Power	7,000W	8,000W	9,000W	10,000W	12,000W
Max. Apparent Power	7,700VA	8,800VA	9,900VA	11,000VA	13,200VA
Nominal Output Voltage	1 / N / PE, 220V / 230V / 240V				
Nominal AC Grid Frequency	50 / 60Hz				
Nominal Output Current	31.8A / 220V	36.4A / 220V	40.9A / 220V	45.5A / 220V	54.5A / 220V
	30.4A / 230V	34.8A / 230V	39.1A / 230V	43.5A / 230V	52.2A / 230V
	29.2A / 240V	33.3A / 240V	37.5A / 240V	41.7A / 240V	50A / 240V
Max. Output Current	35A / 220V	40A / 220V	45A / 220V	50A / 220V	60A / 220V
	33.4A / 230V	38.3A / 230V	43A / 230V	47.9A / 230V	57.42A / 230V
	32.1A / 240V	36.7A / 240V	41.3A / 240V	45.8A / 240V	55A / 240V
Adjustable Power Factor	0.8 leading...0.8 lagging				
THDi	< 3%				
Efficiency					
Max. Efficiency	98.2%				
European Weighted Efficiency	97.6%				
MPPT Efficiency	99.9%				
Protection					
Active Anti-islanding Protection	General Electric Frequency Shift				
Residual Current Monitoring	Yes				
DC Reverse Polarity Protection	Yes				
DC Switch	Yes				
AC Short-circuit Protection	Yes				
AC Overvoltage Protection	Yes				
AC Overcurrent Protection	Yes				
DC Surge Protection	Type II				
AC Surge Protection	Type II				
Ground Fault Detection	Yes				
AFCI	Yes				
General Data					
Operating Temperature Range	-30 to + 60°C				
Relative Operating Humidity	0 - 100 %RH				
Operating Altitude	4,000m				
Cooling	Natural Cooling				
Display	LED+App				
Communication	RS485 / 4G / WIFI				
Weight	23kg				
Dimensions (W*H*D)	522*416*162.5mm				
Topology	Non-Isolated				
Degree of Protection	IP66				
Overvoltage Level	PV II / AC III				

STRING INVERTER

HYX-S8K/10K/12K-T



Safe & Reliable

- IP66, 1400+ cumulative rigorous tests
- PV optimizers compatible, module-level shutdown
- Type II DC/AC surge protection, lightning-proof
- 300m AFCI detection with 0.5s rapid shutdown

Convenient & User-Friendly

- Compact and lightweight design, plug-and-play installation
- App-based quick setup
- Intelligent layout with rapid module-level visualization

Profitable & Efficient

- 160% PV oversizing for extended output
- 18A design, ideal for high-power modules
- 98.5% efficiency with wide MPPT range

Smart & Manageable

- Module-level monitoring for precise fault positioning
- Intelligent IV diagnostics for precise fault identification
- Scenario-based app with real-time energy monitoring

Product Model	HYX-S8K-T	HYX-S10K-T	HYX-S12K-T
PV Input			
Max. Input Power	12,800W	16,000W	19,200W
Max. Input Voltage		1,100V	
Nominal Input Voltage		600V	
Start-up Voltage		160V	
MPPT Operating Voltage Range		140 ~ 1,000V	
MPPT Full Load Voltage Range		330 ~ 850V	
Max. Input Current Per MPPT		18A	
Max. Short-Circuit Current		24A	
Number of MPPT		2	
Max. Input Number Per MPPT		1 / 1	
AC Output			
Nominal Output Power	8,000W	10,000W	12,000W
Max. Apparent Power	8,800VA	11,000VA	13,200VA
Nominal Output Voltage		3L / N / PE, 220 / 380V, 230 / 400V	
Nominal AC Grid Frequency		50 / 60Hz	
Nominal Output Current	12.2A / 380V	15.2A / 380V	18.2A / 380V
	11.5A / 400V	14.4A / 400V	17.3A / 400V
Max. Output Current	13.5A / 380V	16.9A / 380V	20.1A / 380V
	12.7A / 400V	15.8A / 400V	19.1A / 400V
Adjustable Power Factor		0.8 leading...0.8 lagging	
THDi		< 3%	
Efficiency			
Max. Efficiency		98.5%	
European Weighted Efficiency		98.1%	
MPPT Efficiency		99.9%	
Protection			
Active Anti-islanding Protection		General Electric Frequency Shift	
Residual Current Monitoring		Yes	
DC Reverse Polarity Protection		Yes	
DC Switch		Yes	
AC Short-circuit Protection		Yes	
AC Overvoltage Protection		Yes	
AC Overcurrent Protection		Yes	
DC Surge Protection		Type II	
AC Surge Protection		Type II	
Ground Fault Detection		Yes	
AFCI		Yes	
General Data			
Operating Temperature Range		-30 to + 60°C	
Relative Operating Humidity		0 ~ 100 %RH	
Operating Altitude		4,000m	
Cooling		Natural Cooling	
Display		LED+App	
Communication		RS485 / 4G / WIFI	
Weight		21kg	
Dimensions (W*H*D)		522*416*162.5mm	
Topology		Non-Isolated	
Degree of Protection		IP66	
Overvoltage Level		PV II / AC III	

STRING INVERTER

HYX-S15K/17K/
20K/25K-T



Safe & Reliable

- IP66, 1400+ cumulative rigorous tests
- PV optimizers compatible, module-level shutdown
- Type II DC/AC surge protection, lightning-proof
- 300m AFCI detection with 0.5s rapid shutdown

Convenient & User-Friendly

- Compact and lightweight design, plug-and-play installation
- App-based quick setup
- Intelligent layout with rapid module-level visualization

Profitable & Efficient

- 160% PV oversizing for extended output
- 40A design, ideal for high-power modules
- 98.5% efficiency with wide MPPT range

Smart & Manageable

- Module-level monitoring for precise fault positioning
- Intelligent IV diagnostics for precise fault identification
- Scenario-based app with real-time energy monitoring

Product Model	HYX-S15K-T	HYX-S17K-T	HYX-S20K-T	HYX-S25K-T
PV Input				
Max. Input Power	24,000W	27,200W	32,000W	40,000W
Max. Input Voltage			1,100V	
Nominal Input Voltage			600V	
Start-up Voltage			160V	
MPPT Operating Voltage Range		140 - 1,000V		
MPPT Full Load Voltage Range		315 - 850V		
Max. Input Current Per MPPT		40A		
Max. Input Current Per String		20A		
Max. Short-Circuit Current		50A		
Number of MPPT		2		
Max. Input Number Per MPPT		2 / 2		
AC Output				
Nominal Output Power	15,000W	17,000W	20,000W	25,000W
Max. Apparent Power	16,500VA	18,700VA	22,000VA	27,500VA
Nominal Output Voltage		3L / N / PE, 220 / 380V, 230 / 400V		
Nominal AC Grid Frequency		50 / 60Hz		
Nominal Output Current	22.8A / 380V 21.7A / 400V	25.8A / 380V 24.5A / 400V	30.4A / 380V 28.9A / 400V	38.0A / 380V 36.1A / 400V
Max. Output Current	25.2A / 380V 23.9A / 400V	28.6A / 380V 27.1A / 400V	33.6A / 380V 31.9A / 400V	42.0A / 380V 39.9A / 400V
Adjustable Power Factor		0.8 leading...0.8 lagging		
THDi		< 3%		
Efficiency				
Max. Efficiency		98.5%		
European Weighted Efficiency		98.2%		
MPPT Efficiency		99.9%		
Protection				
Active Anti-islanding Protection		General Electric Frequency Shift		
Residual Current Monitoring		Yes		
DC Reverse Polarity Protection		Yes		
DC Switch		Yes		
AC Short-circuit Protection		Yes		
AC Overvoltage Protection		Yes		
AC Overcurrent Protection		Yes		
DC Surge Protection		Type II		
AC Surge Protection		Type II		
Ground Fault Detection		Yes		
AFCI		Yes		
General Data				
Operating Temperature Range		-30 to + 60°C		
Relative Operating Humidity		0 - 100 %RH		
Operating Altitude		4,000m		
Cooling		Smart Air Cooling		
Display		LED+App		
Communication		RS485 / 4G / WIFI		
Weight		27kg		
Dimensions (W*H*D)		519*426*192mm		
Topology		Non-Isolated		
Degree of Protection		IP66		
Overvoltage Level		PV II / AC III		



Residential ESS Solution

Overview

HYXiPOWER Residential ESS Solution combines PV generation and storage for self-consumption. Supporting both grid-connected and off-grid modes, it is ideal for areas with unstable grids or price fluctuations. Using high-safety lithium iron phosphate batteries, it ensures stable operation and provides emergency power during outages, offering an efficient and energy-saving energy management solution.

Highlight



High Efficiency

- PV and energy storage integrated
- High conversion efficiency to maximize revenue



Safe and Reliable

- Cell-level management
- Real-time monitoring of battery operation status



Flexible Design

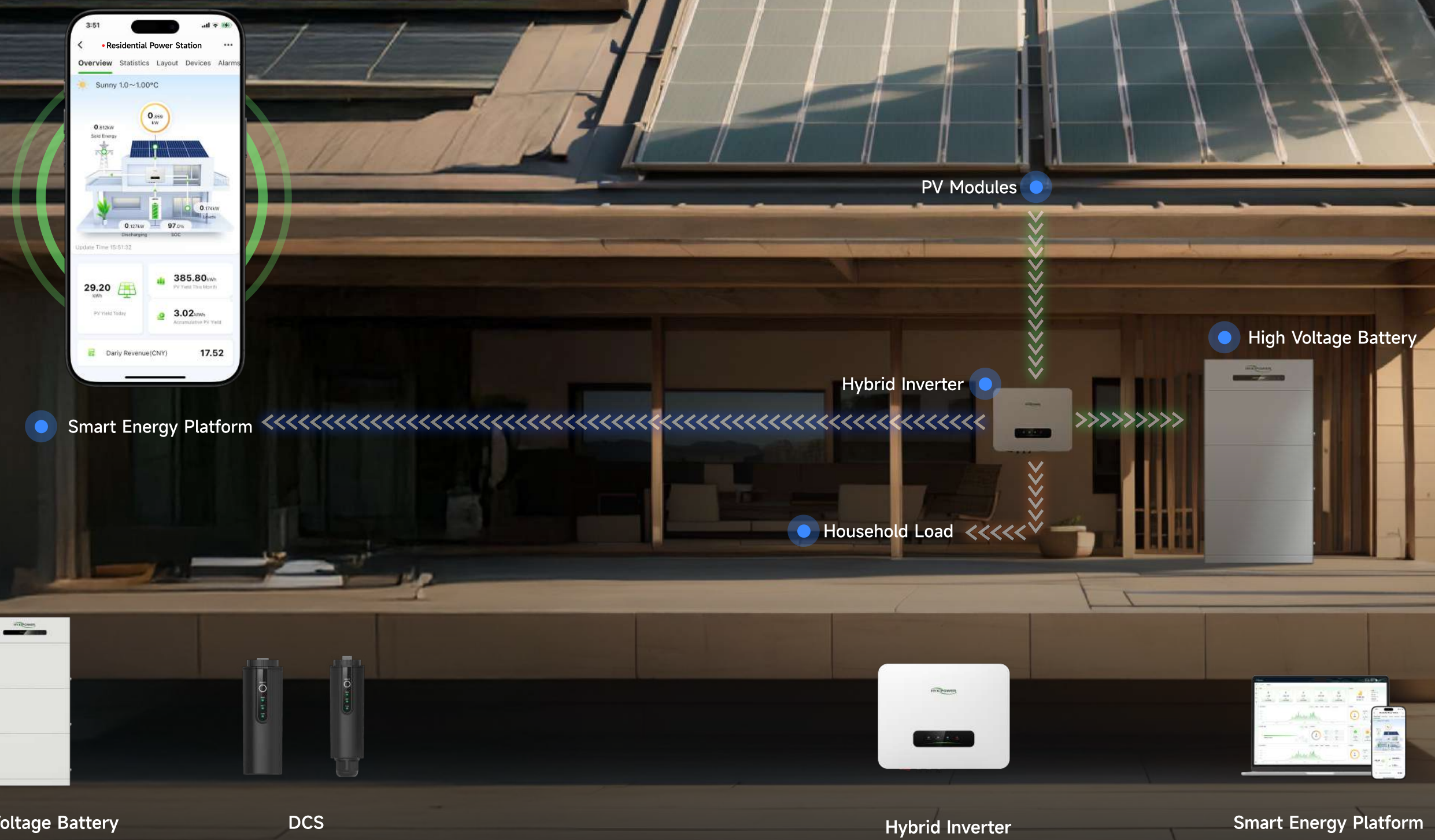
- Real-time monitoring of home power operation
- Multi-mode free switching



Intelligent O&M

- Intelligent detection for comprehensive O&M

Residential ESS Solution



HIGH VOLTAGE BATTERY

HYX-E50-H3

HYX-E100-H3



Safety

- Cell temperature collection, built-in breaker & fuse
- IP65 Protection degree

Performance



- 90% Depth of Discharge, Ultra-low power consumption
- LiFePO4 cell configuration, safety and long cycle life
- High Voltage and High Efficiency

Simplicity

- Integrated design, Easy Installation
- Streamlined structure, Space-saving

Flexible

- Wall-mounted & floor-mounted
- Scalable to 40kWh

Battery System	HYX-E50-H3	HYX-E100-H3
Appearance		
Total Battery Capacity	5.12kWh	10.4kWh
Usable Capacity ¹	4.6kWh	9.36kWh
Nominal Voltage	102.4V	208V
Working Voltage	86.4 - 115.2V	175.5 - 234V
Cell Type	LiFePO4	
Nominal Charging/Discharging Current	25A	
Max. Charge/Discharge Current	30A	
Peak Charge/Discharge Current	60A (10S, 25°C)	
Dimensions (W*H*D)	535*498*185.7mm	640*730*185mm
Net Weight	56kg	105kg
SOC Indicator	4*LED (25%, 50%, 75%, 100%)	
State Indicator	2*LED (work, alarm)	
Working Temperature	Charge: 0 to +55°C Discharge: -20 to +55°C	
Ingress Protection Rating	IP65	
Working Humidity	5 - 95%RH	
Calendar Life	> 6,000 (70%EOL)	
Installation	Wall-Mounted, Floor-Mounted	
Altitude	≤ 3,000m	
Communication	CAN, RS485	

1: Test conditions: 100% depth of discharge, 0.2C rate charge & discharge at 25°C, at the beginning of service life. Preliminary

HYBRID INVERTER

HYX-H3K/3K6/5K/6K-HS1



Reliable

- Type II surge protection
- IP65 design

Simple

- 30mins quick installation
- Easy working mode, set and forget
- Built-in meter, easy connection

Efficient

- 160% PV oversizing, 200% backup turbo output
- 50V ultra-low start-up voltage for longer operation
- 18A PV current wide adaptation

Intelligent

- Smart working logic
- Generator & AC couple retrofit support
- Mobile & PC platform management

HYX-H3K/3K6/5K/6K-HS1

Technical Specifications

Product Model	HYX-H3K-HS1	HYX-H3K6-HS1	HYX-H5K-HS1	HYX-H6K-HS1
PV Input				
Max. Input Power	4800W	5760W	8000W	9600W
Max. Input Voltage			600V	
Start-up Voltage			50V	
MPPT Operating Voltage Range		80 - 560V		
Max. Input Current		18A / 18A		
Max. Short-circuit Current		20A / 20A		
Number of MPP Trackers		2		
AC Input / Output				
Nominal Power	3000W	3600W	5000W	6000W
Max. Apparent Power	3300VA	3960VA	5500VA	6600VA
Nominal Current	13.6A	16.3A	22.7A	27.2A
Max. Current	15A	18A	25A	30A
Nominal Voltage		220 / 230 / 240V , 1 / N / PE		
AC Voltage Range		154 - 276V		
THDi		3 - 5%		
Frequency		50 / 45-55Hz; 60 / 55-65Hz		
Adjustable Power Factor		>0.99 / 0.8 leading...0.8 lagging		
DC Current Injection		< 0.5%In		
Back-Up(AC Output)				
Nominal Output Power	3000VA	3600VA	5000VA	6000VA
Max. Continues Output Apparent Power	3300VA	3960VA	5500VA	6600VA
Peak Output Power	6000W;10s	7200W;10s	10000W;10s	12000W;10s
Max. Output Current	15A	18A	25A	30A
Switch Time		< 10ms		
Battery				
Battery Type		LiFePO4		
Battery Voltage Range		80 - 490V		
Max. Charge/Discharge Current		30A		
Max. Charge Power	3000W	3600W	5000W	6000W
Max. Discharge Power	3300W	3960W	5500W	6600W
Protection				
Residual Current Monitoring		Yes		
DC/AC Surge Protection		Type II		
AC Short-circuit Protection		Yes		
AC Over Voltage Protection		Yes		
Over Frequency Pretecton		Yes		
Grounded Fault Detection		Yes		
General Data				
Operating Temperature Range		-25 to +60°C		
Relative Operating Humidity		0 - 100%RH		
Cooling		Natural Cooling		
Display		LED / App / Web		
Communication		CAN / RS485 /WiFi / 4G / LAN		
Weight		20kg		
Dimensions (W*H*D)		360*340*136mm		
Degree of Protection		IP65		
Over Voltage Category		DC II/ AC II		
Mounting		Wall Mounted		

HYBRID INVERTER

HYX-H5K/6K/8K/10K/12K-HT



Safe & Reliable

- Type II DC/AC surge protection, lightning-proof
- 300m AFCI detection with 0.5s rapid shutdown
- IP65, C4 salt spray resistance
- PV optimizers compatible, module-level shutdown

Convenient & User-Friendly

- Compact design, 30-minute quick installation
- App-enabled quick setup, simple and efficient
- Intelligent layout with rapid module-level visualization
- UPS-grade seamless on/off-grid switching

Profitable & Efficient

- Start-up of 160V, wide MPPT range for higher revenue
- 160% overload capacity, 150% instant off-grid overload
- 18A design, 35A battery fast charging/discharging

Smart & Manageable

- Intelligent IV diagnostics for precise fault identification
- Module-level monitoring for precise fault positioning
- Scenario-based app with real-time energy monitoring
- Intelligent control for generators and heat pumps

HYX-H5K/6K/8K/10K/12K-HT

Technical Specifications

Product Model	HYX-H5K-HT	HYX-H6K-HT	HYX-H8K-HT	HYX-H10K-HT	HYX-H12K-HT
PV Input					
Max. Array Power	10,000W	12,000W	16,000W	20,000W	24,000W
Max. Input Power	5,000W / 3,000W	6,000W / 4,000W	6,400W / 6,400W	6,400W / (4,800W/4,800W)	6,400W / (6,400W/6,400W)
Max. Input Voltage			1,000V		
Start-up Voltage			160V		
MPPT Operating Voltage Range			140 ~ 980V		
Max. Input Current	36A (18 / 18)		54A (18 / 18*2)		
Max. Short-circuit Current	60A (30 / 30)		90A (30 / 30*2)		
Number of MPPTs			2		
PV input number(Number of String Per MPPT)	2 (1 / 1)		3 (1 / 2)		
AC Input / Output					
Nominal Output Power	5,000W	6,000W	8,000W	10,000W	12,000W
Max. Output Apparent Power	5,500VA	6,600VA	8,800VA	11,000VA	13,200VA
Max. Input Apparent Power	11,000VA	13,200VA	17,600VA	22,000VA	26,400VA
Nominal Output Voltage	3 / N / PE, 220 / 380V, 230 / 400V, 240 / 415V				
Max. Output Current	8.4A	10A	13.4A	16.7A	20A
Max. Input Current	16.7A	20A	26.7A	33.4A	40A
Nominal Output Current	7.6A	9.1A	12.2A	15.2A	18.2A
THDi	< 3%				
Frequency	45-55Hz; 5-65Hz				
Adjustable Power Factor	0.8 leading...0.8 lagging				
DC Current Injection	< 0.5% In				
Back-Up(AC Output)					
Nominal Output Power	5,000VA	6,000VA	8,000VA	10,000VA	12,000VA
Max. Continues Output Apparent Power	5,500VA	6,600VA	8,800VA	11,000VA	13,200VA
Peak Output Power	7,500W; 10s	9,000W; 10s	12,000W; 10s	15,000W; 10s	15,000W; 10s
Nominal Output Current	7.6A	9.1A	12.2A	15.2A	18.2A
Max. Output Current	11.4A	13.7A	18.2A	22.8A	27.3A
Switch Time	< 10ms				
Battery					
Battery Type	LiFePO4				
Battery Voltage Range	150 ~ 600V				
Max. Charge/Discharge Current	40A				
Max. Charge/Discharge Power	5,500W	6,600W	8,800W	11,000W	13,200W
Efficiency					
Max. Efficiency	98.60%				
European Weighted Efficiency	98.20%				
MPPT Efficiency	99.90%				
Battery Charge/ Discharge Efficiency	97.50%				
Protection					
DC Insulation Resistance Detection	Yes				
Residual Current Monitoring	Yes				
DC Reverse Polarity Protection	Yes				
DC/AC Surge Protection	Type II				
DC Switch	Yes				
Anti-islanding Protection	Yes				
AC Over Current Protection	Yes				
AC Short-circuit Protection	Yes				
AC Over Voltage Protection	Yes				
Grounded Fault Detection	Yes				
General Data					
Operating Temperature Range	-30 to + 60°C				
Relative Operating Humidity	0 ~ 100 %RH				
Max. Operating Altitude	4,000m				
Cooling	Natural Cooling				
Display	LED / App / Web				
Communication	CAN / RS485 / WIFI / 4G / LAN				
Weight	34kg				
Dimensions (W*H*D)	542*478*186mm				
Degree of Protection	IP65				
Mounting	Wall Mounted				

HYBRID INVERTER

HYX-H15K/20K/25K-HT



Safe & Reliable

- Type II DC/AC surge protection, lightning-proof
- 300m AFCI detection with 0.5s rapid shutdown
- IP65, C4 salt spray resistance
- PV optimizers compatible, module-level shutdown

Convenient & User-Friendly

- Compact design, 30-minute quick installation
- App-enabled quick setup, simple and efficient
- Intelligent layout with rapid module-level visualization
- UPS-grade seamless on/off-grid switching

Profitable & Efficient

- Start-up of 160V, wide MPPT range for higher revenue
- 160% overload capacity, 150% instant off-grid overload
- 20A design, 60A battery fast charging/discharging

Smart & Manageable

- Intelligent IV diagnostics for precise fault identification
- Module-level monitoring for precise fault positioning
- Scenario-based app with real-time energy monitoring
- Intelligent control for generators and heat pumps

Product Model	HYX-H15K-HT	HYX-H20K-HT	HYX-H25K-HT
PV Input			
Max. Array Power	30,000W	40,000W	50,000W
Max. Input Power	(6,000W/6,000W) / (6,000W/6,000W)	(8,000W/8,000W) / (8,000W/8,000W)	(10,000W/10,000W) / (10,000W/10,000W)
Max. Input Voltage	1,100V		
Start-up Voltage	160V		
MPPT Operating Voltage Range	140 ~ 1,000V		
Max. Input Current	80A (20*2 / 20*2)		
Max. Short-circuit Current	120A (30*2 / 30*2)		
Number of MPPTs	2		
PV input number(Number of String Per MPPT)	4 (2 / 2)		
AC Input / Output			
Nominal Input / Output Apparent Power	31,500VA / 15,000VA	42,000VA / 20,000VA	52,500VA / 25,000VA
Max. Input / Output Apparent Power	33,000VA / 16,500VA	44,000VA / 22,000VA	55,000VA / 27,500VA
Nominal Input / Output Current	47.8A / 22.8A	63.7A / 30.4A	79.5A / 37.9A
Max. Input / Output Current	50.0A / 25.0A	66.7A / 33.4A	83.4A / 41.7A
Output Voltage Range	3 / N / PE, 220 / 380V, 230 / 400V, 240 / 415V		
Nominal Output Voltage	< 3%		
THDi	304 ~ 476V		
Frequency	50 / 60Hz		
Adjustable Power Factor	0.8 leading...0.8 lagging		
DC Current Injection	< 0.5% In		
Back-Up(AC Output)			
Nominal Output Power	15,000W	20,000W	25,000W
Max. Continues Output Apparent Power	16,500VA	22,000VA	27,500VA
Peak Output Power	22,500W; 10s	30,000W; 10s	30,000W; 10s
Nominal Output Current	22.8A	30.4A	37.9A
Max. Output Current	34.1A	45.5A	56.9A
Switch Time	< 10ms		
Battery			
Battery Type	LiFePO4		
Battery Voltage Range	150 ~ 600V		
Max. Charge/Discharge Current	60A		
Max. Charge/Discharge Power	16,500W	22,000W	27,500W
Efficiency			
Max. Efficiency	98.60%		
European Weighted Efficiency	98.20%		
MPPT Efficiency	99.90%		
Battery Charge/ Discharge Efficiency	97.70%		
Protection			
DC Insulation Resistance Detection	Yes		
Residual Current Monitoring	Yes		
DC Reverse Polarity Protection	Yes		
DC/AC Surge Protection	Type II		
DC Switch	Yes		
Anti-islanding Protection	Yes		
AC Over Current Protection	Yes		
AC Short-circuit Protection	Yes		
AC Over Voltage Protection	Yes		
Grounded Fault Detection	Yes		
General Data			
Operating Temperature Range	-30 to + 60°C		
Relative Operating Humidity	0 ~ 100 %RH		
Max. Operating Altitude	4,000m		
Cooling	Natural Cooling	Fan Cooling	Fan Cooling
Display	LED / App / Web		
Communication	CAN / RS485 / PLC / WIFI / 4G / LAN		
Weight	45kg		
Dimensions (W*H*D)	658*523*220mm		
Degree of Protection	IP65		
Mounting	Wall Mounted		



Microinverter Solution

Overview

HYXiPOWER Microinverter Solution supports module-level independent management, enabling one-stop monitoring and maintenance through a modular design and intelligent platform. The system delivers high-efficiency power generation, precise monitoring, and rapid fault isolation. Combined with an ultra-thin design and IP67 protection, it provides users with a safe, reliable, and efficient clean energy management experience.

Highlight



High Efficiency

- 16A Max. input current
- 150% over-sizing, maximizing returns



Safe and Reliable

- IP67
- 25-years warranty



Flexible Design

- 25mm ultra-thin body
- Flexible expansion



Intelligent O&M

- Module-level management

Microinverter Solution

Smart Energy Platform



Smart Energy Platform



1-in-1 Microinverter



2-in-1 Microinverter



4-in-1 Microinverter

Household Load

Microinverter (on the back)

PV Modules



MICRO INVERTER

HYX-M300/400/500-S

HYX-M300/400/500-SW



Safe & Reliable

- Built-in relay for emergency physical disconnection
- EMC-certified for household safety-level radiation
- 60V low-voltage operation, 6000V surge protection
- IP67, weatherproof and stable

Efficient & Optimized

- Start-up of 20V, 150% overload capacity for higher energy yield
- Module-level MPPT, supports 1 PV module with 500VA max. output
- 16A design, ideal for high-power PV modules

Easy & Flexible

- Compact hook design, easy installation
- Plug-and-play with flexible scalability
- Sub-1G and WiFi support, iMesh for stability

Smart & Manageable

- Intelligent layout with rapid module-level visualization
- Module-level monitoring for precise fault positioning
- One-click OTA enabling fast fault resolution

Product Model	HYX-M300-S HYX-M300-SW	HYX-M400-S HYX-M400-SW	HYX-M500-S HYX-M500-SW
Input (DC)			
Typical Module Compatibility	240 - 450* W	320 - 600* W	400 - 670* W
Min./Max. MPPT Voltage	16 - 60V		
Max. Input Voltage	65V		
Start-up Input Voltage	20V		
Max. Input Current	16A		
Max. Short-circuit DC Input Current	20A		
Output (AC)			
Nominal Output Power	300VA	400VA	500VA
Nominal Output Current	1.36A / 1.30A / 1.25A	1.82A / 1.74A / 1.67A	2.27A / 2.17A / 2.08A
Nominal Output Voltage	220V / 230V / 240V		
Adjustable Output Voltage Range	183 - 276V		
Nominal Frequency	50 / 60Hz		
Adjustable Output Frequency Range	45 - 55Hz, 55 - 65Hz		
Power Factor (default / adjustable)	>0.99 / 0.8 leading...0.8 lagging		
THDi	< 3%		
Max. Units Per 10AWG Branch	20 / 21 / 22	15 / 16 / 16	12 / 12 / 13
Max. Units Per 12AWG Branch	15 / 16 / 17	11 / 12 / 13	9 / 10 / 10
Efficiency			
Peak Efficiency	96.70%		
Nominal MPPT Efficiency	99.80%		
Night-time Power Loss	< 30mW		
General Data			
Operating Ambient Temperature	- 40 to + 65°C		
Dimensions (W*H*D)	188*178*25mm		
Degree of Protection	IP67		
Cooling	Natural Cooling - No fans		
Weight	1.7kg		
Features			
Communication ¹	Sub-1G / Built-in WiFi		
Type of Isolation	High frequency transformers, Galvanically isolated		
Warranty	12 years standard, 25 years optional		
Protection			
Input Reverse Connection Protection	Yes		
Output Overcurrent Protection	Yes		
Output Overvoltage Protection	Yes		
Anti-islanding Protection	Yes		
Output Short-circuit Protection	Yes		

1: **Sub-1G:** HYX-M300/400/500-S, **Built-in WiFi:** HYX-M300/400/500-SW
Nominal voltage/frequency range can vary depending on local requirements.
Refer to local requirements for exact number of microinverters per branch.

MICRO INVERTER

HYX-M600/700/800/900/1000-S
HYX-M600/700/800/900/1000-SW



Safe & Reliable

- Built-in relay for emergency physical disconnection
- EMC-certified for household safety-level radiation
- 60V low-voltage operation, 6000V surge protection
- IP67, weatherproof and stable

Efficient & Optimized

- Start-up of 20V, 150% overload capacity for higher energy yield
- Module-level MPPT, supports 2 PV module with 1000VA max. output
- 16A design, ideal for high-power PV modules

Easy & Flexible

- Compact hook design, easy installation
- Plug-and-play with flexible scalability
- Sub-1G and WiFi support, iMesh for stability

Smart & Manageable

- Intelligent layout with rapid module-level visualization
- Module-level monitoring for precise fault positioning
- One-click OTA enabling fast fault resolution

HYX-M600/700/800/900/1000-S
HYX-M600/700/800/900/1000-SW
Technical Specifications

Product Model	HYX-M600-S HYX-M600-SW	HYX-M700-S HYX-M700-SW	HYX-M800-S HYX-M800-SW	HYX-M900-S HYX-M900-SW	HYX-M1000-S HYX-M1000-SW
Input (DC)					
Typical Module Compatibility	240 - 450* W	280 - 525* W	320 - 600* W	360 - 670* W	400 - 670* W
Min./Max. MPPT Voltage	16 - 60V				
Max. Input Voltage	65V				
Start-up Input Voltage	20V				
Max. Input Current	2*16A				
Max. Short-circuit DC Input Current	2*20A				
Output (AC)					
Nominal Output Power	600VA	700VA	800VA	900VA	1000VA
Nominal Output Current	2.73A / 2.61A / 2.5A	3.18A / 3.04A / 2.92A	3.64A / 3.48A / 3.33A	4.09A / 3.91A / 3.75A	4.55A / 4.35A / 4.17A
Nominal Output Voltage	220V / 230V / 240V				
Adjustable Output Voltage Range	183 - 276V				
Nominal Frequency	50 / 60Hz				
Adjustable Output Frequency Range	45 - 55Hz, 55 - 65Hz				
Power Factor (default / adjustable)	>0.99 / 0.8 leading...0.8 lagging				
THDi	< 3%				
Max. Units Per 10AWG Branch	10 / 10 / 11	8 / 9 / 9	7 / 8 / 8	6 / 6 / 6	6 / 6 / 6
Max. Units Per 12AWG Branch	7 / 8 / 8	6 / 7 / 7	5 / 6 / 6	5 / 5 / 5	4 / 5 / 5
Efficiency					
Peak Efficiency	96.70%				
Nominal MPPT Efficiency	99.80%				
Night-time Power Loss	< 30mW				
General Data					
Operating Ambient Temperature	- 40 to + 65°C				
Dimensions (W*H*D)	252*180*35mm				
Degree of Protection	IP67				
Cooling	Natural Cooling - No fans				
Weight	3kg				
Features					
Communication ¹	Sub-1G / Built-in WiFi				
Type of Isolation	High frequency transformers, Galvanically isolated				
Warranty	12 years standard, 25 years optional				
Protection					
Input Reverse Connection Protection	Yes				
Output Overcurrent Protection	Yes				
Output Overvoltage Protection	Yes				
Anti-islanding Protection	Yes				
Output Short-circuit Protection	Yes				

1: **Sub-1G:** HYX-M600/700/800/900/1000-S, **Built-in WiFi:** HYX-M600/700/800/900/1000-SW
Nominal voltage/frequency range can vary depending on local requirements.
Refer to local requirements for exact number of microinverters per branch.

MICRO INVERTER

HYX-M1600/1800/2000-S
HYX-M1600/1800/2000-SW



Safe & Reliable

- Built-in relay for emergency physical disconnection
- EMC-certified for household safety-level radiation
- 60V low-voltage operation, 6000V surge protection
- IP67, weatherproof and stable

Efficient & Optimized

- Start-up of 20V, 150% overload capacity for higher energy yield
- Module-level MPPT, supports 4 PV module with 2000VA max. output
- 16A design, ideal for high-power PV modules

Easy & Flexible

- Compact hook design, easy installation
- Plug-and-play with flexible scalability
- Sub-1G and WiFi support, iMesh for stability

Smart & Manageable

- Intelligent layout with rapid module-level visualization
- Module-level monitoring for precise fault positioning
- One-click OTA enabling fast fault resolution

Product Model	HYX-M1600-S HYX-M1600-SW	HYX-M1800-S HYX-M1800-SW	HYX-M2000-S HYX-M2000-SW
Input (DC)			
Typical Module Compatibility	320 - 600* W	360 - 670* W	400 - 670* W
Min./Max. MPPT Voltage	16 - 60V		
Max. Input Voltage	65V		
Start-up Input Voltage	20V		
Max. Input Current	4*16A		
Max. Short-circuit DC Input Current	4*20A		
Output (AC)			
Nominal Output Power	1600VA	1800VA	2000VA
Nominal Output Current	7.27A / 6.96A / 6.67A	8.18A / 7.83A / 7.50A	9.09A / 8.70A / 8.33A
Nominal Output Voltage	220V / 230V / 240V		
Adjustable Output Voltage Range	183 - 276V		
Nominal Frequency	50 / 60Hz		
Adjustable Output Frequency Range	45 - 55Hz, 55 - 65Hz		
Power Factor (default / adjustable)	>0.99 / 0.8 leading...0.8 lagging		
THDi	< 3%		
Max. Units Per 10AWG Branch	3 / 4 / 4	3 / 3 / 3	3 / 3 / 3
Max. Units Per 12AWG Branch	2 / 3 / 3	2 / 2 / 2	2 / 2 / 2
Efficiency			
Peak Efficiency	96.70%		
Nominal MPPT Efficiency	99.80%		
Night-time Power Loss	< 30mW		
General Data			
Operating Ambient Temperature	- 40 to + 65°C		
Dimensions (W*H*D)	310*236*35.5mm		
Degree of Protection	IP67		
Cooling	Natural Cooling - No fans		
Weight	5kg		
Features			
Communication ¹	Sub-1G / Built-in WiFi		
Type of Isolation	High frequency transformers, Galvanically isolated		
Warranty	12 years standard, 25 years optional		
Protection			
Input Reverse Connection Protection	Yes		
Output Overcurrent Protection	Yes		
Output Overvoltage Protection	Yes		
Anti-islanding Protection	Yes		
Output Short-circuit Protection	Yes		

1: **Sub-1G:** HYX-M1600/1800/2000-S, **Built-in WiFi:** HYX-M1600/1800/2000-SW
Nominal voltage/frequency range can vary depending on local requirements.
Refer to local requirements for exact number of microinverters per branch.



C&I PV and ESS Solution

Overview

HYXiPOWER C&I PV and ESS Solution combines PV generation and storage systems to enable self-consumption, peak shaving, and Time-of-use (TOU) arbitrage. It optimizes energy use, stores electricity during low-price periods, and releases it during peak times, reducing electricity costs. Supporting both grid-connected and off-grid modes, it suits areas with unstable grids or price fluctuations. The system uses high-safety lithium iron phosphate batteries for stable, efficient operation, driving both energy savings and economic benefits.

Highlight



Safe and Reliable

- Superior algorithms to ensure equipment stability
- Safeguard system operation during off-grid



High Efficiency

- Meeting daytime power needs, reducing reliance on the grid
- Surplus electricity can be sold to the grid, maximizing returns



Eco-Friendly

- Reduce carbon emissions



Intelligent O&M

- Real-time monitoring, remote maintenance
- One-stop O&M interface

HYBRID ESS CABINET

50-125kW

215kWh



Safe & Reliable

- A+ grade cells with automotive-grade standard
- Five-level safety design
- 300m AFCI detection with 0.5s rapid shutdown
- Support three-phase unbalance output
- IP66 for inverter, IP55 for cabinet

Convenient & User-Friendly

- Compact & Lightweight Design, pre-installed for easy installation
- Flexible parallel connection of cabinets
- App-based quick setup, simple and efficient

Profitable & Efficient

- Innovative liquid cooling technology, extend battery life by 20%
- PV-ESS integrated, lower system cost
- AI dynamic MPPT, boosting power generation by 5%
- DC coupled solution, higher system efficiency

Smart & Manageable

- Three-phase wiring sequence adaptive, easy system wiring
- Support on&off grid switching, suitable for various application scenarios
- Real-time monitoring with OTA for online maintenance

Product Model	HYX-H50K-ET	HYX-H75K-ET	HYX-H99K9-ET
DC Input (PV)			
Max. Input Voltage		1,100V ¹	
Rated Input Voltage		650V	
Start-up Voltage		160V	
MPPT Operating Voltage Range		140V - 1,000V	
Max. Input Current per MPPT		40A	
Max. Input Current per String		20A	
Max. Short-circuit Current per MPPT		50A	
Number of MPPT	4	6	8
Number of Input	8	12	16
Max. Backfilling Current		0A	
DC Input (Battery)			
Rated Input Voltage		768V	
Battery Voltage Range		600V - 950V	
Max. Charge/Discharge Current	80.8A	121.3A	161.7A
AC Output			
AC Output Power	50kW	75kW	99.9kW
Max. Apparent Power	55kVA	82.5kVA	109.9kVA
Rated Output Voltage		220/380V , 230/400V , 3L/N/PE	
AC Grid Frequency		50 / 60Hz	
Rated Output Current	75.9A/380V 72.1A/400V	113.9A/380V 108.2A/400V	151.9A/380V 144.3A/400V
Max. Output Current	83.5A/380V 79.4A/400V	125.3A/380V 119.0A/400V	167.1A/380V 158.7A/400V
Adjustable Power Factor		> 0.99 / 0.8 leading...0.8 lagging	
Three Phase Unbalanced Output		100% Unbalanced Output	
THDi		< 3%	
Efficiency			
Max. Efficiency		98.5%	
European Weighted Efficiency		98.0%	
MPPT Efficiency		99.9%	
Protection			
Active Anti-islanding Protection		Yes	
Residual Current Monitoring		Yes	
DC Reverse Polarity Protection		Yes	
DC Switch		Yes	
DC Overvoltage Protection		Yes	
DC Overcurrent Protection		Yes	
AC Overfrequency/Underfrequency Protection		Yes	
AC Short-Circuit Protection		Yes	
AC Overvoltage Protection		Yes	
AC Overcurrent Protection		Yes	
DC Surge Protection		Type II	
AC Surge Protection		Type II	
Ground Fault Detection		Yes	
AFCI		Optional	
PID Recovery		Optional	
General Data			
Operating Temperature Range		-30 to + 60°C	
Relative Operating Humidity		0 - 100% RH	
Max. Operating Altitude		4,000m	
Cooling		Smart Air Cooling	
Display		LED+APP	
Communication		RS485 / 4G / WIFI / HPLC	
Weight		95kg	
Dimensions (W*H*D)		880*760*340mm	
Topology		Non-Isolated	
Degree of Protection		IP66	

1: When connected to the battery cabinet, the maximum PV input voltage is 650V.

Hybrid ESS Cabinet **Inverter**

Technical Specifications

Product Model	HYX-H100K-ET		HYX-H110K-ET	HYX-H125K-ET
DC Input (PV)				
Max. Input Voltage			1,100V ¹	
Rated Input Voltage			650V	
Start-up Voltage			160V	
MPPT Operating Voltage Range			140V - 1,000V	
Max. Input Current per MPPT			40A	
Max. Input Current per String			20A	
Max. Short-circuit Current per MPPT			50A	
Number of MPPT			8	
Number of Input			16	
Max. Backfilling Current			0A	
DC Input (Battery)				
Rated Input Voltage			768V	
Battery Voltage Range			600V - 950V	
Max. Charge/Discharge Current	161.7A		177.9A	183.8A
AC Output				
AC Output Power	100kW		110kW	125kW
Max. Apparent Power	110kVA		121kVA	125kVA
Rated Output Voltage			220/380V , 230/400V , 3L/N/PE	
AC Grid Frequency			50 / 60Hz	
Rated Output Current	151.9A/380V 144.3A/400V		167.1A/380V 158.7A/400V	189.9A/380V 180.4A/400V
Max. Output Current	167.1A/380V 158.7A/400V		183.8A/380V 174.6A/400V	189.9A/380V 180.4A/400V
Adjustable Power Factor			> 0.99 / 0.8 leading...0.8 lagging	
Three Phase Unbalanced Output			100% Unbalanced Output	
THDi			< 3%	
Efficiency				
Max. Efficiency			98.5%	
European Weighted Efficiency			98.0%	
MPPT Efficiency			99.9%	
Protection				
Active Anti-islanding Protection			Yes	
Residual Current Monitoring			Yes	
DC Reverse Polarity Protection			Yes	
DC Switch			Yes	
DC Overvoltage Protection			Yes	
DC Overcurrent Protection			Yes	
AC Overfrequency/Underfrequency Protection			Yes	
AC Short-Circuit Protection			Yes	
AC Overvoltage Protection			Yes	
AC Overcurrent Protection			Yes	
DC Surge Protection			Type II	
AC Surge Protection			Type II	
Ground Fault Detection			Yes	
AFCI			Optional	
PID Recovery			Optional	
General Data				
Operating Temperature Range			-30 to + 60°C	
Relative Operating Humidity			0 - 100% RH	
Max. Operating Altitude			4,000m	
Cooling			Smart Air Cooling	
Display			LED+APP	
Communication			RS485 / 4G / WIFI / HPLC	
Weight			95kg	
Dimensions (W*H*D)			880*760*340mm	
Topology			Non-Isolated	
Degree of Protection			IP66	

1: When connected to the battery cabinet, the maximum PV input voltage is 650V.

Preliminary

Hybrid ESS Cabinet **Battery**

Technical Specifications

Product Model	HYX-BOA215
Technical Parameter	
Battery Type	LiFePO4
Battery Module Capacity	14.336kWh
Battery Module Nominal Voltage	51.2V
Battery Module Qty In Series	15
System Nominal Voltage	768V
System Operating Voltage	672V - 864V
System Capacity	215kWh
Charge/Discharge Current	Recommend: 140A / Maximum: 170A (60s)
Calendar Life	≥6000 (25±2°C, 0.5C / 0.5C, 70%EOL)
General Parameter	
Operating Temperature Range	Charge: 0 to +55°C / Discharge: -20 to +55°C
Operating Humidity Range	0 - 95% RH
Max. Operating Altitude	≤2000m
Cooling Method	Smart Air Cooling
Protection Degree	IP54
Dimensions (W*H*D)	1440*2200*1170mm
Weight	2700kg
Communication	CAN
Installation Location	Outdoor
Fire Protection Method	Aerosol Fire Suppression
Networking Mode	WIFI / LAN

Preliminary

AIR COOLING ESS

HYX-EF215P2

HYX-EF215P2-S



Extreme Performance, More Grid Friendly

- Supports 8 units parallel on grid, system can cover 100kW/215kWh~800kW/1.72MWh
- Single unit supports seamless switching, off-grid switching time ≤ 20ms
- Three-phase four-bridge arm architecture supports single-phase 100% unbalanced load function
- PCS supports high and low penetration, island, and black start, support reactive power compensation, harmonic treatment

Safety & Reliable Performance

- Multi-level fire protection system
- Battery compartment and electrical compartment are isolated
- Certification: UN38.3, CE, IEC62619, 1.2m drop test, IEC 62477, IEC 61000

Multi-strategy Applications

- Integration of EMS inside
- Support peak shaving and valley filling, demand control, emergency backup power supply and other power consumption strategies
- Support MQTT protocol and IEC104 protocol, can participate in peak and frequency modulation

Easy to Install & Maintain

- Pre-installation and pre-test are available at the factory, Quick on-site construction wiring installation
- Support hoisting/fork construction methods
- Modular design, maintenance worry-free
- Remote O&M management, support WEB, Cloud & APP

HYX-EF215P2
HYX-EF215P2-S

Technical Specifications

Product Model	HYX-EF215P2		HYX-EF215P2-S
Battery Rating			
Battery Type			LiFePO4
Cell Capacity			280Ah
Battery Configuration			1P240S
Nominal Voltage/Voltage Range			768/672-864V
Nominal Capacity			215kWh
Maximum Charge/Discharge Current			280A
Nominal Charge/Discharge Current			140A
Calendar Life			6,000 / 70%EOL (25±2°C, 0.5P)
AC Grid Rating			
Nominal Input/Output Voltage			3L/N/PE, 400/230V
Nominal Frequency			50/60Hz
Nominal Input/Output Power			100kW
Max. Input/Output Apparent Power			110kVA
Nominal Input/Output AC Current			145A
Max. Input/Output AC Current			160A
Power Factor			-0.99% ~ +0.99%, At nominal power
AC Backup Rating			
Nominal Voltage	/	3L/N/PE, 400/230V	
Nominal Frequency	/	50/60Hz (-2.5 to +2.5Hz)	
Max. Output AC Current	/	160A	
Max. Active Power	/	100kW	
Power Factor	/	-0.99% ~ +0.99%, At nominal Power	
General Data			
System Parallel Units			8
Operating Temperature Range			-20 to 50°C
Operating Humidity Range			0 - 95%RH
Noise			≤ 75dB
Dimensions (W*H*D)			1730*2200*1170mm
Weight			3000kg
Protection Degree			IP54
Cooling Method			Air Cooling
Fire Protection Method			Aerosol Fire Suppression
Max. Operating Altitude			≤ 2,000m
Networking Mode			WIFI / LAN / 4G(Optional)

AIR COOLING ESS

HYX-EF215P2-M

HYX-EF215P2-MS



Ultimate Performance, Light Storage Fusion

- Integrated photovoltaic input function
- Supports 8 units parallel on grid, system can cover 100kW/215kWh~800kW/1.72MWh
- Supports 4 units parallel off grid, system can cover 100kW/215kWh~400kW/860kWh
- Single unit supports seamless switching, off-grid switching time ≤ 20ms
- Three-phase four-bridge arm architecture supports single-phase 100% unbalanced load function
- Support pure grid connection, pure off-grid, and combined operation

Safety & Reliable Performance

- Multi-level fire protection system
- Battery compartment and electrical compartment are isolated
- Certification: UN38.3, CE, IEC62619, 1.2m drop test, IEC 62477, IEC 61000

Multi-strategy Applications

- Integration of EMS inside
- Support peak shaving and valley filling, demand control, emergency backup power supply and other power consumption strategies
- Support MQTT protocol and IEC104 protocol, can participate in peak and frequency modulation

Easy to Install & Maintain

- Pre-installation and pre-test are available at the factory, Quick on-site construction wiring installation
- Support hoisting/fork construction methods
- Modular design, maintenance worry-free
- Remote O&M management, support WEB, Cloud & APP

Product Model	HYX-EF215P2-M	HYX-EF215P2-MS
Battery Rating		
Battery Type	LiFePO4	
Cell Capacity	280Ah	
Battery Configuration	1P240S	
Nominal Voltage/Voltage Range	768/672-864V	
Nominal Capacity	215kWh	
Maximum Charge/Discharge Current	280A	
Nominal Charge/Discharge Current	140A	
Calendar Life	6,000 / 70%EOL (25±2°C, 0.5P)	
PV Rating		
Maximum Input Voltage	900V	
MPPT Voltage Range	310-650V	
Max. Input Current Per MPPT Channel	165A	
Isc Current Per MPPT Channel	1800A	
MPPT Channels	2	
Rated Power Per MPPT Channel	50kW	
AC Grid Rating		
Nominal Input/Output Voltage	3L/N/PE, 400/230V	
Nominal Frequency	50/60Hz	
Nominal Input/Output Power	100kW	
Max. Input/Output Apparent Power	110kVA	
Nominal Input/Output AC Current	145A	
Max. Input/Output AC Current	160A	
Power Factor	-0.99% ~ +0.99%, At nominal power	
AC Backup Rating		
Nominal Voltage	/	3L/N/PE, 400/230V
Nominal Frequency	/	50/60Hz (-2.5 to +2.5Hz)
Max. Output AC Current	/	160A
Max. Active Power	/	100kW
Power Factor	/	-0.99% ~ +0.99%, At nominal Power
General Data		
System Parallel Units	8 (On-grid), 4 (Off-grid)	
Operating Temperature Range	-20 to 50°C	
Operating Humidity Range	0 - 95%RH	
Noise	≤ 75dB	
Dimensions (W*H*D)	1730*2200*1170mm	
Weight	3000kg	
Protection Degree	IP54	
Cooling Method	Air Cooling	
Fire Protection Method	Aerosol Fire Suppression	
Max. Operating Altitude	≤ 2,000m	
Networking Mode	WIFI / LAN / 4G(Optional)	

LIQUID COOLING ESS

HYX-EL372P2-DC

HYX-EL418P2-DC



Ultimate Safety

- A+ grade cells with automotive-grade standards
- AI thermal balance, ≤2°C cells temperature difference
- AI diagnostics with triple fire protection for system safety

Intelligent and Efficient

- Supports multi-unit parallel networking
- Built-in communication for safety management and data access

Convenient and Flexible

- Plug-and-play, flexible, easy installation

Product Model	HYX-EL372P2-DC	HYX-EL418P2-DC
Battery Side		
Cell Capacity	280Ah	314Ah
Battery Configuration	1P260S	
Nominal Voltage	1,331.2V	
Operating Voltage Range	1,164.8 - 1,497.6V	
Nominal Capacity	372.736kWh	417.997kWh
Supported Charge & Discharge Rate	≤ 0.5C	
Protection		
Overvoltage Protection	Yes	
Overcurrent Protection	Yes	
Short-circuit Protection	Yes	
Over-temperature Protection	Yes	
General Data		
Max. Efficiency	≥ 94% (Excluding self consumption)	
Operating Temperature Range	-20 to 50°C	
Operating Humidity Range	0 - 95%RH	
Noise	≤ 75dB	
Dimensions (W*H*D)	1420*2300*1350mm	
Weight	3,200kg	3,500kg
Protection Degree	IP55	
Cooling Method	Liquid Cooling	
Fire Protection Method	Perfluoro+Pack-level+Active Forewarning	
Max. Operating Altitude	≤ 2,000m	
Networking Mode	LAN	

STRING INVERTER

HYX-S29K9/30K/33K/ 36K/40K/50K-T



Safe & Reliable

- IP66, 1,400+ cumulative rigorous tests
- PV optimizers compatible, module-level shutdown
- Type II DC/AC surge protection, lightning-proof
- 300m AFCI detection with 0.5s rapid shutdown

Convenient & User-Friendly

- Compact and lightweight design, plug-and-play installation
- App-based quick setup
- Intelligent layout with rapid module-level visualization

Profitable & Efficient

- 40A design, dynamic MPPT efficiency of 99.9%
- Built-in PID repair, improving overall system performance
- AI dynamic MPPT, boosting power generation by 5%

Smart & Manageable

- Module-level monitoring for precise fault positioning
- Intelligent IV diagnostics for precise fault identification
- Real-time monitoring with OTA for online maintenance

HYX-S29K9/30K/33K/36K/40K/50K-T

Technical Specifications

Product Model	HYX-S29K9-T	HYX-S30K-T	HYX-S33K-T	HYX-S36K-T	HYX-S40K-T	HYX-S50K-T
PV Input						
Max. Input Power	48kW	48kW	52.8kW	57.6kW	64kW	80kW
Max. Input Voltage	1,100V					
Nominal Input Voltage	600V					
Start-up Voltage	160V					
MPPT Operating Voltage Range	140 - 1,000V					
MPPT Full Load Voltage Range	450 - 850V					
Max. Input Current Per MPPT	40A					
Max. Input Current Per String	20A					
Max. Short-Circuit Current	50A					
Number of MPPT	3				4	
Max. Input Number Per MPPT	2 / 2 / 2				2 / 2 / 2 / 2	
AC Output						
Nominal Output Power	29.9kW	30kW	33kW	36kW	40kW	50kW
Max. Apparent Power	29.9kVA	33kVA	36.3kVA	39.6kVA	44kVA	55kVA
Nominal Output Voltage	3L / N / PE, 220 / 380V, 230 / 400V					
Nominal AC Grid Frequency	50 / 60Hz					
Nominal Output Current	45.4A, 380V 43.1A, 400V	45.6A / 380V 43.3A / 400V	50.2A / 380V 47.6A / 400V	54.7A / 380V 52A / 400V	60.8A / 380V 57.7A / 400V	76A / 380V 72.2A / 400V
Max. Output Current	45.4A, 380V 43.1A, 400V	50.2A / 380V 47.6A / 400V	55.2A / 380V 52.4A / 400V	60.2A / 380V 57.2A / 400V	66.9A / 380V 63.5A / 400V	83.6A / 380V 79.4A / 400V
Adjustable Power Factor	0.8 leading...0.8 lagging					
THDi	< 3%					
Efficiency						
Max. Efficiency	98.6%					
European Weighted Efficiency	98.1%					
MPPT Efficiency	99.9%					
Protection						
Active Anti-islanding Protection	Yes					
Residual Current Monitoring	Yes					
DC Reverse Polarity Protection	Yes					
DC Switch	Yes					
AC Short-circuit Protection	Yes					
AC Overvoltage Protection	Yes					
AC Overcurrent Protection	Yes					
DC Surge Protection	Type II					
AC Surge Protection	Type II					
Ground Fault Detection	Yes					
AFCI	Optional					
PID recovery	Optional					
General Data						
Operating Temperature Range	-30 to + 60°C					
Relative Operating Humidity	0 - 100 %RH					
Operating Altitude	4,000m					
Cooling	Smart Air Cooling					
Display	LED/ WLAN+App					
Communication	RS485 / 4G / WIFI / HPLC					
Weight	44kg					
Dimensions (W*H*D)	615*460*268.5mm					
Topology	Non-Isolated					
Degree of Protection	IP66					
Overvoltage Level	PV II / AC III					

HYBRID INVERTER

HYX-H50K/75K/80K/ 99K9/100K/110K/125K-ET



Safe & Reliable

- Type II DC/AC surge protection, lightning-proof
- 300m AFCI detection with 0.5s rapid shutdown
- IP66, 1400+ cumulative rigorous tests

Convenient & User-Friendly

- Compact and lightweight, plug-and-play
- App-based quick setup, simple and efficient

Profitable & Efficient

- 40A input per MPPT
- Built-in PID repair, improving overall system performance
- AI dynamic MPPT, boosting power generation by 5%
- DC coupled solution, higher system efficiency
- PV-ESS integrated, lower system cost

Smart & Manageable

- Three-phase wiring sequence adaptive, easy system wiring
- Intelligent IV diagnostics for precise fault identification
- Real-time monitoring with OTA for online maintenance

Technical Specifications

Product Model	HYX-H50K-ET		HYX-H75K-ET	HYX-H80K-ET
DC Input (PV)				
Max. Input Voltage			1,100V ¹	
Rated Input Voltage			650V	
Start-up Voltage			160V	
MPPT Operating Voltage Range			140V - 1,000V	
Max. Input Current per MPPT			40A	
Max. Input Current per String			20A	
Max. Short-circuit Current per MPPT			50A	
Number of MPPT	4		6	6
Number of Strings Per MPPT			2	
Max. Backfilling Current			0A	
DC Input (Battery)				
Rated Input Voltage			768V	
Battery Voltage Range			600V - 950V	
Max. Charge/Discharge Current	80.8A		121.3A	129.3A
AC Output				
AC Output Power	50kW		75kW	80kW
Max. Apparent Power	55kVA		82.5kVA	88kVA
Rated Output Voltage			220/380V, 230/400V, 3L/N/PE	
AC Grid Frequency			50 / 60Hz	
Rated Output Current	75.9A/380V 72.1A/400V		113.9A/380V 108.2A/400V	121.5A/380V 115.5A/400V
Max. Output Current	83.5A/380V 79.4A/400V		125.3A/380V 119.0A/400V	133.7A/380V 127A/400V
Adjustable Power Factor			> 0.99 / 0.8 leading...0.8 lagging	
Three Phase Unbalanced Output			100% Unbalanced Output	
THDi			< 3%	
Efficiency				
Max. Efficiency			98.5%	
European Weighted Efficiency			98.0%	
MPPT Efficiency			99.9%	
Protection				
Active Anti-islanding Protection			Yes	
Residual Current Monitoring			Yes	
DC Reverse Polarity Protection			Yes	
DC Switch			Yes	
AC Short-Circuit Protection			Yes	
AC Overvoltage Protection			Yes	
AC Overcurrent Protection			Yes	
DC Surge Protection			Type II	
AC Surge Protection			Type II	
AFCI			Optional	
PID Recovery			Optional	
General Data				
Operating Temperature Range			-30 to + 60°C	
Relative Operating Humidity			0 ~ 100 %RH	
Operating Altitude			4,000m	
Cooling			Smart Air Cooling	
Display			LED+APP	
Communication			RS485 / 4G / WIFI / HPLC	
Weight			95kg	
Dimensions (W*H*D)			880*760*340mm	
Topology			Non-Isolated	
Degree of Protection			IP66	

1: When connected to the battery cabinet, the maximum PV input voltage is 650V.

Technical Specifications

Product Model	HYX-H99K9-ET		HYX-H100K-ET	
DC Input (PV)				
Max. Input Voltage			1,100V ¹	
Rated Input Voltage			650V	
Start-up Voltage			160V	
MPPT Operating Voltage Range			140V - 1,000V	
Max. Input Current per MPPT			40A	
Max. Input Current per String			20A	
Max. Short-circuit Current per MPPT			50A	
Number of MPPT	8		8	
Number of Strings Per MPPT			2	
Max. Backfilling Current			0A	
DC Input (Battery)				
Rated Input Voltage			768V	
Battery Voltage Range			600V - 950V	
Max. Charge/Discharge Current	161.7A		161.7A	
AC Output				
AC Output Power	999kW		100kW	
Max. Apparent Power	1099kVA		110kVA	
Rated Output Voltage			220/380V, 230/400V, 3L/N/PE	
AC Grid Frequency			50 / 60Hz	
Rated Output Current	151.9A/380V 144.3A/400V		151.9A/380V 144.3A/400V	
Max. Output Current	1671A/380V 158.7A/400V		1671A/380V 158.7A/400V	
Adjustable Power Factor			> 0.99 / 0.8 leading...0.8 lagging	
Three Phase Unbalanced Output			100% Unbalanced Output	
THDi			< 3%	
Efficiency				
Max. Efficiency			98.5%	
European Weighted Efficiency			98.0%	
MPPT Efficiency			99.9%	
Protection				
Active Anti-islanding Protection			Yes	
Residual Current Monitoring			Yes	
DC Reverse Polarity Protection			Yes	
DC Switch			Yes	
AC Short-Circuit Protection			Yes	
AC Overvoltage Protection			Yes	
AC Overcurrent Protection			Yes	
DC Surge Protection			Type II	
AC Surge Protection			Type II	
AFCI			Optional	
PID Recovery			Optional	
General Data				
Operating Temperature Range			-30 to + 60°C	
Relative Operating Humidity			0 ~ 100 %RH	
Operating Altitude			4,000m	
Cooling			Smart Air Cooling	
Display			LED+APP	
Communication			RS485 / 4G / WIFI / HPLC	
Weight			95kg	
Dimensions (W*H*D)			880*760*340mm	
Topology			Non-Isolated	
Degree of Protection			IP66	

1: When connected to the battery cabinet, the maximum PV input voltage is 650V.

Technical Specifications

Product Model	HYX-H110K-ET		HYX-H125K-ET	
DC Input (PV)				
Max. Input Voltage			1,100V ¹	
Rated Input Voltage			650V	
Start-up Voltage			160V	
MPPT Operating Voltage Range			140V - 1,000V	
Max. Input Current per MPPT			40A	
Max. Input Current per String			20A	
Max. Short-circuit Current per MPPT			50A	
Number of MPPT	8		8	
Number of Strings Per MPPT			2	
Max. Backfilling Current			0A	
DC Input (Battery)				
Rated Input Voltage			768V	
Battery Voltage Range			600V - 950V	
Max. Charge/Discharge Current	177.9A		183.8A	
AC Output				
AC Output Power	110kW		125kW	
Max. Apparent Power	121kVA		125kVA	
Rated Output Voltage	220/380V , 230/400V , 3L/N/PE			
AC Grid Frequency	50 / 60Hz			
Rated Output Current	1671A/380V 158.7A/400V		189.9A/380V 180.4A/400V	
Max. Output Current	183.8A/380V 174.6A/400V		189.9A/380V 180.4A/400V	
Adjustable Power Factor	> 0.99 / 0.8 leading...0.8 lagging			
Three Phase Unbalanced Output	100% Unbalanced Output			
THDi	< 3%			
Efficiency				
Max. Efficiency			98.5%	
European Weighted Efficiency			98.0%	
MPPT Efficiency			99.9%	
Protection				
Active Anti-islanding Protection			Yes	
Residual Current Monitoring			Yes	
DC Reverse Polarity Protection			Yes	
DC Switch			Yes	
AC Short-Circuit Protection			Yes	
AC Overvoltage Protection			Yes	
AC Overcurrent Protection			Yes	
DC Surge Protection			Type II	
AC Surge Protection			Type II	
AFCI			Optional	
PID Recovery			Optional	
General Data				
Operating Temperature Range			-30 to + 60°C	
Relative Operating Humidity			0 ~ 100 %RH	
Operating Altitude			4,000m	
Cooling			Smart Air Cooling	
Display			LED+APP	
Communication			RS485 / 4G / WIFI / HPLC	
Weight			95kg	
Dimensions (W*H*D)			880*760*340mm	
Topology			Non-Isolated	
Degree of Protection			IP66	

1: When connected to the battery cabinet, the maximum PV input voltage is 650V.



Utility PV and ESS Solution

Overview

HYXiPOWER Utility PV and ESS Solution incorporates advanced design to enhance output power and conversion efficiency, reducing switching losses and utilizing AI-driven dynamic MPPT to boost power generation. The system ensures ultimate reliability with temperature monitoring, overheat protection, and smart string disconnection for fast shutdown, all while undergoing rigorous testing for durability.

It supports grid-friendly power quality with low harmonic distortion, and smart management enables fault detection accuracy, real-time monitoring, and remote maintenance support. Safety is prioritized through multi-layer electrical protection, AI thermal balance, and flame-retardant features, while precision monitoring ensures early warning and fire response.

Highlight



Ultimate Safety

- Multi-layer electrical protection from cells to system
- Terminal temperature monitoring with overheat protection



Grid-Friendly

- Full power feed in grid at $SCR < 1.2$
- THDi $< 1\%$ for improved power quality



Highly Profitable

- 75A design for higher output power
- AI dynamic MPPT, boosting power generation by 5%



Efficient Management

- Real-time monitoring with OTA for online maintenance
- Intelligent IV curve scanning with 99% fault detection accuracy

STRING INVERTER

HYX-S350K-HT



Highly Profitable

- 75A design for higher output power
- 14% less switching loss, 99.03% conversion efficiency
- AI dynamic MPPT, boosting power generation by 5%

Ultimately Reliable

- Terminal temperature monitoring with overheat protection
- Smart string disconnection, <25ms fast shutdown
- IP66, 1400+ cumulative rigorous tests

Grid-Friendly

- Full power feed in grid at SCR<1.2
- THDi <3% for improved power quality

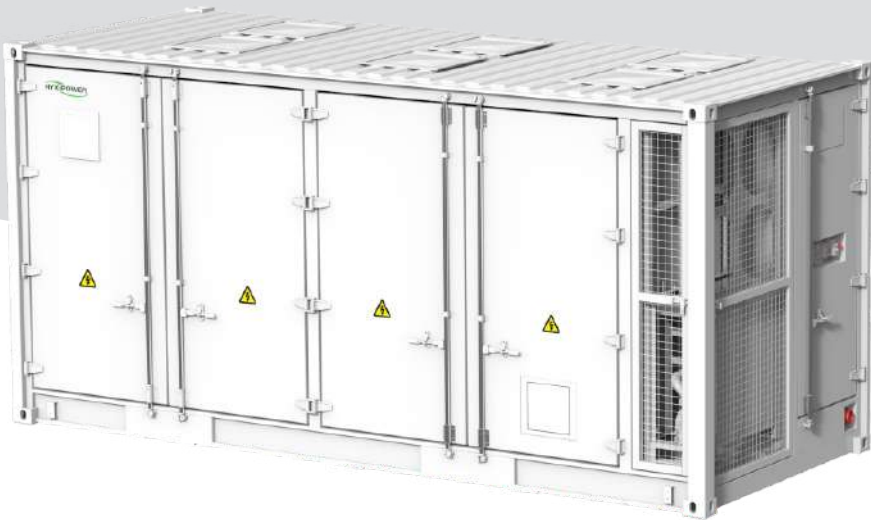
Smart & Manageable

- Intelligent IV curve scanning with 99% fault detection accuracy
- Real-time monitoring with OTA for online maintenance

Technical Specifications

Product Model	HYX-S350K-HT
PV Input	
Max. Input Voltage	1,500V
Nominal Input Voltage	1,080V
Start-up Voltage	500V
MPPT Operating Voltage Range	480 - 1,500V
Max. Input Current Per MPPT	75A
Max. Short-Circuit Current	120A
Number of MPP Trackers	6
Max. Input Number Per MPP Tracker	30 (Optional: 24)
AC Output	
Max. Output Power	352kW
Max. Apparent Power	352kVA
Nominal Output Voltage	3L / PE, 800V
Nominal AC Grid Frequency	50Hz / 60Hz
Nominal Output Current	230.9A
Max. Output Current	254A
Adjustable Power Factor	>0.99 (0.8 leading...0.8 lagging)
THDi	< 3%
Efficiency	
Max. Efficiency	≥99.03%
European Weighted Efficiency	≥98.8%
MPPT Efficiency	99.9%
Protection	
Active Anti-islanding Protection	Yes
Residual Current Monitoring	Yes
DC Reverse Polarity Protection	Yes
DC Switch	Yes
AC Short-Circuit Protection	Yes
AC Overvoltage Protection	Yes
AC Overcurrent Protection	Yes
DC Surge Protection	Type II
AC Surge Protection	Type II
Ground Fault Detection	Yes
Smart String-level Disconnection	Yes
Smart Connector-level Detection	Yes
General Data	
Operating Temperature Range	-35 to + 60°C
Relative Operating Humidity	0 - 100 %RH
Operating Altitude	5,000m
Cooling	Smart Air Cooling
Display	LED / WLAN+App
Communication	RS485 / HPLC
Weight	130kg
Dimensions (W*H*D)	1120*820*380mm
Topology	Non-Isolated
Degree of Protection	IP66
Overvoltage Level	PV II / AC III

CONTAINER ESS
HYX-EL3000/4000/
5000P2-DC



Ultimate Safety

- Multi-layer electrical protection from cells to system
- Six-sided flame retardant, triple fire protection design
- Precision monitoring system with early warning and fire response

Efficient Management

- System round-trip efficiency (RTE) ≥90%
- A+ grade cells with automotive-grade standards
- Energy-efficient iEMS with multi-site cloud management
- AI cells fault prediction for enhanced safety

Product Model	HYX-EL3000P2-DC	HYX-EL4000P2-DC	HYX-EL5000P2-DC
Battery Side			
Cell Capacity		314Ah LFP	
Battery Configuration	8P416S	10P416S	12P416S
Nominal Voltage		1,331.2V	
Operating Voltage Range		1,164.8 ~ 1,497.6V	
Nominal Capacity	3.34MWh	4.18MWh	5.01MWh
Supported Charge & Discharge Rate		≤ 0.5C	
Protection			
Overvoltage Protection		Yes	
Overcurrent Protection		Yes	
Short-circuit Protection		Yes	
Over-temperature Protection		Yes	
Emergency Stop Protection		Yes	
General Data			
Max. Efficiency		≥90% (include self-consumption)	
Operation Ambient Temperature Range		-30 to 55 °C	
Storage Temperature		-20 to 35 °C	
Operating Humidity Range		0 ~ 95%RH	
Noise		≤ 80dB	
Anti-corrosion Degree		C3/C4/C5 (optional)	
Dimensions (W*H*D)	6,058*2,896*2,438mm	6,058*2,896*2,438mm	6,058*2,896*2,438mm
Weight	33T	38T	43T
Protection Degree		IP55	
Cooling Method		Liquid Cooling	
Fire Protection Method		Aerosol + water suppression system	
Max. Operating Altitude		≤ 2,000m	
Networking Mode		LAN、RS485、CAN	

Preliminary

HYXI DCS
HYX-DCS-4G
HYX-DCS-WL



Convenient & User-Friendly

- Up to 10 inverters connection
- Plug-and-play

Stable & Reliable

- Encrypted data transmission for security
- Supporting data recovery, preventing data loss

Smart & Manageable

- 4G, Wi-Fi and Ethernet communication capability
- On/off-site software updates, parameter configuration, and fault analysis

Product Model	HYX-DCS-4G	HYX-DCS-WL
General Data		
Max. Inverters Supported	10	
Data Acquisition Interval	5 mins	
Connection Interface	USB	
Ethernet Interface	/	10M/100M Ethernet
Installation	Plug-and-play	
Indicator	LED+App	
Dimensions (W*H*D)	122*41*33mm	144*41*33mm
Weight	64g	68g
Degree of Protection	IP66	
Power Consumption	2W	1W
Input Voltage	5V / 1A	
Wireless Parameter		
Wireless	4G:TDD-LTE, FDD-LTE 3G:SCDMA 2G:GSM/GPRS	WIFI:802.11b/g/n
Environment		
Operating Ambient Temperature	- 30 to +65℃	
Relative Humidity Range	0 ~ 100%RH , Non-condensing	
Storage Temperature Range	-40 to +70℃	

HYXI DMU
HYX-DMU-4G
HYX-DMU-W



Convenient & User-Friendly

- Plug-and-play

Stable & Reliable

- Encrypted data transmission for security
- Local storage with resume capability, ensuring no data loss

Smart & Manageable

- 4G, Wi-Fi, and Ethernet communication capability
- On/off-site software updates, parameter configuration, and fault analysis

Product Model	HYX-DMU-W	HYX-DMU-4G
Communication to Microinverter		
Signal	Sub-1G	
Monitoring Data Limit From Solar Panels	400	
Communication to Hyxi Cloud		
Ethernet	RJ45×1, 100Mb/s	
Wireless	WIFI:802.11b/g/n	4G:TDD-LTE, FDD-LTE 3G:SCDMA 2G:GSM/GPRS
Data Acquisition Interval	5 min	
Power Supply (Adapter)		
Type	External adapter	
Adapter Input Voltage / Frequency	100 - 240V AC / 50 - 60Hz	
Adapter Output Voltage / Current	12V / 1A	
Power Consumption	1.5W	2.5W
General Data		
Operating Ambient Temperature	- 20 to +65℃	
Dimensions (W*H*D)	106*216*79mm (with base)	
Weight	320g	
Cooling	Natural Cooling	
Degree of Protection	IP20	
Installation Method	Desktop mounting / Wall mounting	

SMART PV OPTIMIZER

HYX-OP400/500/600/700

HYX-OP1100/1300



Efficient

- 25A high-current design, up to 1300W output
- Compatible with bifacial PV modules, 182mm and 210mm high-power PV modules

Simple

- Snap-fit quick installation

Reliable



- Module-level shutdown for enhanced safety

Intelligent

- Module-level monitoring for precise fault positioning

HYX-OP400/500/600/700
HYX-OP1100/1300

Technical Specifications

Product Model	HYX-OP400	HYX-OP500	HYX-OP600	HYX-OP700	HYX-OP1100	HYX-OP1300
Appearance						
Input						
Rated Input DC Power	400W	500W	600W	700W	1,100W	1,300W
Absolute Max. Input Voltage	80V				125V	
MPPT Operating Voltage Range	10 ~ 80V				12.5 ~ 105V	
Max. Short Circuit Current (Isc)	25A				25A	
MPPT Efficiency	99.5%				99.5%	
Weighted Efficiency	99.0%				99.0%	
Overvoltage Category	II				II	
Output						
Max. Output Voltage	80V				80V	
Max. Output Current	20A				22A	
Output Bypass	Yes				Yes	
Shutdown Output Voltage Per Optimizer	1V				1V	
Communication						
Communication Method	PLC				PLC	
General Data						
Dimension (W*H*D)	92*148.5*25mm				96.4*148.5*48mm	
Weight (including cables)	850g				1300g	
Input/Output Connector	Staubli MC4				Staubli MC4	
Input Wire Length	150mm				150mm	
Output Wire Length	1300mm				(+)5100mm, (-)150mm	
Operating Temperature Range	-40 to +85°C				-40 to +85°C	
Relative Humidity	0 - 100 %RH				0 - 100 %RH	
Degree of Protection	IP68				IP68	
Installation Part	Frame Mounting Bracket / T-shaped Bolt				Frame Mounting Bracket / T-shaped Bolt	

HYXi Logger



Convenient & User-Friendly

- Wall-mounted, rail-mouted, and drawer installation
- Built-in web interface with guided setup and one-click layout

Stable & Reliable

- TLS data transmission encryption for high security
- Dual-power redundancy ensuring system stability

Intelligent & Flexible

- Up to 150 inverters connection
- Compatible with multiple communication protocols

Product Model	HYXi Logger
Device Management	
Max. Inverters Supported	150
Communication Interface	
WAN	WAN x 2, 10 / 100 / 1,000 Mbps
LAN	LAN x 4, 10 / 100 / 1,000 Mbps
Optical Ethernet	SFP x 2, 100 / 1,000 Mbps
HPLC	PLC x 2, Max. Voltage 800V (±10%), 1,000 m
RS485	COM x 6
Analog Input	DI x 9 / DO x 4
Digital Input / Output	AI x 4
PT100 / PT1000	2
Active DO	x1, 12V, 0.1A
Communication Protocol	
Ethernet	Modbus-TCP, IEC 60870-5-104
RS485	Modbus-RTU, IEC 60870-5-103 (Standard), DL / T645
Power Supply	
AC Input Voltage/Frequency	100 ~ 277 Vac, 50 / 60 Hz
DC Output Voltage/Current	24Vdc, 1.25A
Power Consumption	Max. 18W
Interaction	
LED	LED x 4
Web	Embedded Web
USB	USB 3.0 x 2
General Data	
Operating Ambient Temperature	-35 to +60°C
Relative Humidity Range	5 ~ 95% RH
Degree of Protection	IP20
Operating Altitude	4000m
Dimensions (W*H*D)	60*380*240 mm (without mounting ears)
Weight	3kg
Installation Method	Wall Mounting, Rail Mounting, Tabletop Mounting

PV Array Controller Smart ECS



Convenient & User-Friendly

- Supports multiple protocols integration
- Compatible with devices with various protocols

Stable & Reliable

- IP65
- Industrial-grade design standards

Fast & Smart

- Embedded platform with one-click setup

Product Model	Smart ECS
Disposition	
Built-in Data Collector	HYXiLogger
RS485	Standard
HPLC	2
Built-in Switches	Optional, 2 Optical port, 6 Electrical port
Environmental Parameters	
Operating Temperature	-40 to +60°C
Operating Relative Humidity	0% ~ 100% RH
Maximum Working Altitude	5,000m
Electrical Parameters	
AC Input Voltage	100 V ~ 240 V, L / N (L)+ PE
HPLC AC Input Voltage	380 V ~ 800 V, 3Ph+FE
AC Input Frequency	50 / 60 Hz
Power Supply	24V DC power
Mechanical Parameters	
Inlet and Outlet	Down-in, down-out
Dimensions (W*H*D)	770*480*350mm
Weight	30kg
Ingress Protection	IP65
Installation	Brackets, poles, wall mounts

HYXiPOWER Smart Energy Platform



Ultimate Experience

- One-click cloud setup for seamless operation
- One-stop user view for more comprehensive data
- Scenario-oriented interface for precise information
- Multi-node, all-time-zone coverage for smoother access
- All-in-one user terminal, no more app switching

Ultimate Safety

- Comprehensive monitoring and proactive risk alerts
- Scalable cloud for stable millions of devices connectivity
- Robust IoT foundation to ensure cloud security

Efficient O&M

- Intelligent layout with rapid module-level visualization
- App/WEB sync, real-time control, multi-end operation
- Unified management, OTA updates, fast fault resolution
- Real-time data analysis for automated alerts

Comprehensive Intelligence

- 24/7 AI cells management for safety control
- One-click diagnostics for utility safety monitoring
- Intelligent IV diagnostics for precise fault positioning
- 24H intelligent TOU scheduling for maximum profit
- Power forecast for optimized energy scheduling
- Industry-specific model with integrated interaction

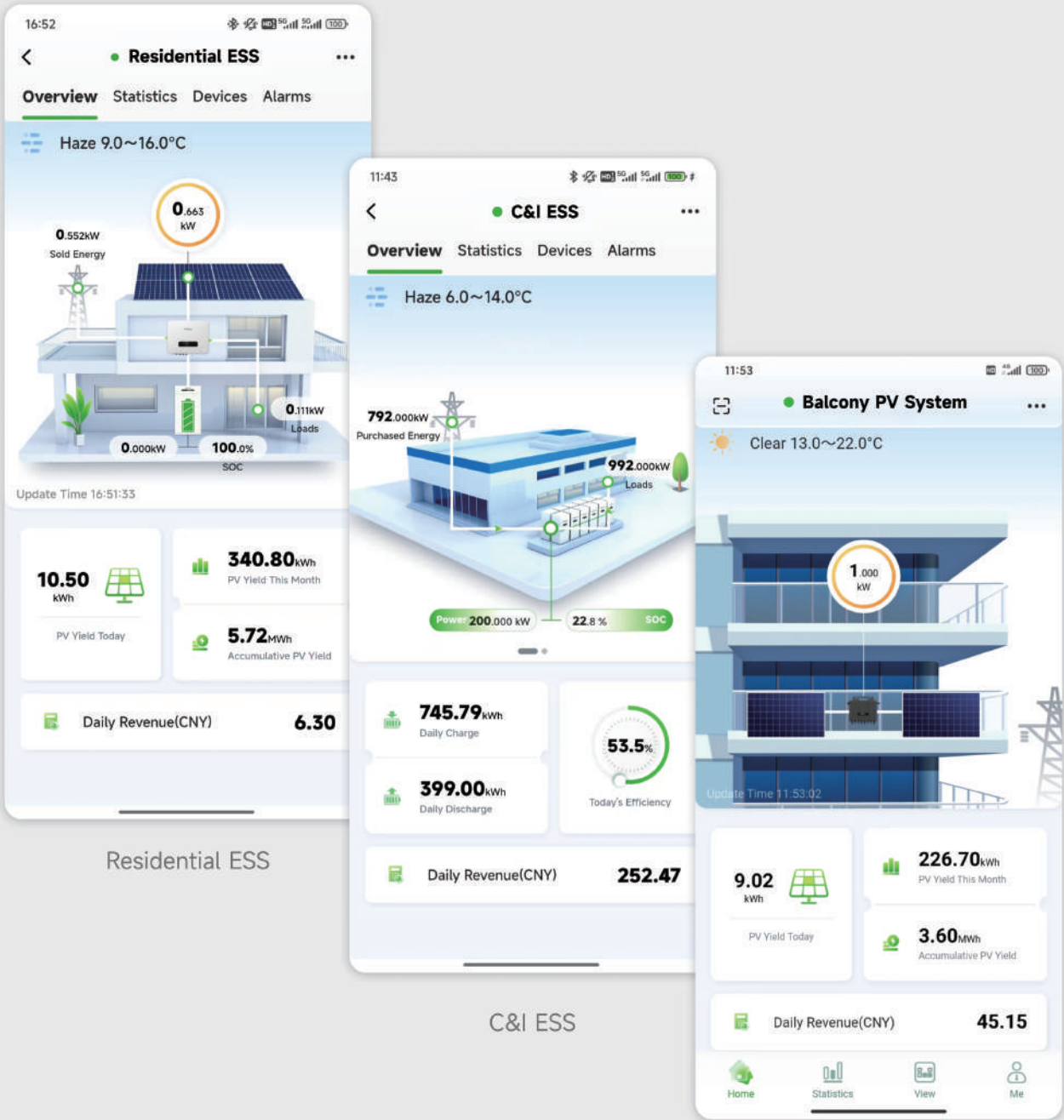
Open Ecosystem

- OpenAPI for platform-level cloud connectivity
- Customizable SaaS solution, empowering ecosystem partners
- Multi-mode virtual PV plant access for fast integration

- Multi-dimensional reports for efficient decision-making
- 24/7 intelligent sensing for 360° security
- Efficient smart control of heat pumps and generators

Scenario-Oriented Interface For Precise Information

Adapted for C&I ESS, Residential ESS, Balcony PV System, etc.



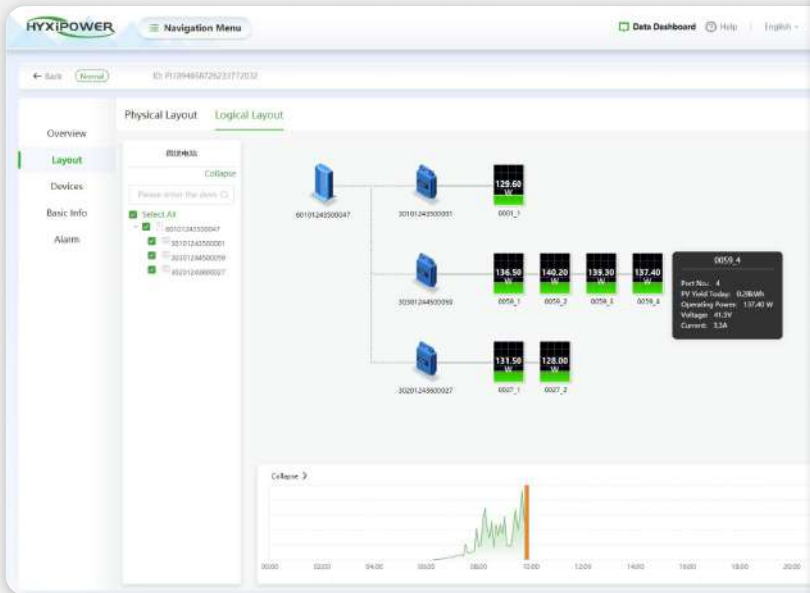
Residential ESS

C&I ESS

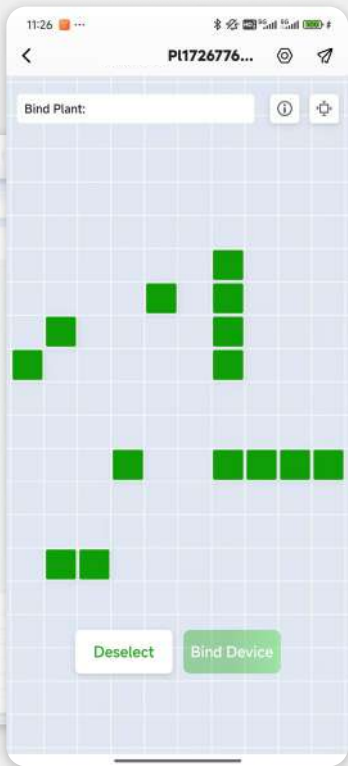
Balcony PV System

Smart PV Plant Layout → Modular Monitoring

Intelligent layout with rapid module-level visualization
One-stop user view with module-level operational monitoring



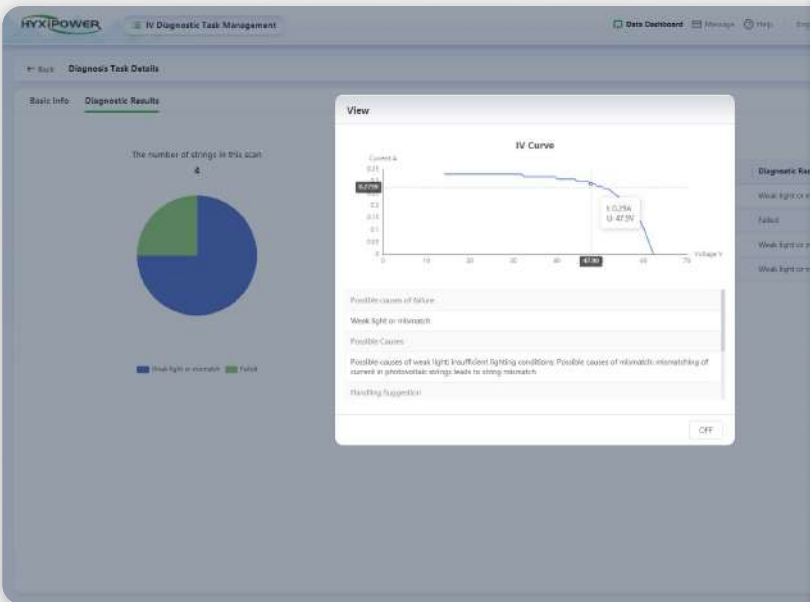
Smart PV Plant Layout



Smart PV Plant Layout

One-Click Diagnostics

For utility safety monitoring



IV Diagnostics



One-Click Diagnostics

AR Visualization Screen:

From "Overall View" to "Single-Plant Cockpit",
Key Data at a Glance



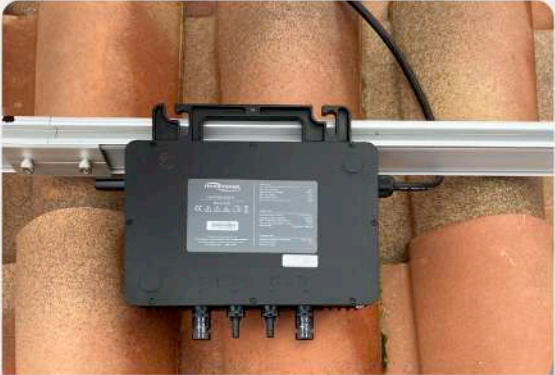
HYXiPOWER Energy Storage Monitoring Center



Energy Storage Cockpit

Projects and Cases

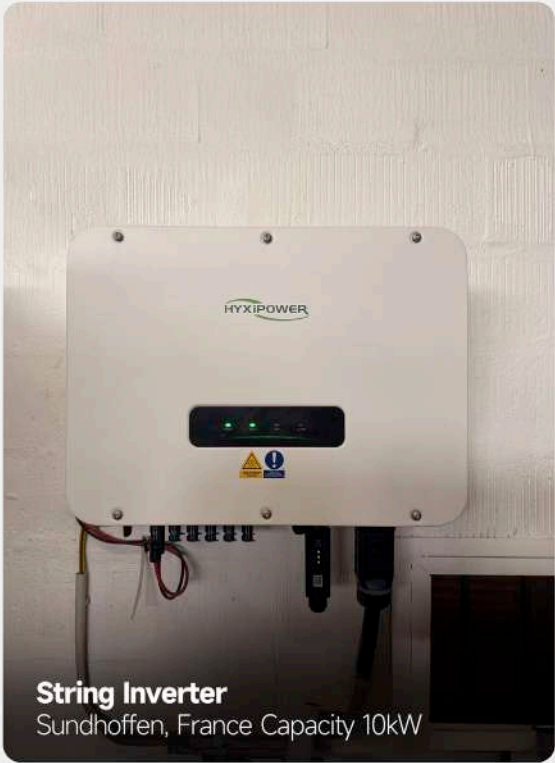
Residential Solution



Microinverter
Île-de-France, France Capacity 2.46kW



Microinverter
Beaulieu, France Capacity 4kW



String Inverter
Sundhoffen, France Capacity 10kW



Hybrid Inverter, High Voltage Battery
Rotterdam, Netherlands Capacity 10kW

Projects and Cases

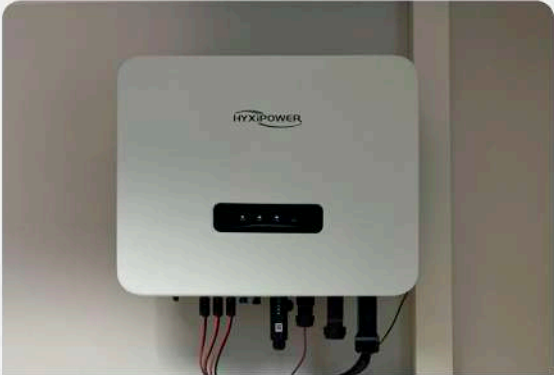
Residential Solution



Hybrid Inverter, High Voltage Battery
Barcelona, Spain Capacity 50kW



Hybrid Inverter, High Voltage Battery
Madrid, Spain Capacity 5.28kW



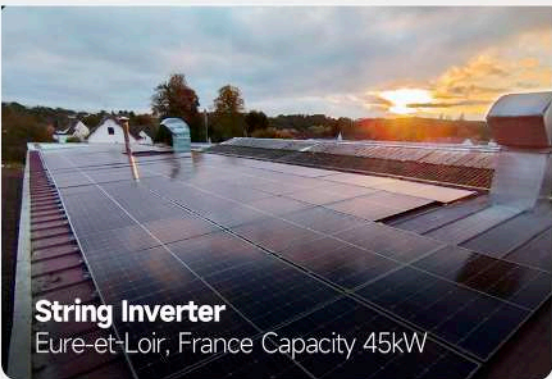
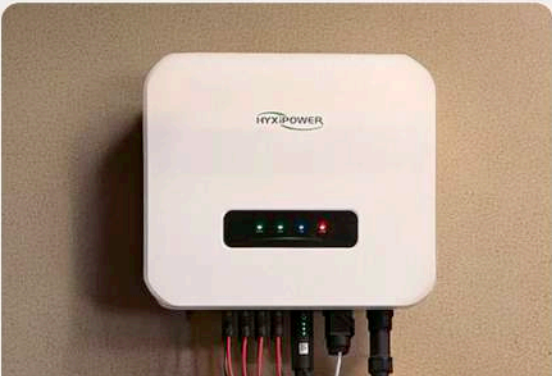
Hybrid Inverter
Barcelona, Spain Capacity 25kW



Hybrid Inverter
Barcelona, Spain Capacity 25kW

Projects and Cases

Residential Solution



String Inverter
Eure-et-Loir, France Capacity 45kW



Microinverter
Texas, USA Capacity 117kW



Hybrid Intervert
Brisbane, Australia Capacity 6.6kW



Hybrid Inverter High Voltage Battery
Rheinland-Pfalz, Germany Capacity 50kW

Projects and Cases

C&I PV and ESS Solution



5MWh Container ESS
Zhejiang, China Capacity 400MWh



5MWh Container ESS
Shandong, China Capacity 5MW/10MWh



50kW/110kW String Inverter
Zhejiang, China Capacity 4MWp



320kW String Inverter
Shandong, China Capacity 6MWp