



Zhejiang Hyxi Technology Co., Ltd.

Email: global.sales@hyxipower.com

Website: www.hyxipower.com



LinkedIn



Official Website



YouTube



Instagram



Facebook



Driving Excellence in Every Watt
HYXiPOWER Product Catalog

MY 2025V1.1



Contents

About HYXiPOWER	03 - 08
Residential String Inverter PV Solution	09 - 20
Microinverter Solution	21 - 32
Residential ESS Solution	33 - 54
C&I PV and ESS Solution	55 - 70
Utility PV and ESS Solution	71 - 82
Accessories and Smart Energy Platform	83 - 90
Projects and Cases	91 - 94

About HYXiPOWER

Shaping the Infinite Future Through the Power of Light



Our Core Value

Quality, Innovation, Efficiency, Win-Win

Our Mission

Enjoy Green Energy Globally

Our Vision

To Be the World-leading Provider of Smart Renewable Energy Solutions

Zhejiang Hysi Technology Co., Ltd. (referred to as "HYXiPOWER") is a high-tech enterprise specializing in smart PV & ESS, integrating R&D, manufacturing, sales, and services.

The company offers products such as photovoltaic inverters, energy storage systems, and smart energy platforms. Dedicated in providing leading renewable energy solutions for residential, C&I, and utility-scale applications, HYXiPOWER is deeply engaged in power electronic topology, core algorithms, thermal management, magnetics, EMC, BMS, EMS, AI, and smart energy platforms.

With over 70 core intellectual properties and more than 200 certifications received from global institutions such as TÜV Rheinland, CSA, Bureau Veritas, and SGS, HYXiPOWER operates 12 Global Technical Service Centers (GTAC) across six continents, promoting a greener, low-carbon and sustainable future in collaboration with global partners.

HYXiPOWER is committed to excellence through our "SUPER FIVE" concept

Super Service, Super Usability, Super Performance, Super ValuE, Super Reliability

It reflects our dedication to innovation and craftsmanship

Underpins our commitment to global sustainable energy development

Together, we pave the way to a greener, more sustainable world



SUPER FIVE

Driving Green Energy Innovation to Serve Global Customers



20+
Years R&D Experience

100+
Countries & Regions

24/7
Customer Support

70%
R&D Personnel

12
Global Technical Assistance Centers (GTACs)

200+
Local Professionals

70+
Core Intellectual Properties

14
Spare Parts Centers

1,000+
Service Partners

Top-Tier Manufacturing & Supply 40,000+ Square Meters of Excellence



Green Production Line
Hangzhou · China | Main Production Base



AI Driven Smart Production
Jinhua · China | Battery Factory

Intelligent O&M

Big Data Components

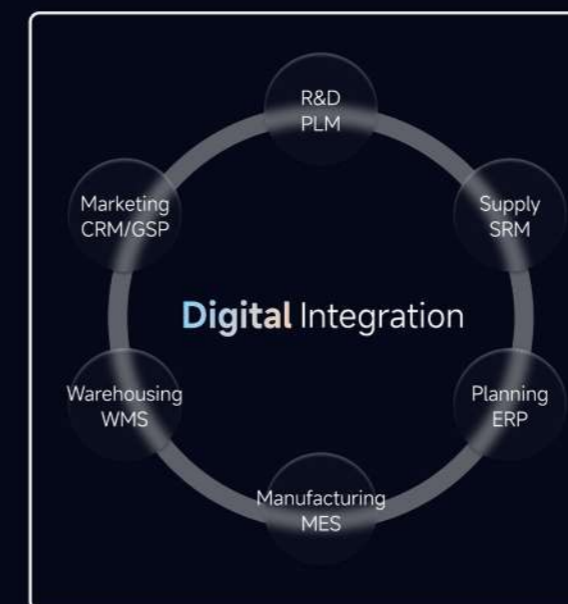
Analysis Models

BI Reports

KPI Achievement

Data Analysis

Data Processing



Automation

ATS

AGV

AOI

Automatic Gripping System

Automatic Aging System

IOT

Sensing & Control

HMI

Sensor Networks

Instruments And Meters

Label Recognition

.....

Safety and Quality Assured

300+ Advanced Experimental Capabilities

Committed for 25 Years of Reliability

Extreme Environment Test Ensures Durability in Various Conditions

82-Day

Residential ESS Product Environmental Reliability Load Test



Water Immersion Test



Freezing Test



Rainfall Test

22

Environmental Reliability Tests



EMC Test



High Temperature Test



Salt Spray Test

Precision Testing for Ultimate Reliability

Achieved through Comprehensive Quality Assurance

124,000+

Cumulative Electrical Reliability Tests

1,300

Grid Phase Angle Mutation Tests

9,125

Grid Overshoot Event Test

18,250

Voltage Fluctuation Test

9,000

Grid Disconnection Event Tests

1,300

Grid Voltage Sag Event Tests

200

Four-Phase Angle Surge Tests

2,300+

Performance & Extreme Condition Tests

500+

Key Performance Tests

Including stress testing, MPPT efficiency, anti-backflow, battery efficiency, voltage adaptability, etc., ensuring safe operation

1,700+

Extreme Condition Tests

Covering weak grid adaptation, harmonic anomalies, load compatibility, low-light simulation, battery emergency test etc., ensuring robust reliability



200+ Global Certifications

Recognized by TÜV Rheinland, CSA, Bureau Veritas, SGS, etc.




Residential PV Solution


Overview


HYXiPOWER Residential PV Solution enhances system reliability and power generation efficiency through a design where each module operates independently. Its flexible configuration adapts to various roof types, offering easy installation and suitability for different household scenarios. Combined with inverters and real-time monitoring, the system enables efficient energy management, optimizes power generation, reduces electricity costs, and helps users maximize self-consumption of green energy.

Highlight

-  **Ultimate Safety**
- Type II DC/AC surge protection
 - Optional AFCI

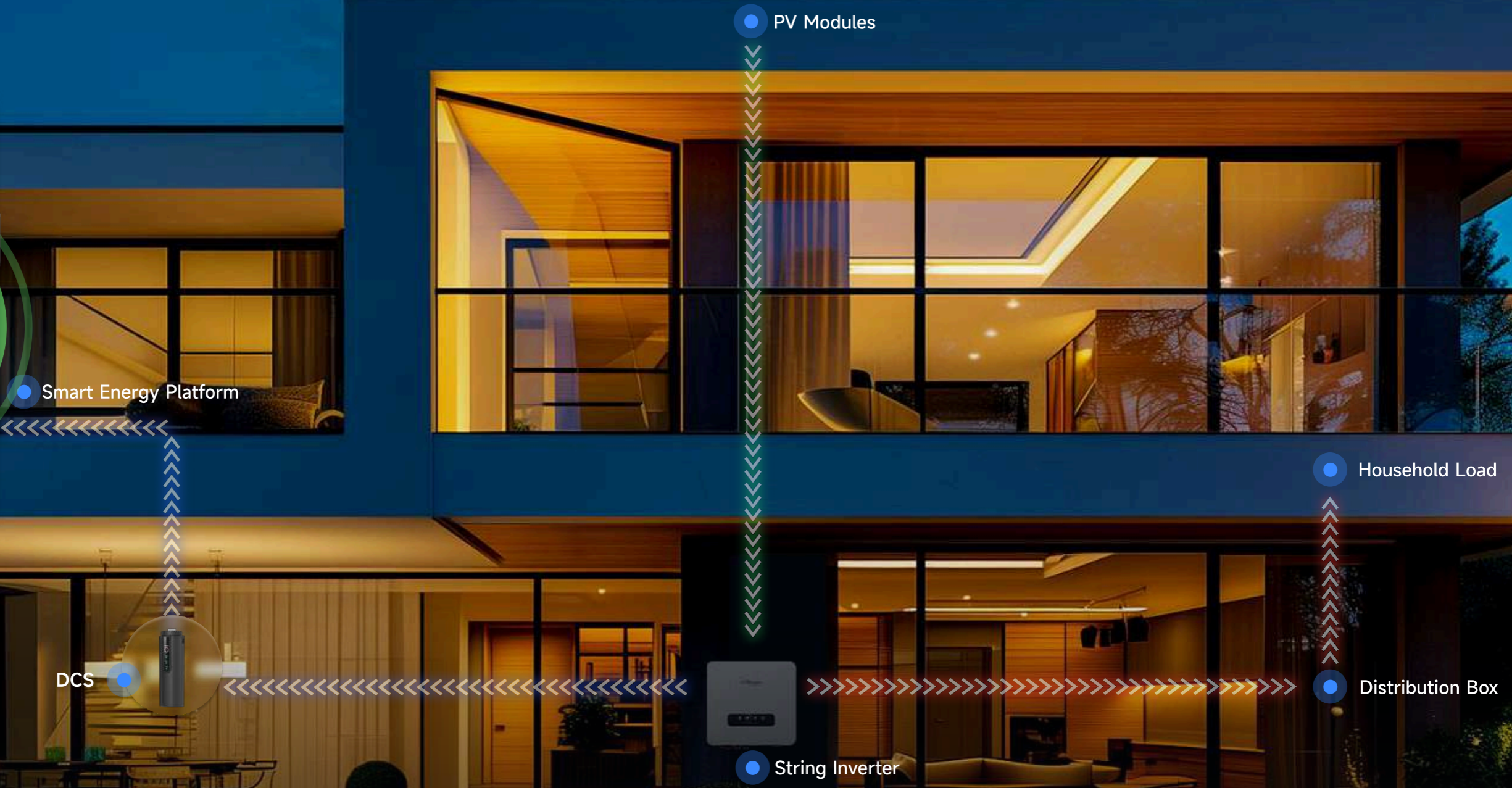
-  **High Efficiency**
- 20A Max. DC input current, 98.5% high conversion efficiency
 - 160% over-sizing, maximizing returns

-  **User-Friendly**
- One-click power station configuration
 - Visualized data and information interface

-  **Intelligent O&M**
- IV curve smart diagnosis*

*This feature will be supported by all future products

Residential String Inverter PV Solution



String Inverter



DCS



String Inverter



OP700 Optimizer



Smart Energy Platform

STRING INVERTER

HYX-S3K/3K6/4K/ 4K6/5K/6K/7K5-S



Safe & Reliable

- IP66, 1,400+ cumulative rigorous tests
- Type II DC/AC surge protection, lightning-proof
- 300m AFCI detection with 0.5s rapid shutdown

Convenient & User-Friendly

- Compact and lightweight design, plug-and-play installation
- App-based quick setup, simple and efficient

Profitable & Efficient

- 160% PV oversizing for extended output
- 98.2% efficiency with wide MPPT range
- 18A design, ideal for high-power modules

Smart & Manageable

- Intelligent IV diagnostics for precise fault identification
- Scenario-based app with real-time energy monitoring

Product Model	HYX-S3K-S	HYX-S3K6-S	HYX-S4K-S	HYX-S4K6-S	HYX-S5K-S	HYX-S6K-S	HYX-S7K5-S
PV Input							
Max. Input Power	4,800W	5,760W	6,400W	7,360W	8,000W	9,600W	12,000W
Max. Input Voltage	600V						
Nominal Input Voltage	360V						
Start-up Voltage	100V						
MPPT Operating Voltage Range	80 - 560V						
MPPT Full Load Voltage Range	200 - 500V						
Max. Input Current Per MPPT	18A						
Max. Short-Circuit Current	24A						
Number of MPPT	2						
Max. Input Number Per MPPT	1 / 1						
AC Output							
Nominal Output Power	3,000W	3,600W	4,000W	4,600W	5,000W	6,000W	7,500W
Max. Apparent Power	3,300VA	3,960VA	4,400VA	5,060VA	5,500VA	6,600VA	7,500VA
Nominal Output Voltage	1 / N / PE, 220V / 230V / 240V						
Nominal AC Grid Frequency	60Hz						
Nominal Output Current	13.6A	16.4A	18.2A	20.9A	22.7A	27.3A	34.0A
Max. Output Current	15.0A	18.0A	20.0A	23.0A	25.0A	30.0A	34.0A
Adjustable Power Factor	0.8 leading...0.8 lagging						
THDi	< 3%						
Efficiency							
Max. Efficiency	98.2%						
European Weighted Efficiency	97.6%						
MPPT Efficiency	99.9%						
Protection							
Active Anti-islanding Protection	Yes						
Residual Current Monitoring	Yes						
DC Reverse Polarity Protection	Yes						
DC Switch	Yes						
AC Short-circuit Protection	Yes						
AC Overvoltage Protection	Yes						
AC Overcurrent Protection	Yes						
DC Surge Protection	Type II						
AC Surge Protection	Type II						
Ground Fault Detection	Yes						
AFCI	Yes						
General Data							
Operating Temperature Range	-25 to + 60°C						
Relative Operating Humidity	0 - 100 %RH						
Operating Altitude	4,000m						
Cooling	Natural Cooling						
Display	LED+App						
Communication	RS485 / 4G / WIFI						
Weight	11.6kg						
Dimensions (W*H*D)	340*360*136mm						
Topology	Non-Isolated						
Degree of Protection	IP66						
Overvoltage Level	PV II / AC III						

STRING INVERTER

HYX-S7K/8K/9K/ 10K/12K-S



Safe & Reliable

- IP66, 1400+ cumulative rigorous tests
- PV optimizers compatible, module-level shutdown
- Type II DC/AC surge protection, lightning-proof
- 300m AFCI detection with 0.5s rapid shutdown

Convenient & User-Friendly

- Compact and lightweight design, plug-and-play installation
- App-based quick setup
- Intelligent layout with rapid module-level visualization

Profitable & Efficient

- 160% PV oversizing for extended output
- 20A design, ideal for high-power modules
- 98.3% efficiency with wide MPPT range

Smart & Manageable

- Module-level monitoring for precise fault positioning
- Intelligent IV diagnostics for precise fault identification
- Scenario-based app with real-time energy monitoring

Product Model	HYX-S7K-S	HYX-S8K-S	HYX-S9K-S	HYX-S10K-S	HYX-S12K-S
PV Input					
Max. Input Power	11,200W	12,800W	14,400W	16,000W	19,200W
Max. Input Voltage	600V				
Nominal Input Voltage	360V				
Start-up Voltage	80V				
MPPT Operating Voltage Range	40 - 560V				
MPPT Full Load Voltage Range	200 - 500V				
Max. Input Current Per MPPT	20A / 20A		20A / 20A / 20A		
Max. Short-Circuit Current	24A / 24A		24A / 24A / 24A		
Number of MPPT	2		3		
Max. Input Number Per MPPT	1 / 1		1 / 1 / 1		
AC Output					
Nominal Output Power	7,000W	8,000W	9,000W	10,000W	12,000W
Max. Apparent Power	7,700VA	8,800VA	9,900VA	11,000VA	13,200VA
Nominal Output Voltage	1 / N / PE, 220V / 230V / 240V				
Nominal AC Grid Frequency	50 / 60Hz				
Nominal Output Current	31.8A / 220V 30.4A / 230V 29.2A / 240V	36.4A / 220V 34.8A / 230V 33.3A / 240V	40.9A / 220V 39.1A / 230V 37.5A / 240V	45.5A / 220V 43.5A / 230V 41.7A / 240V	54.5A / 220V 52.2A / 230V 50A / 240V
Max. Output Current	35A / 220V 33.4A / 230V 32.1A / 240V	40A / 220V 38.3A / 230V 36.7A / 240V	45A / 220V 43A / 230V 41.3A / 240V	50A / 220V 47.9A / 230V 45.8A / 240V	60A / 220V 57.42A / 230V 55A / 240V
Adjustable Power Factor	0.8 leading...0.8 lagging				
THDi	< 3%				
Efficiency					
Max. Efficiency	98.2%				
European Weighted Efficiency	97.6%				
MPPT Efficiency	99.9%				
Protection					
Active Anti-islanding Protection	General Electric Frequency Shift				
Residual Current Monitoring	Yes				
DC Reverse Polarity Protection	Yes				
DC Switch	Yes				
AC Short-circuit Protection	Yes				
AC Overvoltage Protection	Yes				
AC Overcurrent Protection	Yes				
DC Surge Protection	Type II				
AC Surge Protection	Type II				
Ground Fault Detection	Yes				
AFCI	Yes				
General Data					
Operating Temperature Range	-30 to + 60°C				
Relative Operating Humidity	0 - 100 %RH				
Operating Altitude	4,000m				
Cooling	Natural Cooling				
Display	LED+App				
Communication	RS485 / 4G / WIFI				
Weight	23kg				
Dimensions (W*H*D)	522*416*162.5mm				
Topology	Non-Isolated				
Degree of Protection	IP66				
Overvoltage Level	PV II / AC III				

STRING INVERTER

HYX-S5K/6K/8K/10K/12K-T



Safe & Reliable

- IP66, 1400+ cumulative rigorous tests
- PV optimizers compatible, module-level shutdown
- Type II DC/AC surge protection, lightning-proof
- 300m AFCI detection with 0.5s rapid shutdown

Convenient & User-Friendly

- Compact and lightweight design, plug-and-play installation
- App-based quick setup
- Intelligent layout with rapid module-level visualization

Profitable & Efficient

- 160% PV oversizing for extended output
- 18A design, ideal for high-power modules
- 98.5% efficiency with wide MPPT range

Smart & Manageable

- Module-level monitoring for precise fault positioning
- Intelligent IV diagnostics for precise fault identification
- Scenario-based app with real-time energy monitoring

Product Model	HYX-S5K-T	HYX-S6K-T	HYX-S8K-T	HYX-S10K-T	HYX-S12K-T
PV Input					
Max. Input Power	8,000W	9,600W	12,800W	16,000W	19,200W
Max. Input Voltage			1,100V		
Nominal Input Voltage			600V		
Start-up Voltage			160V		
MPPT Operating Voltage Range			140 - 1,000V		
MPPT Full Load Voltage Range			330 - 850V		
Max. Input Current Per MPPT			18A		
Max. Short-Circuit Current			24A		
Number of MPPT			2		
Max. Input Number Per MPPT			1 / 1		
AC Output					
Nominal Output Power	5,000W	6,000W	8,000W	10,000W	12,000W
Max. Apparent Power	5,500VA	6,600VA	8,800VA	11,000VA	13,200VA
Nominal Output Voltage	3L / N / PE, 220 / 380V, 230 / 400V				
Nominal AC Grid Frequency	50 / 60Hz				
Nominal Output Current	7.5A / 380V 7.2A / 400V	9.1A / 380V 8.7A / 400V	12.2A / 380V 11.5A / 400V	15.2A / 380V 14.4A / 400V	18.2A / 380V 17.3A / 400V
Max. Output Current	8.3A / 380V 7.9A / 400V	10A / 380V 9.5A / 400V	13.5A / 380V 12.7A / 400V	16.9A / 380V 15.8A / 400V	20.1A / 380V 19.1A / 400V
Adjustable Power Factor	0.8 leading...0.8 lagging				
THDi	< 3%				
Efficiency					
Max. Efficiency	98.5%				
European Weighted Efficiency	98.1%				
MPPT Efficiency	99.9%				
Protection					
Active Anti-islanding Protection	General Electric Frequency Shift				
Residual Current Monitoring	Yes				
DC Reverse Polarity Protection	Yes				
DC Switch	Yes				
AC Short-circuit Protection	Yes				
AC Overvoltage Protection	Yes				
AC Overcurrent Protection	Yes				
DC Surge Protection	Type II				
AC Surge Protection	Type II				
Ground Fault Detection	Yes				
AFCI	Yes				
General Data					
Operating Temperature Range	-30 to + 60°C				
Relative Operating Humidity	0 - 100 %RH				
Operating Altitude	4,000m				
Cooling	Natural Cooling				
Display	LED+App				
Communication	RS485 / 4G / WIFI				
Weight	21kg				
Dimensions (W*H*D)	522*416*162.5mm				
Topology	Non-Isolated				
Degree of Protection	IP66				
Overvoltage Level	PV II / AC III				

STRING INVERTER HYX-S15K/17K/ 20K/25K-T



Safe & Reliable

- IP66, 1400+ cumulative rigorous tests
- PV optimizers compatible, module-level shutdown
- Type II DC/AC surge protection, lightning-proof
- 300m AFCI detection with 0.5s rapid shutdown

Convenient & User-Friendly

- Compact and lightweight design, plug-and-play installation
- App-based quick setup
- Intelligent layout with rapid module-level visualization

Profitable & Efficient

- 160% PV oversizing for extended output
- 40A design, ideal for high-power modules
- 98.5% efficiency with wide MPPT range

Smart & Manageable

- Module-level monitoring for precise fault positioning
- Intelligent IV diagnostics for precise fault identification
- Scenario-based app with real-time energy monitoring

Product Model	HYX-S15K-T	HYX-S17K-T	HYX-S20K-T	HYX-S25K-T
PV Input				
Max. Input Power	24,000W	27,200W	32,000W	40,000W
Max. Input Voltage			1,100V	
Nominal Input Voltage			600V	
Start-up Voltage			160V	
MPPT Operating Voltage Range			140 - 1,000V	
MPPT Full Load Voltage Range			315 - 850V	
Max. Input Current Per MPPT			40A	
Max. Input Current Per String			20A	
Max. Short-Circuit Current			50A	
Number of MPPT			2	
Max. Input Number Per MPPT			2 / 2	
AC Output				
Nominal Output Power	15,000W	17,000W	20,000W	25,000W
Max. Apparent Power	16,500VA	18,700VA	22,000VA	27,500VA
Nominal Output Voltage			3L / N / PE, 220 / 380V, 230 / 400V	
Nominal AC Grid Frequency			50 / 60Hz	
Nominal Output Current	22.8A / 380V 21.7A / 400V	25.8A / 380V 24.5A / 400V	30.4A / 380V 28.9A / 400V	38.0A / 380V 36.1A / 400V
Max. Output Current	25.2A / 380V 23.9A / 400V	28.6A / 380V 27.1A / 400V	33.6A / 380V 31.9A / 400V	42.0A / 380V 39.9A / 400V
Adjustable Power Factor			0.8 leading...0.8 lagging	
THDi			< 3%	
Efficiency				
Max. Efficiency			98.5%	
European Weighted Efficiency			98.2%	
MPPT Efficiency			99.9%	
Protection				
Active Anti-islanding Protection			General Electric Frequency Shift	
Residual Current Monitoring			Yes	
DC Reverse Polarity Protection			Yes	
DC Switch			Yes	
AC Short-circuit Protection			Yes	
AC Overvoltage Protection			Yes	
AC Overcurrent Protection			Yes	
DC Surge Protection			Type II	
AC Surge Protection			Type II	
Ground Fault Detection			Yes	
AFCI			Yes	
General Data				
Operating Temperature Range			-30 to + 60°C	
Relative Operating Humidity			0 - 100 %RH	
Operating Altitude			4,000m	
Cooling			Smart Air Cooling	
Display			LED+App	
Communication			RS485 / 4G / WIFI	
Weight			27kg	
Dimensions (W*H*D)			519*426*192mm	
Topology			Non-Isolated	
Degree of Protection			IP66	
Overvoltage Level			PV II / AC III	







Microinverter Solution

Overview

HYXiPOWER Microinverter Solution supports module-level independent management, enabling one-stop monitoring and maintenance through modular design and an intelligent platform. The system delivers high-efficiency power generation, precise monitoring, and rapid fault isolation, combined with an ultra-thin design and IP67 protection, providing users with a safe, reliable, and efficient clean energy management experience.

Highlight

-  **High Efficiency**
 - 16A Max. input current
 - 150% over-sizing, maximizing returns
-  **Safe and Reliable**
 - IP67
 - 25-year warranty*
-  **Flexible Design**
 - 25mm ultra-thin body
 - Flexible expansion
-  **Intelligent O&M**
 - Module-level management

*Valid for microinverters purchased in 2025

Microinverter Solution

Smart Energy Platform



Smart Energy Platform

Household Load



Microinverter (on the back)

PV Modules



1-in-1 Microinverter



2-in-1 Microinverter



4-in-1 Microinverter

MICRO INVERTER

HYX-M300/400/500-S

HYX-M300/400/500-SW



Safe & Reliable

- Built-in relay for emergency physical disconnection
- EMC-certified for household safety-level radiation
- 60V low-voltage operation, 6000V surge protection
- IP67, weatherproof and stable

Efficient & Optimized

- Start-up of 20V, 150% overload capacity for higher energy yield
- Module-level MPPT, supports 1 PV module with 500VA max. output
- 16A design, ideal for high-power PV modules

Easy & Flexible

- Compact hook design, easy installation
- Plug-and-play with flexible scalability
- Sub-1G and WiFi support, iMesh for stability

Smart & Manageable

- Intelligent layout with rapid module-level visualization
- Module-level monitoring for precise fault positioning
- One-click OTA enabling fast fault resolution

Product Model	HYX-M300-S HYX-M300-SW	HYX-M400-S HYX-M400-SW	HYX-M500-S HYX-M500-SW
Input (DC)			
Typical Module Compatibility	240 - 450* W	320 - 600* W	400 - 670* W
Min./Max. MPPT Voltage	16 - 60V		
Max. Input Voltage	65V		
Start-up Input Voltage	20V		
Max. Input Current	16A		
Max. Short-circuit DC Input Current	20A		
Output (AC)			
Nominal Output Power	300VA	400VA	500VA
Nominal Output Current	1.36A / 1.30A / 1.25A	1.82A / 1.74A / 1.67A	2.27A / 2.17A / 2.08A
Nominal Output Voltage	220V / 230V / 240V		
Adjustable Output Voltage Range	183 - 276V		
Nominal Frequency	50 / 60Hz		
Adjustable Output Frequency Range	45 - 55Hz, 55 - 65Hz		
Power Factor (default / adjustable)	>0.99 / 0.8 leading...0.8 lagging		
THDi	< 3%		
Max. Units Per 10AWG Branch	20 / 21 / 22	15 / 16 / 16	12 / 12 / 13
Max. Units Per 12AWG Branch	15 / 16 / 17	11 / 12 / 13	9 / 10 / 10
Efficiency			
Peak Efficiency	96.70%		
Nominal MPPT Efficiency	99.80%		
Night-time Power Loss	< 30mW		
General Data			
Operating Ambient Temperature	- 40 to + 65°C		
Dimensions (W*H*D)	188*178*25mm		
Degree of Protection	IP67		
Cooling	Natural Cooling - No fans		
Weight	1.7kg		
Features			
Communication ¹	Sub-1G / Built-in WiFi		
Type of Isolation	High frequency transformers, Galvanically isolated		
Warranty	12 years standard, 25 years optional		
Protection			
Input Reverse Connection Protection	Yes		
Output Overcurrent Protection	Yes		
Output Overvoltage Protection	Yes		
Anti-islanding Protection	Yes		
Output Short-circuit Protection	Yes		

¹ **Sub-1G:** HYX-M300/400/500-S, **Built-in WiFi:** HYX-M300/400/500-SW
Nominal voltage/frequency range can vary depending on local requirements.
Refer to local requirements for exact number of microinverters per branch.

MICRO INVERTER

HYX-M600/700/800/900/1000-S HYX-M600/700/800/900/1000-SW



Safe & Reliable

- Built-in relay for emergency physical disconnection
- EMC-certified for household safety-level radiation
- 60V low-voltage operation, 6000V surge protection
- IP67, weatherproof and stable

Efficient & Optimized

- Start-up of 20V, 150% overload capacity for higher energy yield
- Module-level MPPT, supports 2 PV module with 1000VA max. output
- 16A design, ideal for high-power PV modules

Easy & Flexible

- Compact hook design, easy installation
- Plug-and-play with flexible scalability
- Sub-1G and WiFi support, iMesh for stability

Smart & Manageable

- Intelligent layout with rapid module-level visualization
- Module-level monitoring for precise fault positioning
- One-click OTA enabling fast fault resolution

Product Model	HYX-M600-S HYX-M600-SW	HYX-M700-S HYX-M700-SW	HYX-M800-S HYX-M800-SW	HYX-M900-S HYX-M900-SW	HYX-M1000-S HYX-M1000-SW
Input (DC)					
Typical Module Compatibility	240 - 450* W	280 - 525* W	320 - 600* W	360 - 670* W	400 - 670* W
Min./Max. MPPT Voltage	16 - 60V				
Max. Input Voltage	65V				
Start-up Input Voltage	20V				
Max. Input Current	2*16A				
Max. Short-circuit DC Input Current	2*20A				
Output (AC)					
Nominal Output Power	600VA	700VA	800VA	900VA	1000VA
Nominal Output Current	2.73A / 2.61A / 2.5A	3.18A / 3.04A / 2.92A	3.64A / 3.48A / 3.33A	4.09A / 3.91A / 3.75A	4.55A / 4.35A / 4.17A
Nominal Output Voltage	220V / 230V / 240V				
Adjustable Output Voltage Range	183 - 276V				
Nominal Frequency	50 / 60Hz				
Adjustable Output Frequency Range	45 - 55Hz, 55 - 65Hz				
Power Factor (default / adjustable)	>0.99 / 0.8 leading...0.8 lagging				
THDi	< 3%				
Max. Units Per 10AWG Branch	10 / 10 / 11	8 / 9 / 9	7 / 8 / 8	6 / 6 / 6	6 / 6 / 6
Max. Units Per 12AWG Branch	7 / 8 / 8	6 / 7 / 7	5 / 6 / 6	5 / 5 / 5	4 / 5 / 5
Efficiency					
Peak Efficiency	96.70%				
Nominal MPPT Efficiency	99.80%				
Night-time Power Loss	< 30mW				
General Data					
Operating Ambient Temperature	- 40 to + 65°C				
Dimensions (W*H*D)	252*180*35mm				
Degree of Protection	IP67				
Cooling	Natural Cooling - No fans				
Weight	3kg				
Features					
Communication ¹	Sub-1G / Built-in WiFi				
Type of Isolation	High frequency transformers, Galvanically isolated				
Warranty	12 years standard, 25 years optional				
Protection					
Input Reverse Connection Protection	Yes				
Output Overcurrent Protection	Yes				
Output Overvoltage Protection	Yes				
Anti-islanding Protection	Yes				
Output Short-circuit Protection	Yes				

¹ **Sub-1G:** HYX-M600/700/800/900/1000-S, **Built-in WiFi:** HYX-M600/700/800/900/1000-SW
Nominal voltage/frequency range can vary depending on local requirements.
Refer to local requirements for exact number of microinverters per branch.

MICRO INVERTER

HYX-M1600/1800/2000-S

HYX-M1600/1800/2000-SW



Safe & Reliable

- Built-in relay for emergency physical disconnection
- EMC-certified for household safety-level radiation
- 60V low-voltage operation, 6000V surge protection
- IP67, weatherproof and stable

Efficient & Optimized

- Start-up of 20V, 150% overload capacity for higher energy yield
- Module-level MPPT, supports 4 PV module with 2000VA max. output
- 16A design, ideal for high-power PV modules

Easy & Flexible

- Compact hook design, easy installation
- Plug-and-play with flexible scalability
- Sub-1G and WiFi support, iMesh for stability

Smart & Manageable

- Intelligent layout with rapid module-level visualization
- Module-level monitoring for precise fault positioning
- One-click OTA enabling fast fault resolution

Product Model	HYX-M1600-S HYX-M1600-SW	HYX-M1800-S HYX-M1800-SW	HYX-M2000-S HYX-M2000-SW
Input (DC)			
Typical Module Compatibility	320 - 600* W	360 - 670* W	400 - 670* W
Min./Max. MPPT Voltage	16 - 60V		
Max. Input Voltage	65V		
Start-up Input Voltage	20V		
Max. Input Current	4*16A		
Max. Short-circuit DC Input Current	4*20A		
Output (AC)			
Nominal Output Power	1600VA	1800VA	2000VA
Nominal Output Current	7.27A / 6.96A / 6.67A	8.18A / 7.83A / 7.50A	9.09A / 8.70A / 8.33A
Nominal Output Voltage	220V / 230V / 240V		
Adjustable Output Voltage Range	183 - 276V		
Nominal Frequency	50 / 60Hz		
Adjustable Output Frequency Range	45 - 55Hz, 55 - 65Hz		
Power Factor (default / adjustable)	>0.99 / 0.8 leading...0.8 lagging		
THDi	< 3%		
Max. Units Per 10AWG Branch	3 / 4 / 4	3 / 3 / 3	3 / 3 / 3
Max. Units Per 12AWG Branch	2 / 3 / 3	2 / 2 / 2	2 / 2 / 2
Efficiency			
Peak Efficiency	96.70%		
Nominal MPPT Efficiency	99.80%		
Night-time Power Loss	< 30mW		
General Data			
Operating Ambient Temperature	- 40 to + 65°C		
Dimensions (W*H*D)	310*236*35.5mm		
Degree of Protection	IP67		
Cooling	Natural Cooling - No fans		
Weight	5kg		
Features			
Communication ¹	Sub-1G / Built-in WiFi		
Type of Isolation	High frequency transformers, Galvanically isolated		
Warranty	12 years standard, 25 years optional		
Protection			
Input Reverse Connection Protection	Yes		
Output Overcurrent Protection	Yes		
Output Overvoltage Protection	Yes		
Anti-islanding Protection	Yes		
Output Short-circuit Protection	Yes		

¹ **Sub-1G:** HYX-M1600/1800/2000-S, **Built-in WiFi:** HYX-M1600/1800/2000-SW
Nominal voltage/frequency range can vary depending on local requirements.
Refer to local requirements for exact number of microinverters per branch.

BALCONY MICRO STORAGE SYSTEM HYX-MS-2500



Advanced Performance

- Dual MPPT with 1200W solar input for maximum power generation and efficiency
- Supports outdoor power applications, with USB-A and Type C charging interfaces

Flexible Adaptability

- Compatible with 99% microinverters
- Flexible Expansion, up to 10.24kWh

Assured Safety

- Reliable Performance indoors and out with IP66
- Worry-free Operation in -20°C extremely cold environments

Intelligent Design

- Plug&play Design for ultra-fast installation
- Large capacity design to maximize savings on household electricity bills

Product Model	HYX-MS-2500
PV Input	
Max. PV Input Power	1200W
Max. PV Input Voltage	60V
MPPT Voltage Range	12 – 60V
Max. PV Input Current	18A
Number of MPPT	2
Number of PV String per MPPT	1
Battery Output (To Microinverter)	
Nominal Output Apparent Power	800VA
Max. Output Apparent Power	1200VA
Rated Output Voltage / Range	12 – 60V
Max. Output Current	18A
Battery Output (To External Devices)	
USB-A (2 ports)	5/9/12V – 2A 24W Max, per port
TYPE-C (2 ports)	5/9/12/15V – 3A 20/28V – 5A 140W Max, per port
Battery	
Battery Type	LiFePO4
Battery Capacity	2.56kWh
Max. Expansion Capacity	10.24kWh (Up to 4 units)
Battery Nominal Voltage	51.2V
Max. Charging Power	1200W
Max. Charging Current	30A
Battery Cycle Life	>6000 (@25°C±2°C, 0.5C/0.5C, 70%EOL)
General	
Max. Output Efficiency	98%
MPPT Efficiency	99%
Ingress Protection	IP66
Charging Temperature Range	-20 to +55°C ¹
Discharging Temperature Range	-20 to +60°C
Max. Operating Altitude	3000m
Dimensions (W*H*D)	490*350*255mm
Weight	30kg
Display	LED
Cooling	Natural Cooling
Communication	WiFi & Bluetooth
Warranty	10 years
Certification	CE, ROHS

1: Support -20°C startup and automatically self-heat the device for a certain time to the charge temperature range.



Residential ESS Solution

Overview

HYXiPOWER Residential ESS Solution combines PV generation and storage for self-consumption. Supporting both grid-connected and off-grid modes, it is ideal for areas with unstable grids or price fluctuations. Using high-safety lithium iron phosphate batteries, it ensures stable operation and provides emergency power during outages, offering an efficient and energy-saving energy management solution.

Highlight



High Efficiency

- PV and energy storage integrated
- High conversion efficiency to maximize revenue



Safe and Reliable

- Cell-level management
- Real-time monitoring of battery operation status



Flexible Design

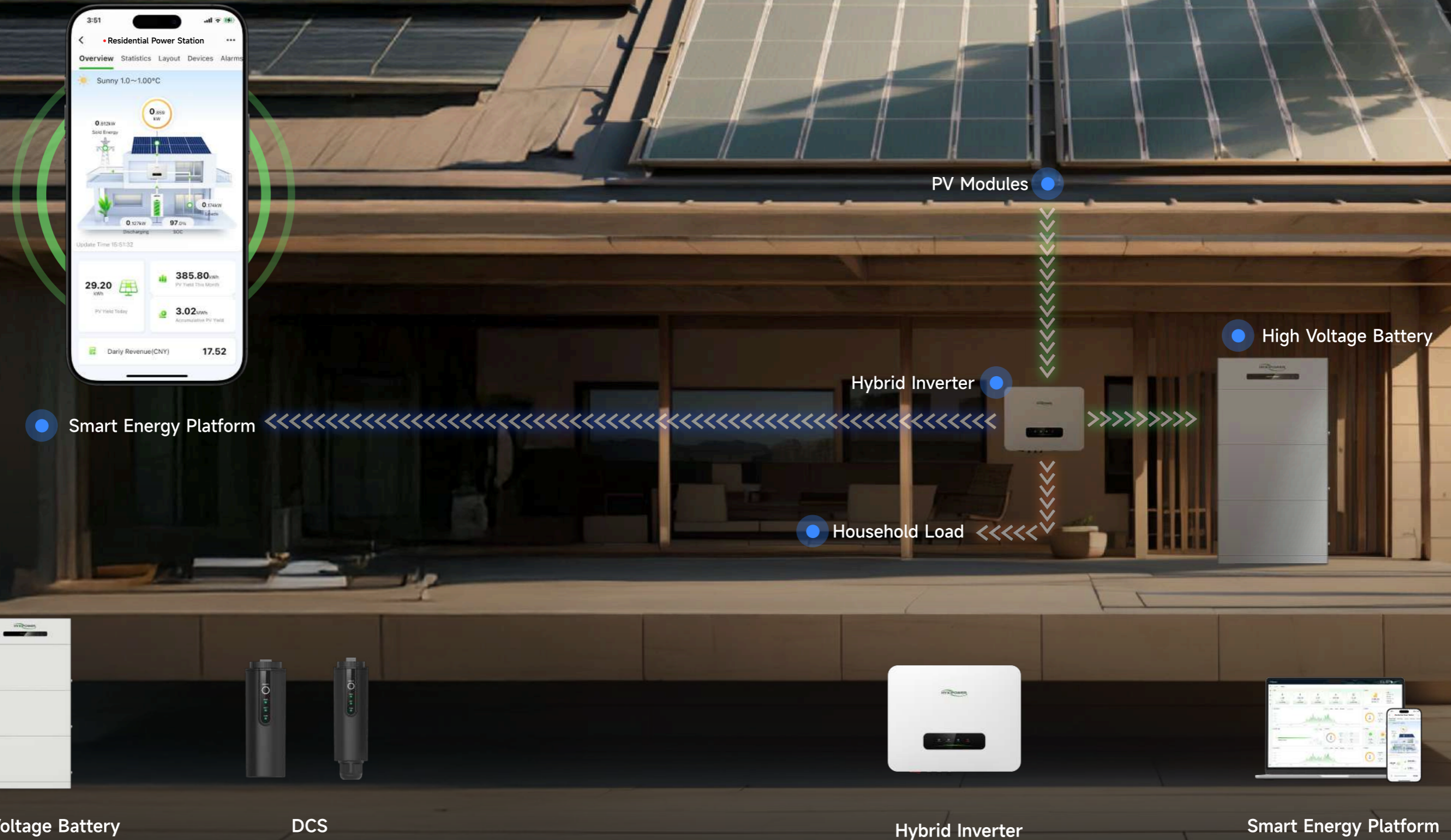
- Real-time monitoring of home power operation
- Multi-mode free switching



Intelligent O&M

- Intelligent detection for comprehensive O&M

Residential ESS Solution



STACKABLE ALL-IN-ONE ESS

2PACK:6kW/10kWh

3PACK:9kW/15kWh

4PACK:12kW/20kWh

5PACK:15kW/25kWh



Safe & Reliable

- IP67, C4 salt spray resistance
- A+ grade cells with automotive-grade standard
- Smoke detection, active pressure relief
- Type II DC/AC surge protection, lightning-proof
- 300m AFCI detection with 0.5s rapid shutdown

Convenient Installation

- No meter/CT or additional accessories
- No electrical system modifications needed
- Stackable design for 10-25kWh capacity flexibility

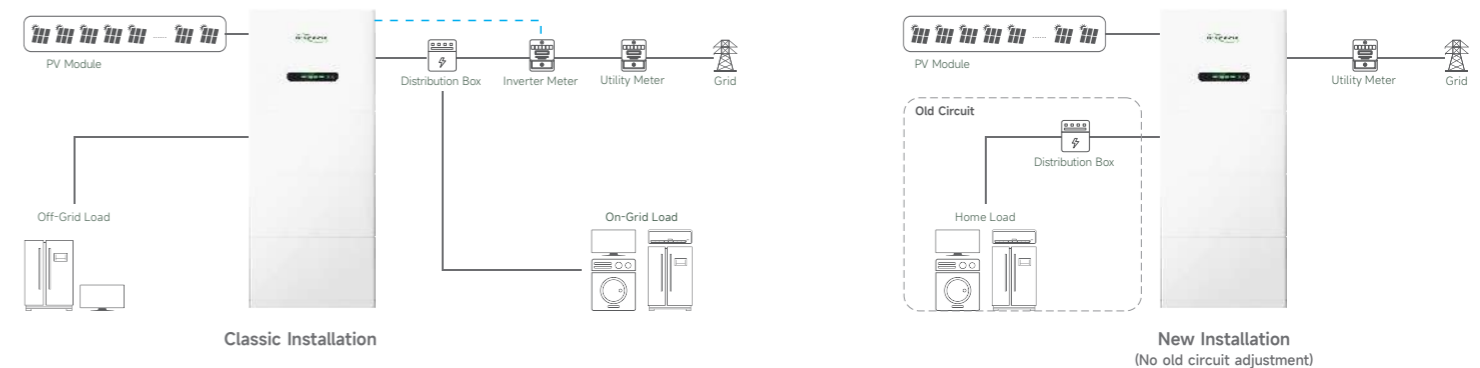
Advanced Performance

- Industry-first zero injection without meter/CT
- 160% overload capacity, 150% instant off-grid overload
- UPS-grade seamless on/off-grid switching
- Three-phase unbalanced output for max. PV utilization

Ultimate Experience

- Automotive-grade BMS for efficient energy management
- Scenario-based app with real-time energy monitoring
- AI-powered cloud with 24/7 alerts and optimization
- Intelligent control for generators and heat pumps

Product Model	HYX-H6K-HTA	HYX-H9K-HTA	HYX-H12K-HTA	HYX-H15K-HTA
System				
Hybrid Inverter			1	
Battery Module	2	3	4	5
Base			1	
PV Data				
Max. Input Power (max input power of each string)	160% Rated Total 9,600W(each string≤8,000W)	160% Rated Total 14,400W(each string≤8,000W)	160% Rated Total 19,200W(each string≤8,000W)	160% Rated Total 24,000W(each string≤8,000W)
Max. Input Voltage			1,000V	
MPPT Operating Voltage Range			140 - 980V	
Start-Up Voltage			160V	
Max. Input Current			20A / 40A	
Max. Short Circuit Current			30A / 60A	
Number of MPPT			2	
PV Input Number (Number of String Per MPPT)			3 (1 / 2)	
AC Data				
Grid Type		3/N/PE, 220V/380V, 230V/400V, 240V/415V		
Nominal Frequency		50Hz / 60Hz		
Max. Passthrough Current		63A per phase		
Max. Apparent Power Output to Utility	6,600VA	9,900VA	13,200VA	16,500VA
Output Power Factor		0.8 leading ... 0.8 lagging		
THDi		<3%		
Backup				
Max. Continuous Output Power	6,600W	9,900W	13,200W	16,500W
Peak Output Power (with PV)	150% Rated 9,000W, 10s	150% Rated 13,500W, 10s	150% Rated 18,000W, 10s	150% Rated 22,500W, 10s
Switch Time			< 10ms	
Battery				
Battery Type			LiFePO4	
Total Battery Capacity	10.6kWh	15.9kWh	21.2kWh	26.5kWh
General				
Operating Temperature			-10-50 °C	
Cooling Method			Natural Cooling	
Ingress Protection			IP67	
Dimensions (W*H*D)	700*1320*200mm	700*1670*200mm	700*2020*200mm	700*2370*200mm
Weight	152kg	202kg	252kg	302kg
Max. Operating Altitude			4,000m	
User Interface			LED / App / Web	
Communication			CAN / RS485 / WIFI / 4G / LAN / PLC	



STACKABLE AC BATTERY

2PACK:6kW/10kWh

3PACK:9kW/15kWh

4PACK:12kW/20kWh

5PACK:15kW/25kWh



Safe & Reliable

- IP67, C4 salt spray resistance
- A+ grade cells with automotive-grade standard
- Smoke detection, active pressure relief

Convenient Installation

- No meter/CT or additional accessories
- No electrical system modifications needed
- Stackable design for 10-25kWh capacity flexibility

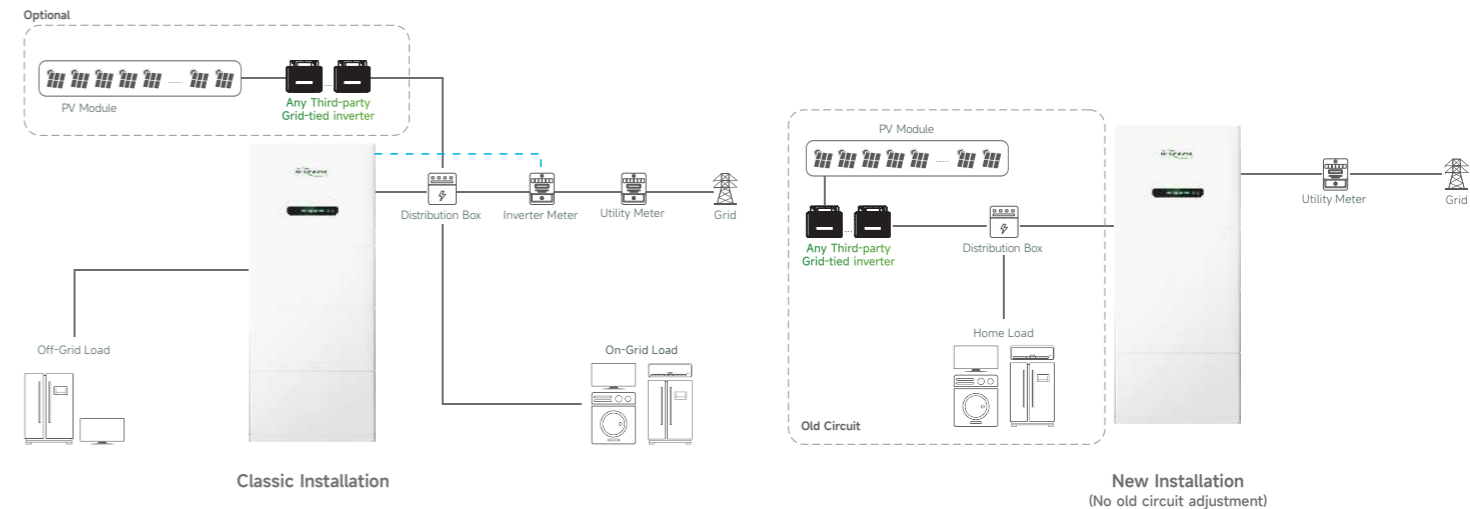
Advanced Performance

- Industry-first zero injection without meter/CT
- Three-phase unbalanced output for max. PV utilization
- System-level expert control
- UPS-grade seamless on/off-grid switching

Ultimate Experience

- Automotive-grade BMS for efficient energy management
- Scenario-based app with real-time energy monitoring
- AI-powered cloud with 24/7 alerts and optimization
- Intelligent control for generators and heat pumps

Product Model	HYX-H6K-HTAC	HYX-H9K-HTAC	HYX-H12K-HTAC	HYX-H15K-HTAC
System				
Hybrid Inverter			1	
Battery Module	2	3	4	5
Base			1	
AC Data				
Grid Type	3/N/PE, 220V/380V, 230V/400V, 240V/415V			
Nominal Frequency	50Hz / 60Hz			
Max. Passthrough Current	63A per phase			
Max. Apparent Power Output to Utility	6,600VA	9,900VA	13,200VA	16,500VA
Output Power Factor	0.8 leading ... 0.8 lagging			
THDi	<3%			
Backup				
Max. Continuous Output Power	6,600W	9,900W	13,200W	16,500W
Max Peak Output Power	7,000W, 10s	10,500W, 10s	14,000W, 10s	17,500W, 10s
Switch Time	< 10ms			
Battery				
Battery Type	LiFePO4			
Total Battery Capacity	10.6kWh	15.9kWh	21.2kWh	26.5kWh
Smoke Detection	Integrated			
Pressure Relief Valve	Integrated			
General				
Operating Temperature	-10~50 °C			
Cooling Method	Natural Cooling			
Ingress Protection	IP67			
Dimensions (W*H*D)	700*1320*200mm	700*1670*200mm	700*2020*200mm	700*2370*200mm
Weight	TOP module (46.4kg)*1+PACK (44kg)*N+base (5.6kg)*1			
Max. Operating Altitude	4,000m			
User Interface	LED / App / Web			
Communication	CAN / RS485 / WIFI / 4G / LAN / PLC			
Noise Emmission	<30 dB			
DC/AC Surge Arrester	AC/DC II/II			



HIGH VOLTAGE BATTERY

HYX-E50/100/150/200/250-H2

HYX-E300/400/500-H2



Safe & Reliable

- A+ grade cells with automotive-grade standard
- Smoke detection, active pressure relief
- IP65, C4 salt spray resistance

Convenient & User-Friendly

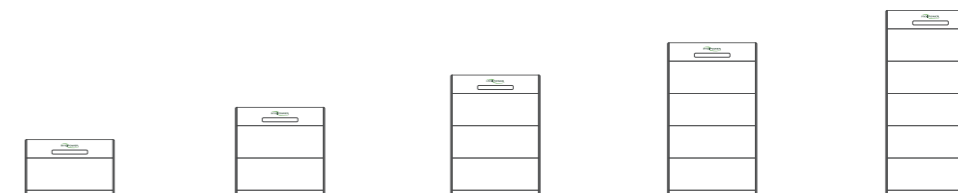
- Flat design for easy integration
- Quick-plug interface for simple installation
- Stackable design for 5-50kWh capacity flexibility

Efficient & Durable

- 32A fast charging/discharging support
- LiFePO4 cells with 6000+ charge/discharge cycles
- Optional PV module pre-heating for broad applications

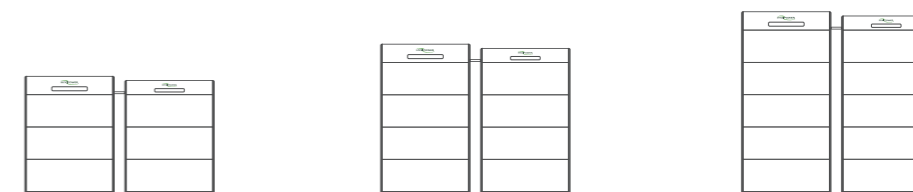
Smart & Manageable

- Automotive-grade BMS for efficient energy management
- Scenario-based app with real-time energy monitoring
- AI-powered cloud with 24/7 alerts and optimization



Battery System	HYX-E50-H2	HYX-E100-H2	HYX-E150-H2	HYX-E200-H2	HYX-E250-H2
Total Battery Capacity	5.3kWh	10.6kWh	15.9kWh	21.2kWh	26.5kWh
Usable Capacity ¹	4.8kWh	9.6kWh	14.4kWh	19.2kWh	24kWh
Nominal Voltage	102.4V	204.8V	307.2V	409.6V	512V
Working Voltage	86.4 - 115.2V	172.8 - 230.4V	259.2 - 345.6V	345.6 - 460.8V	432 - 576V
Nominal Output Power	3.0kW	6.0kW	9.0kW	12.0kW	15.0kW
DOD	90%				
Cell Type	LiFePO4				
Max. Charging/Discharging Current	32A				
SOC Indicator	4*LED (25%, 50%, 75%, 100%)				
State Indicator	2*LED (work, alarm)				
Communication	CAN, RS485				
Working Temperature	-10 to +50°C				
Ingress Protection Rating	IP65 (PACK IP67)				
Working Humidity	5 - 95% RH				
Working Altitude	< 4,000m				
Calendar Life	> 6,000 (70%EOL)				
Dimensions (W*H*D)	700*600*200mm	700*950*200mm	700*1,300*200mm	700*1,650*200mm	700*2,000*200mm
Net Weight	BDU (9kg)*1+PACK (44kg)*N+base (5.6kg)*1				
Alarms	Over charge / Over discharge / Over current / Over temperature / Short circuit				
Warranty	10 years				

1: Test conditions: 100% depth of discharge, 0.2C rate charge & discharge at 25°C, at the beginning of service life.



Battery System	HYX-E300-H2	HYX-E400-H2	HYX-E500-H2
Total Battery Capacity	31.8kWh	42.4kWh	53kWh
Usable Capacity ¹	28.8kWh	38.4kWh	48kWh
Nominal Voltage	307.2V	409.6V	512V
Working Voltage	259.2 - 345.6V	345.6 - 460.8V	432 - 576V
Nominal Output Power	18.0kW	24.0kW	30.0kW
DOD	90%		
Cell Type	LiFePO4		
Max. Charging/Discharging Current	60A		
SOC Indicator	4*LED (25%, 50%, 75%, 100%)		
State Indicator	2*LED (work, alarm)		
Communication	CAN, RS485		
Working Temperature	-10 to +50°C		
Ingress Protection Rating	IP65 (PACK IP67)		
Working Humidity	5 - 95%RH		
Working Altitude	< 4,000m		
Calendar Life	> 6,000 (70%EOL)		
Dimensions (W*H*D)	Master: 700*1,350*200mm Slave: 700*1,300*200mm	Master: 700*1,700*200mm Slave: 700*1,650*200mm	Master: 700*2,050*200mm Slave: 700*2,000*200mm
Net Weight	BDUP (10.5kg)*1+BDU (9kg)*1+PACK (44kg)*N+base (5.6kg)*2		
Alarms	Over charge / Over discharge / Over current / Over temperature / Short circuit		
Warranty	10 years		

1: Test conditions: 100% depth of discharge, 0.2C rate charge & discharge at 25°C, at the beginning of service life.

HIGH VOLTAGE BATTERY

HYX-E50-H3

HYX-E100-H3



Safety

- Cell temperature collection, built-in breaker & fuse
- IP65 Protection degree

Performance



- 90% Depth of Discharge, Ultra-low power consumption
- LiFePO4 cell configuration, safety and long cycle life
- High Voltage and High Efficiency

Simplicity

- Integrated design, Easy Installation
- Streamlined structure, Space-saving

Flexible

- Wall-mounted & floor-mounted
- Scalable to 40kWh

Battery System	HYX-E50-H3	HYX-E100-H3
Appearance		
Total Battery Capacity	5.12kWh	10.4kWh
Usable Capacity ¹	4.6kWh	9.36kWh
Nominal Voltage	102.4V	208V
Working Voltage	86.4 - 115.2V	175.5 - 234V
Cell Type	LiFePO4	
Nominal Charging/Discharging Current	25A	
Max. Charge/Discharge Current	30A	
Peak Charge/Discharge Current	60A (10S, 25°C)	
Dimensions (W*H*D)	535*498*185.7mm	640*730*185mm
Net Weight	56kg	105kg
SOC Indicator	4*LED (25%, 50%, 75%, 100%)	
State Indicator	2*LED (work, alarm)	
Working Temperature	Charge: 0 to +55°C Discharge: -20 to +55°C	
Ingress Protection Rating	IP65	
Working Humidity	5 - 95%RH	
Calendar Life	> 6,000 (70%EOL)	
Installation	Wall-Mounted, Floor-Mounted	
Altitude	≤ 3,000m	
Communication	CAN, RS485	

¹: Test conditions: 100% depth of discharge, 0.2C rate charge & discharge at 25°C, at the beginning of service life.

Preliminary

RACK-MOUNTED BATTERY (HV) HYX-E(150-600)-HR



Safe & Reliable

- Cell temperature collection, Multiple protection mechanism
- Precise Monitoring of SOH

Convenient & User-Friendly

- Flexible expansion, 15-240kWh
- Rack stackable design, easy installation

Efficient & Durable

- LiFePO4 cells with 4000+ charge/discharge cycles
- 100A fast charging/discharging support

Smart & Manageable

- Automotive-grade BMS for efficient energy management
- AI-powered cloud with 24/7 alerts and optimization

HYX-E(150-600)-HR Technical Specifications

Rack System Control Unit Model	HYX-EBDU-HR HYX-E50B-HR
Battery Type	LiFePO4
Nominal Battery Energy	5.22 kWh
Nominal Capacity	102 Ah
Nominal Voltage	51.2 V
Charge/Discharge Current	Recommend:50 A; Maximum:100 A
Weight	45 kg
Dimensions (W*H*D)	465*545.3*135 mm
Working Temperature	Charge: 0-50°C; Discharge: -20-50°C
Communication	CAN
Cycle Life	> 4000 (70%EOL)
Recommend Depth of Discharge	95%
Protection Level	IP20
Expansion	Up to 12 units in series

System Model	HYX-E150-HR	HYX-E200-HR	HYX-E250-HR	HYX-E300-HR	HYX-E350-HR
Battery Module Number (3-7)	3 units	4 units	5 units	6 units	7 units
System Nominal Energy	15.66 kWh	20.88 kWh	26.11 kWh	31.33 kWh	36.55 kWh
System Usable Energy	14.88 kWh	19.84 kWh	24.80 kWh	29.76 kWh	34.72 kWh
System Nominal Voltage	153.6 V	204.8 V	256 V	307.2 V	358.4 V
System Operating Voltage	134.4-172.8 V	179.2-230.4 V	224-288 V	268.8-345.6 V	313.6-403.2 V
System Nominal Power	7.68 kW	10.24 kW	12.80 kW	15.36 kW	17.92 kW
Charge/Discharge Current	Recommend: 50 A; Maximum: 100 A				
Altitude	≤ 2000 m				
Ingress Protection	IP20				
Communication	CAN, RS485				
Installation Location	Rack Mounting				
Weight	182 kg	230 kg	278 kg	326 kg	375 kg
Dimensions (W*H*D)	4 PACK + 1 BDU: 480.6*537*805 mm; 6 PACK + 1 BDU: 480.6*537*1095 mm				

System Model	HYX-E400-HR	HYX-E450-HR	HYX-E500-HR	HYX-E550-HR	HYX-E600-HR
Battery Module Number (8-12)	8 units	9 units	10 units	11 units	12 units
System Nominal Energy	41.77 kWh	47.00 kWh	52.22 kWh	57.44 kWh	62.66 kWh
System Usable Energy	39.68 kWh	44.65 kWh	49.61 kWh	54.57 kWh	59.53 kWh
System Nominal Voltage	409.6 V	460.8 V	512 V	563.2 V	614.4 V
System Operating Voltage	358.4-460.8 V	403.2-518.4 V	448-576 V	492.8-633.6 V	537.6-691.2 V
System Nominal Power	20.48 kW	23.04 kW	25.60 kW	28.16 kW	30.72 kW
Charge/Discharge Current	Recommend: 50 A; Maximum: 100 A				
Altitude	≤ 2000 m				
Ingress Protection	IP20				
Communication	CAN, RS485				
Installation Location	Rack Mounting				
Weight	423 kg	472 kg	520 kg	568 kg	617 kg
Dimensions (W*H*D)	4 PACK + 1 BDU: 480.6*537*805 mm; 6 PACK + 1 BDU: 480.6*537*1095 mm				

HYBRID INVERTER HYX-H3K/3K6/ 5K/6K-HS1



Reliable

- Type II surge protection
- IP65 design

Simple

- 30mins quick installation
- Easy working mode, set and forget
- Built-in meter, easy connection

Efficient

- 160% PV oversizing, 200% backup turbo output
- 50V ultra-low start-up voltage for longer operation
- 18A PV current wide adaptation

Intelligent

- Smart working logic
- Generator & AC couple retrofit support
- Mobile & PC platform management

HYX-H3K/3K6/5K/6K-HS1 Technical Specifications

Product Model	HYX-H3K-HS1	HYX-H3K6-HS1	HYX-H5K-HS1	HYX-H6K-HS1
PV Input				
Max. Input Power	4800W	5760W	8000W	9600W
Max. Input Voltage	600V			
Start-up Voltage	50V			
MPPT Operating Voltage Range	80 - 560V			
Max. Input Current	18A / 18A			
Max. Short-circuit Current	20A / 20A			
Number of MPP Trackers	2			
AC Input / Output				
Nominal Power	3000W	3600W	5000W	6000W
Max. Apparent Power	3300VA	3960VA	5500VA	6600VA
Nominal Current	13.6A	16.3A	22.7A	27.2A
Max. Current	15A	18A	25A	30A
Nominal Voltage	220 / 230 / 240V, 1 / N / PE			
AC Voltage Range	154 - 276V			
THDi	3 - 5%			
Frequency	50 / 45-55Hz; 60 / 55-65Hz			
Adjustable Power Factor	>0.99 / 0.8 leading...0.8 lagging			
DC Current Injection	< 0.5%I _n			
Back-Up(AC Output)				
Nominal Output Power	3000VA	3600VA	5000VA	6000VA
Max. Continues Output Apparent Power	3300VA	3960VA	5500VA	6600VA
Peak Output Power	6000W;10s	7200W;10s	10000W;10s	12000W;10s
Max. Output Current	15A	18A	25A	30A
Switch Time	< 10ms			
Battery				
Battery Type	LiFePO4			
Battery Voltage Range	80 - 490V			
Max. Charge/Discharge Current	30A			
Max. Charge Power	3000W	3600W	5000W	6000W
Max. Discharge Power	3300W	3960W	5500W	6600W
Protection				
Residual Current Monitoring	Yes			
DC/AC Surge Protection	Type II			
AC Short-circuit Protection	Yes			
AC Over Voltage Protection	Yes			
Over Frequency Protection	Yes			
Grounded Fault Detection	Yes			
General Data				
Operating Temperature Range	-25 to +60°C			
Relative Operating Humidity	0 - 100%RH			
Cooling	Natural Cooling			
Display	LED / App / Web			
Communication	CAN / RS485 / WIFI / 4G / LAN			
Weight	20kg			
Dimensions (W*H*D)	360*340*136mm			
Degree of Protection	IP65			
Over Voltage Category	DC II/ AC II			
Mounting	Wall Mounted			

HYBRID INVERTER

HYX-H3K/3K6/4K/ 4K6/5K/6K/8K-HS



Safe & Reliable

- Type II DC/AC surge protection, lightning-proof
- 300mA AFCI detection with 0.5s rapid shutdown
- IP65, C4 salt spray resistance

Convenient & User-Friendly

- Compact design, 30-minute quick installation
- App-enabled quick setup, simple and efficient
- UPS-grade seamless on/off-grid switching

Profitable & Efficient

- Start-up of 50V, wide MPPT range for higher revenue
- 160% overload capacity, 150% instant off-grid overload
- 16A design, 35A battery fast charging/discharging

Smart & Manageable

- Intelligent IV diagnostics for precise fault identification
- Scenario-based app with real-time energy monitoring
- Intelligent control for generators and heat pumps

Product Model	HYX-H3K-HS	HYX-H3K6-HS	HYX-H4K-HS	HYX-H4K6-HS	HYX-H5K-HS	HYX-H6K-HS	HYX-H8K-HS
PV Input							
Max. Array Power	6,000W	7,200W	8,000W	9,200W	10,000W	12,000W	1,6000W
Max. Input Power	3,000W / 1,800W	3,600W / 2,160W	4,000W / 2,400W	4,600W / 2,760W	5,000W / 3,000W	5,000W / 4,600W	6,400W / 6,400W
Max. Input Voltage	600V						
Start-up Voltage	50V						
MPPT Operating Voltage Range	80 - 560V						
Max. Input Current	32A (16 / 16)						
Max. Short-circuit Current	48A (24 / 24)						
Number of MPPTs	2						
PV input number(Number of String Per MPPT)	2 (1 / 1)						
AC Input / Output							
Nominal Power	3,000W	3,600W	4,000W	4,600W	5,000W	6,000W	8,000W
Max. Apparent Power	3,300VA	4,000VA	4,400VA	5,060VA	5,500VA	6,600VA	8,800VA
Nominal Current	13.6A	16.3A	18.1A	20.9A	22.7A	27.2A	36.3A
Max. Current	15.0A	18.0A	20.0A	23.0A	25.0A	30.0A	40.0A
Nominal Voltage	1 / N / PE, 220 / 230 / 240V						
AC Voltage Range	154 - 276V						
THDi	< 3%						
Frequency	50 / 45-55Hz; 60 / 55-65Hz						
Adjustable Power Factor	0.8 leading...0.8 lagging						
DC Current Injection	< 0.5% In						
Back-Up(AC Output)							
Nominal Output Power	3,000VA	3,600VA	4,000VA	4,600VA	5,000VA	6,000VA	8,000VA
Max. Continues Output Apparent Power	3,300VA	4,000VA	4,400VA	5,060VA	5,500VA	6,600VA	8,000VA
Peak Output Power	4,500W; 10s	5,400W; 10s	6,000W; 10s	6,900W; 10s	7,500W; 10s	9,000W; 10s	9,600W; 10s
Max. Output Current	15.0A	18.0A	20.0A	23.0A	25.0A	30.0A	36.3A
Switch Time	< 10ms						
Battery							
Battery Type	LiFePO4						
Battery Voltage Range	80 - 490V						
Max. Charge/Discharge Current	35A						
Max. Charge/Discharge Power	8,000W						
Efficiency							
Max. Efficiency	98.60%						
European Weighted Efficiency	98.20%						
MPPT Efficiency	99.90%						
Battery Charge/ Discharge Efficiency	97.50%						
Protection							
DC Insulation Resistance Detection	Yes						
Residual Current Monitoring	Yes						
DC Reverse Polarity Protection	Yes						
DC/AC Surge Protection	Type II						
DC Switch	Yes						
Anti-islanding Protection	Yes						
AC Over Current Protection	Yes						
AC Short-circuit Protection	Yes						
AC Over Voltage Protection	Yes						
Grounded Fault Detection	Yes						
General Data							
Operating Temperature Range	-25 to + 60°C						
Relative Operating Humidity	0 - 100 %RH						
Max. Operating Altitude	4,000m						
Cooling	Natural Cooling						
Display	LED / App / Web						
Communication	CAN / RS485 / WIFI / 4G / LAN						
Weight	20kg						
Dimensions (W*H*D)	522*416*1776mm						
Degree of Protection	IP65						
Mounting	Wall Mounted						

HYBRID INVERTER

HYX-H5K/6K/8K/ 10K/12K-HT



Safe & Reliable

- Type II DC/AC surge protection, lightning-proof
- 300m AFCI detection with 0.5s rapid shutdown
- IP65, C4 salt spray resistance
- PV optimizers compatible, module-level shutdown

Convenient & User-Friendly

- Compact design, 30-minute quick installation
- App-enabled quick setup, simple and efficient
- Intelligent layout with rapid module-level visualization
- UPS-grade seamless on/off-grid switching

Profitable & Efficient

- Start-up of 160V, wide MPPT range for higher revenue
- 160% overload capacity, 150% instant off-grid overload
- 18A design, 35A battery fast charging/discharging

Smart & Manageable

- Intelligent IV diagnostics for precise fault identification
- Module-level monitoring for precise fault positioning
- Scenario-based app with real-time energy monitoring
- Intelligent control for generators and heat pumps

Product Model	HYX-H5K-HT	HYX-H6K-HT	HYX-H8K-HT	HYX-H10K-HT	HYX-H12K-HT
PV Input					
Max. Array Power	10,000W	12,000W	16,000W	20,000W	24,000W
Max. Input Power	5,000W / 3,000W	6,000W / 4,000W	6,400W / 6,400W	6,400W / (4,800W/4,800W)	6,400W / (6,400W/6,400W)
Max. Input Voltage				1,000V	
Start-up Voltage				160V	
MPPT Operating Voltage Range				140 - 980V	
Max. Input Current	36A (18 / 18)			54A (18 / 18*2)	
Max. Short-circuit Current	60A (30 / 30)			90A (30 / 30*2)	
Number of MPPTs	2				
PV input number(Number of String Per MPPT)	2 (1 / 1)			3 (1 / 2)	
AC Input / Output					
Nominal Output Power	5,000W	6,000W	8,000W	10,000W	12,000W
Max. Output Apparent Power	5,500VA	6,600VA	8,800VA	11,000VA	13,200VA
Max. Input Apparent Power	11,000VA	13,200VA	17,600VA	22,000VA	26,400VA
Nominal Output Voltage	3 / N / PE, 220 / 380V, 230 / 400V, 240 / 415V				
Max. Output Current	8.4A	10A	13.4A	16.7A	20A
Max. Input Current	16.7A	20A	26.7A	33.4A	40A
Nominal Output Current	7.6A	9.1A	12.2A	15.2A	18.2A
THDi	< 3%				
Frequency	45-55Hz; 5-65Hz				
Adjustable Power Factor	0.8 leading...0.8 lagging				
DC Current Injection	< 0.5% In				
Back-Up(AC Output)					
Nominal Output Power	5,000VA	6,000VA	8,000VA	10,000VA	12,000VA
Max. Continues Output Apparent Power	5,500VA	6,600VA	8,800VA	11,000VA	13,200VA
Peak Output Power	7,500W; 10s	9,000W; 10s	12,000W; 10s	15,000W; 10s	15,000W; 10s
Nominal Output Current	7.6A	9.1A	12.2A	15.2A	18.2A
Max. Output Current	11.4A	13.7A	18.2A	22.8A	27.3A
Switch Time	< 10ms				
Battery					
Battery Type	LiFePO4				
Battery Voltage Range	150 - 600V				
Max. Charge/Discharge Current	40A				
Max. Charge/Discharge Power	5,500W	6,600W	8,800W	11,000W	13,200W
Efficiency					
Max. Efficiency	98.60%				
European Weighted Efficiency	98.20%				
MPPT Efficiency	99.90%				
Battery Charge/ Discharge Efficiency	97.50%				
Protection					
DC Insulation Resistance Detection	Yes				
Residual Current Monitoring	Yes				
DC Reverse Polarity Protection	Yes				
DC/AC Surge Protection	Type II				
DC Switch	Yes				
Anti-islanding Protection	Yes				
AC Over Current Protection	Yes				
AC Short-circuit Protection	Yes				
AC Over Voltage Protection	Yes				
Grounded Fault Detection	Yes				
General Data					
Operating Temperature Range	-30 to + 60°C				
Relative Operating Humidity	0 - 100 %RH				
Max. Operating Altitude	4,000m				
Cooling	Natural Cooling				
Display	LED / App / Web				
Communication	CAN / RS485 / WIFI / 4G / LAN				
Weight	34kg				
Dimensions (W*H*D)	542*478*186mm				
Degree of Protection	IP65				
Mounting	Wall Mounted				

HYBRID INVERTER

HYX-H15K/20K/ 25K-HT



Safe & Reliable

- Type II DC/AC surge protection, lightning-proof
- 300mA AFCI detection with 0.5s rapid shutdown
- IP65, C4 salt spray resistance
- PV optimizers compatible, module-level shutdown

Convenient & User-Friendly

- Compact design, 30-minute quick installation
- App-enabled quick setup, simple and efficient
- Intelligent layout with rapid module-level visualization
- UPS-grade seamless on/off-grid switching

Profitable & Efficient

- Start-up of 160V, wide MPPT range for higher revenue
- 160% overload capacity, 150% instant off-grid overload
- 20A design, 60A battery fast charging/discharging

Smart & Manageable

- Intelligent IV diagnostics for precise fault identification
- Module-level monitoring for precise fault positioning
- Scenario-based app with real-time energy monitoring
- Intelligent control for generators and heat pumps

Product Model	HYX-H15K-HT	HYX-H20K-HT	HYX-H25K-HT
PV Input			
Max. Array Power	30,000W	40,000W	50,000W
Max. Input Power	(6,000W/6,000W) / (6,000W/6,000W)	(8,000W/8,000W) / (8,000W/8,000W)	(10,000W/10,000W) / (10,000W/10,000W)
Max. Input Voltage		1,100V	
Start-up Voltage		160V	
MPPT Operating Voltage Range		140 - 1,000V	
Max. Input Current		80A (20*2 / 20*2)	
Max. Short-circuit Current		120A (30*2 / 30*2)	
Number of MPPTs		2	
PV input number(Number of String Per MPPT)		4 (2 / 2)	
AC Input / Output			
Nominal Input / Output Apparent Power	31,500VA / 15,000VA	42,000VA / 20,000VA	52,500VA / 25,000VA
Max. Input / Output Apparent Power	33,000VA / 16,500VA	44,000VA / 22,000VA	55,000VA / 27,500VA
Nominal Input / Output Current	47.8A / 22.8A	63.7A / 30.4A	79.5A / 37.9A
Max. Input / Output Current	50.0A / 25.0A	66.7A / 33.4A	83.4A / 41.7A
Output Voltage Range		3 / N / PE, 220 / 380V, 230 / 400V, 240 / 415V	
Nominal Output Voltage		< 3%	
THDi		304 - 476V	
Frequency		50 / 60Hz	
Adjustable Power Factor		0.8 leading...0.8 lagging	
DC Current Injection		< 0.5% In	
Back-Up(AC Output)			
Nominal Output Power	15,000W	20,000W	25,000W
Max. Continuous Output Apparent Power	16,500VA	22,000VA	27,500VA
Peak Output Power	22,500W; 10s	30,000W; 10s	30,000W; 10s
Nominal Output Current	22.8A	30.4A	37.9A
Max. Output Current	34.1A	45.5A	56.9A
Switch Time		< 10ms	
Battery			
Battery Type		LiFePO4	
Battery Voltage Range		150 - 600V	
Max. Charge/Discharge Current		60A	
Max. Charge/Discharge Power	16,500W	22,000W	27,500W
Efficiency			
Max. Efficiency		98.60%	
European Weighted Efficiency		98.20%	
MPPT Efficiency		99.90%	
Battery Charge/ Discharge Efficiency		97.70%	
Protection			
DC Insulation Resistance Detection		Yes	
Residual Current Monitoring		Yes	
DC Reverse Polarity Protection		Yes	
DC/AC Surge Protection		Type II	
DC Switch		Yes	
Anti-islanding Protection		Yes	
AC Over Current Protection		Yes	
AC Short-circuit Protection		Yes	
AC Over Voltage Protection		Yes	
Grounded Fault Detection		Yes	
General Data			
Operating Temperature Range		-30 to + 60°C	
Relative Operating Humidity		0 - 100 %RH	
Max. Operating Altitude		4,000m	
Cooling	Natural Cooling	Fan Cooling	Fan Cooling
Display		LED / App / Web	
Communication		CAN / RS485 / PLC / WIFI / 4G / LAN	
Weight		45kg	
Dimensions (W*H*D)		658*523*220mm	
Degree of Protection		IP65	
Mounting		Wall Mounted	







C&I PV and ESS Solution

Overview

HYXiPOWER C&I PV and ESS Solution combines PV generation and storage systems to enable self-consumption, peak shaving, and Time-of-use (TOU) arbitrage. It optimizes energy use, stores electricity during low-price periods, and releases it during peak times, reducing electricity costs. Supporting both grid-connected and off-grid modes, it suits areas with unstable grids or price fluctuations. The system uses high-safety lithium iron phosphate batteries for stable, efficient operation, driving both energy savings and economic benefits.

Highlight

-  **Safe and Reliable**
 - Superior algorithms to ensure equipment stability
 - Safeguard system operation during off-grid
-  **High Efficiency**
 - Meeting daytime power needs, reducing reliance on the grid
 - Surplus electricity can be sold to the grid, maximizing returns
-  **Eco-Friendly**
 - Reduce carbon emissions
-  **Intelligent O&M**
 - Real-time monitoring, remote maintenance
 - One-stop O&M interface

STRING INVERTER

HYX-S29K9/30K/33K/ 36K/40K/50K-T



Safe & Reliable

- IP66, 1,400+ cumulative rigorous tests
- PV optimizers compatible, module-level shutdown
- Type II DC/AC surge protection, lightning-proof
- 300m AFCI detection with 0.5s rapid shutdown

Convenient & User-Friendly

- Compact and lightweight design, plug-and-play installation
- App-based quick setup
- Intelligent layout with rapid module-level visualization

Profitable & Efficient

- 40A design, dynamic MPPT efficiency of 99.9%
- Built-in PID repair, improving overall system performance
- AI dynamic MPPT, boosting power generation by 5%

Smart & Manageable

- Module-level monitoring for precise fault positioning
- Intelligent IV diagnostics for precise fault identification
- Real-time monitoring with OTA for online maintenance

Product Model	HYX-S29K9-T	HYX-S30K-T	HYX-S33K-T	HYX-S36K-T	HYX-S40K-T	HYX-S50K-T
PV Input						
Max. Input Power	48kW	48kW	52.8kW	57.6kW	64kW	80kW
Max. Input Voltage	1,100V					
Nominal Input Voltage	600V					
Start-up Voltage	160V					
MPPT Operating Voltage Range	140 - 1,000V					
MPPT Full Load Voltage Range	450 - 850V					
Max. Input Current Per MPPT	40A					
Max. Input Current Per String	20A					
Max. Short-Circuit Current	50A					
Number of MPPT	3				4	
Max. Input Number Per MPPT	2 / 2 / 2				2 / 2 / 2 / 2	
AC Output						
Nominal Output Power	29.9kW	30kW	33kW	36kW	40kW	50kW
Max. Apparent Power	29.9kVA	33kVA	36.3kVA	39.6kVA	44kVA	55kVA
Nominal Output Voltage	3L / N / PE, 220 / 380V, 230 / 400V					
Nominal AC Grid Frequency	50 / 60Hz					
Nominal Output Current	45.4A, 380V 43.1A, 400V	45.6A / 380V 43.3A / 400V	50.2A / 380V 47.6A / 400V	54.7A / 380V 52A / 400V	60.8A / 380V 57.7A / 400V	76A / 380V 72.2A / 400V
Max. Output Current	45.4A, 380V 43.1A, 400V	50.2A / 380V 47.6A / 400V	55.2A / 380V 52.4A / 400V	60.2A / 380V 57.2A / 400V	66.9A / 380V 63.5A / 400V	83.6A / 380V 79.4A / 400V
Adjustable Power Factor	0.8 leading...0.8 lagging					
THDi	< 3%					
Efficiency						
Max. Efficiency	98.6%					
European Weighted Efficiency	98.1%					
MPPT Efficiency	99.9%					
Protection						
Active Anti-islanding Protection	Yes					
Residual Current Monitoring	Yes					
DC Reverse Polarity Protection	Yes					
DC Switch	Yes					
AC Short-circuit Protection	Yes					
AC Overvoltage Protection	Yes					
AC Overcurrent Protection	Yes					
DC Surge Protection	Type II					
AC Surge Protection	Type II					
Ground Fault Detection	Yes					
AFCI	Optional					
PID recovery	Optional					
General Data						
Operating Temperature Range	-30 to + 60°C					
Relative Operating Humidity	0 - 100 %RH					
Operating Altitude	4,000m					
Cooling	Smart Air Cooling					
Display	LED/ WLAN+App					
Communication	RS485 / 4G / WIFI / HPLC					
Weight	44kg					
Dimensions (W*H*D)	615*460*268.5mm					
Topology	Non-Isolated					
Degree of Protection	IP66					
Overvoltage Level	PV II / AC III					

String INVERTER

HYX-S50K/75K/99K9 100K/110K/125K-T2



Safe & Reliable

- Type II DC/AC surge protection, lightning-proof
- 300m AFCI detection with 0.5s rapid shutdown
- IP66, 1400+ cumulative rigorous tests

Convenient & User-Friendly

- Compact and lightweight, plug-and-play
- App-based quick setup, simple and efficient

Profitable & Efficient

- 40A input per MPPT
- Built-in PID repair, improving overall system performance
- AI dynamic MPPT, boosting power generation by 5%

Smart & Manageable

- Three-phase wiring sequence adaptive, easy system wiring
- Intelligent IV diagnostics for precise fault identification
- Real-time monitoring with OTA for online maintenance

Product Model	HYX-S50K-T2	HYX-S75K-T2	HYX-S99K9-T2	HYX-S100K-T2	HYX-S110K-T2	HYX-S125K-T2
DC Input (PV)						
Max. Input Voltage	1,100V					
Rated Input Voltage	650V					
Start-up Voltage	160V					
MPPT Operating Voltage Range	140V - 1,000V					
Max. Input Current per MPPT	40A					
Max. Input Current per String	20A					
Max. Short-circuit Current per MPPT	50A					
Number of MPPT	4	6	8	8	8	8
Number of Input	8	12	16	16	16	16
Max. Backfilling Current	0A					
AC Output						
AC Output Power	50kW	75kW	99.9kW	100kW	110kW	125kW
Max. Apparent Power	55kVA	82.5kVA	109.9kVA	110kVA	121kVA	125kVA
Rated Output Voltage	220/380V, 230/400V, 3L/N/PE					
AC Grid Frequency	50 / 60Hz					
Rated Output Current	75.9A/380V 72.1A/400V	113.9A/380V 108.2A/400V	151.9A/380V 144.3A/400V	151.9A/380V 144.3A/400V	167.1A/380V 158.7A/400V	189.9A/380V 180.4A/400V
Max. Output Current	83.5A/380V 79.4A/400V	125.3A/380V 119.0A/400V	167.1A/380V 158.7A/400V	167.1A/380V 158.7A/400V	183.8A/380V 174.6A/400V	189.9A/380V 180.4A/400V
Adjustable Power Factor	> 0.99 / 0.8 leading...0.8 lagging					
THDi	3%					
Efficiency						
Max. Efficiency	98.5%					
European Weighted Efficiency	98.0%					
MPPT Efficiency	99.9%					
Protection						
Active Anti-islanding Protection	Yes					
Residual Current Monitoring	Yes					
DC Reverse Polarity Protection	Yes					
DC Switch	Yes					
AC Short-Circuit Protection	Yes					
AC Overvoltage Protection	Yes					
AC Overcurrent Protection	Yes					
DC Surge Protection	Type II					
AC Surge Protection	Type II					
AFCI	Optional					
PID Recovery	Optional					
General Data						
Operating Temperature Range	-30 to + 60°C					
Relative Operating Humidity	0 ~ 100 %RH					
Operating Altitude	4,000m					
Cooling	Smart Air Cooling					
Display	LED+APP					
Communication	RS485 / 4G / WIFI / HPLC					
Weight	95kg					
Dimensions (W*H*D)	880*760*340mm					
Topology	Non-Isolated					
Degree of Protection	IP66					

Preliminary

AIR COOLING ESS

HYX-EF215P2

HYX-EF215P2-S



Extreme Performance, More Grid Friendly

- Supports 8 units parallel on grid, system can cover 100kW/215kWh~800kW/1.72MWh
- Single unit supports seamless switching, off-grid switching time ≤ 20 ms
- Three-phase four-bridge arm architecture supports single-phase 100% unbalanced load function
- PCS supports high and low penetration, island, and black start, support reactive power compensation, harmonic treatment

Safety & Reliable Performance

- Multi-level fire protection system
- Battery compartment and electrical compartment are isolated
- Certification: UN38.3, CE, IEC62619, 1.2m drop test, IEC 62477, IEC 61000

Multi-strategy Applications

- Integration of EMS inside
- Support peak shaving and valley filling, demand control, emergency backup power supply and other power consumption strategies
- Support MQTT protocol and IEC104 protocol, can participate in peak and frequency modulation

Easy to Install & Maintain

- Pre-installation and pre-test are available at the factory, Quick on-site construction wiring installation
- Support hoisting/fork construction methods
- Modular design, maintenance worry-free
- Remote O&M management, support WEB, Cloud & APP

Product Model	HYX-EF215P2	HYX-EF215P2-S
Battery Rating		
Battery Type	LiFePO4	
Cell Capacity	280Ah	
Battery Configuration	1P240S	
Nominal Voltage/Voltage Range	768/672-864V	
Nominal Capacity	215kWh	
Maximum Charge/Discharge Current	280A	
Nominal Charge/Discharge Current	140A	
Calendar Life	6,000 / 70%EOL (25 \pm 2 $^{\circ}$ C, 0.5P)	
AC Grid Rating		
Nominal Input/Output Voltage	3L/N/PE, 400/230V	
Nominal Frequency	50/60Hz	
Nominal Input/Output Power	100kW	
Max. Input/Output Apparent Power	110kVA	
Nominal Input/Output AC Current	145A	
Max. Input/Output AC Current	160A	
Power Factor	-0.99% - +0.99%, At nominal power	
AC Backup Rating		
Nominal Voltage	/	3L/N/PE, 400/230V
Nominal Frequency	/	50/60Hz (-2.5 to +2.5Hz)
Max. Output AC Current	/	160A
Max. Active Power	/	100kW
Power Factor	/	-0.99% - +0.99%, At nominal Power
General Data		
System Parallel Units	8	
Operating Temperature Range	-20 to 50 $^{\circ}$ C	
Operating Humidity Range	0 - 95%RH	
Noise	≤ 75 dB	
Dimensions (W*H*D)	1730*2200*1170mm	
Weight	3000kg	
Protection Degree	IP54	
Cooling Method	Air Cooling	
Fire Protection Method	Aerosol Fire Suppression	
Max. Operating Altitude	$\leq 2,000$ m	
Networking Mode	WIFI / LAN / 4G(Optional)	

AIR COOLING ESS

HYX-EF215P2-M

HYX-EF215P2-MS



Ultimate Performance, Light Storage Fusion

- Integrated photovoltaic input function
- Supports 8 units parallel on grid, system can cover 100kW/215kWh-800kW/1.72MWh
- Supports 4 units parallel off grid, system can cover 100kW/215kWh-400kW/860kWh
- Single unit supports seamless switching, off-grid switching time ≤ 20 ms
- Three-phase four-bridge arm architecture supports single-phase 100% unbalanced load function
- Support pure grid connection, pure off-grid, and combined operation

Safety & Reliable Performance

- Multi-level fire protection system
- Battery compartment and electrical compartment are isolated
- Certification: UN38.3, CE, IEC62619, 1.2m drop test, IEC 62477, IEC 61000

Multi-strategy Applications

- Integration of EMS inside
- Support peak shaving and valley filling, demand control, emergency backup power supply and other power consumption strategies
- Support MQTT protocol and IEC104 protocol, can participate in peak and frequency modulation

Easy to Install & Maintain

- Pre-installation and pre-test are available at the factory, Quick on-site construction wiring installation
- Support hoisting/fork construction methods
- Modular design, maintenance worry-free
- Remote O&M management, support WEB, Cloud & APP

Product Model	HYX-EF215P2-M	HYX-EF215P2-MS
Battery Rating		
Battery Type	LiFePO4	
Cell Capacity	280Ah	
Battery Configuration	1P240S	
Nominal Voltage/Voltage Range	768/672-864V	
Nominal Capacity	215kWh	
Maximum Charge/Discharge Current	280A	
Nominal Charge/Discharge Current	140A	
Calendar Life	6,000 / 70%EOL (25 \pm 2 $^{\circ}$ C, 0.5P)	
PV Rating		
Maximum Input Voltage	900V	
MPPT Voltage Range	310-650V	
Max. Input Current Per MPPT Channel	165A	
Isc Current Per MPPT Channel	1800A	
MPPT Channels	2	
Rated Power Per MPPT Channel	50kW	
AC Grid Rating		
Nominal Input/Output Voltage	3L/N/PE, 400/230V	
Nominal Frequency	50/60Hz	
Nominal Input/Output Power	100kW	
Max. Input/Output Apparent Power	110kVA	
Nominal Input/Output AC Current	145A	
Max. Input/Output AC Current	160A	
Power Factor	-0.99% ~ +0.99%, At nominal power	
AC Backup Rating		
Nominal Voltage	/	3L/N/PE, 400/230V
Nominal Frequency	/	50/60Hz (-2.5 to +2.5Hz)
Max. Output AC Current	/	160A
Max. Active Power	/	100kW
Power Factor	/	-0.99% ~ +0.99%, At nominal Power
General Data		
System Parallel Units	8 (On-grid), 4 (Off-grid)	
Operating Temperature Range	-20 to 50 $^{\circ}$ C	
Operating Humidity Range	0 - 95%RH	
Noise	≤ 75 dB	
Dimensions (W*H*D)	1730*2200*1170mm	
Weight	3000kg	
Protection Degree	IP54	
Cooling Method	Air Cooling	
Fire Protection Method	Aerosol Fire Suppression	
Max. Operating Altitude	$\leq 2,000$ m	
Networking Mode	WIFI / LAN / 4G(Optional)	

LIQUID COOLING ESS

HYX-EL372P2-DC

HYX-EL418P2-DC



Ultimate Safety

- A+ grade cells with automotive-grade standards
- AI thermal balance, $\leq 2^{\circ}\text{C}$ cells temperature difference
- AI diagnostics with triple fire protection for system safety

Intelligent and Efficient

- Supports multi-unit parallel networking
- Built-in communication for safety management and data access

Convenient and Flexible

- Plug-and-play, flexible, easy installation

Product Model	HYX-EL372P2-DC	HYX-EL418P2-DC
Battery Side		
Cell Capacity	280Ah	314Ah
Battery Configuration		1P260S
Nominal Voltage		1,331.2V
Operating Voltage Range		1,164.8 - 1,497.6V
Nominal Capacity	372.736kWh	417.997kWh
Supported Charge & Discharge Rate		$\leq 0.5\text{C}$
Protection		
Overvoltage Protection		Yes
Overcurrent Protection		Yes
Short-circuit Protection		Yes
Over-temperature Protection		Yes
General Data		
Max. Efficiency	$\geq 94\%$ (Excluding self consumption)	
Operating Temperature Range	-20 to 50°C	
Operating Humidity Range	0 - 95%RH	
Noise	$\leq 75\text{dB}$	
Dimensions (W*H*D)	1420*2300*1350mm	
Weight	3,200kg	3,500kg
Protection Degree	IP55	
Cooling Method	Liquid Cooling	
Fire Protection Method	Perfluoro+Pack-level+Active Forewarning	
Max. Operating Altitude	$\leq 2,000\text{m}$	
Networking Mode	LAN	

HYBRID ESS CABINET

50-125kW

215kWh



Safe & Reliable

- A+ grade cells with automotive-grade standard
- Five-level safety design
- 300m AFCI detection with 0.5s rapid shutdown
- Support three-phase unbalance output
- IP66 for inverter, IP55 for cabinet

Convenient & User-Friendly

- Compact & Lightweight Design, pre-installed for easy installation
- Flexible parallel connection of cabinets
- App-based quick setup, simple and efficient

Profitable & Efficient

- Innovative liquid cooling technology, extend battery life by 20%
- PV-ESS integrated, lower system cost
- AI dynamic MPPT, boosting power generation by 5%
- DC coupled solution, higher system efficiency

Smart & Manageable

- Three-phase wiring sequence adaptive, easy system wiring
- Support on&off grid switching, suitable for various application scenarios
- Real-time monitoring with OTA for online maintenance

Product Model	HYX-H50K-ET	HYX-H75K-ET	HYX-H99K9-ET
DC Input (PV)			
Max. Input Voltage		1,100V ¹	
Rated Input Voltage		650V	
Start-up Voltage		160V	
MPPT Operating Voltage Range		140V - 1,000V	
Max. Input Current per MPPT		40A	
Max. Input Current per String		20A	
Max. Short-circuit Current per MPPT		50A	
Number of MPPT	4	6	8
Number of Input	8	12	16
Max. Backfilling Current		0A	
DC Input (Battery)			
Rated Input Voltage		768V	
Battery Voltage Range		600V - 950V	
Max. Charge/Discharge Current	80.8A	121.3A	161.7A
AC Output			
AC Output Power	50kW	75kW	99.9kW
Max. Apparent Power	55kVA	82.5kVA	109.9kVA
Rated Output Voltage		220/380V, 230/400V, 3L/N/PE	
AC Grid Frequency		50 / 60Hz	
Rated Output Current	75.9A/380V 72.1A/400V	113.9A/380V 108.2A/400V	151.9A/380V 144.3A/400V
Max. Output Current	83.5A/380V 79.4A/400V	125.3A/380V 119.0A/400V	167.1A/380V 158.7A/400V
Adjustable Power Factor		> 0.99 / 0.8 leading...0.8 lagging	
Three Phase Unbalanced Output		100% Unbalanced Output	
THDi		< 3%	
Efficiency			
Max. Efficiency		98.5%	
European Weighted Efficiency		98.0%	
MPPT Efficiency		99.9%	
Protection			
Active Anti-islanding Protection		Yes	
Residual Current Monitoring		Yes	
DC Reverse Polarity Protection		Yes	
DC Switch		Yes	
DC Overvoltage Protection		Yes	
DC Overcurrent Protection		Yes	
AC Overfrequency/Underfrequency Protection		Yes	
AC Short-Circuit Protection		Yes	
AC Overvoltage Protection		Yes	
AC Overcurrent Protection		Yes	
DC Surge Protection		Type II	
AC Surge Protection		Type II	
Ground Fault Detection		Yes	
AFCI		Optional	
PID Recovery		Optional	
General Data			
Operating Temperature Range		-30 to + 60°C	
Relative Operating Humidity		0 - 100% RH	
Max. Operating Altitude		4,000m	
Cooling		Smart Air Cooling	
Display		LED+APP	
Communication		RS485 / 4G / WIFI / HPLC	
Weight		95kg	
Dimensions (W*H*D)		880*760*340mm	
Topology		Non-Isolated	
Degree of Protection		IP66	

¹: When connected to the battery cabinet, the maximum PV input voltage is 650V.

Hybrid ESS Cabinet **Inverter**
Technical Specifications

Hybrid ESS Cabinet **Battery**
Technical Specifications

Product Model	HYX-H100K-ET	HYX-H110K-ET	HYX-H125K-ET
DC Input (PV)			
Max. Input Voltage		1,100V ¹	
Rated Input Voltage		650V	
Start-up Voltage		160V	
MPPT Operating Voltage Range		140V - 1,000V	
Max. Input Current per MPPT		40A	
Max. Input Current per String		20A	
Max. Short-circuit Current per MPPT		50A	
Number of MPPT		8	
Number of Input		16	
Max. Backfilling Current		0A	
DC Input (Battery)			
Rated Input Voltage		768V	
Battery Voltage Range		600V - 950V	
Max. Charge/Discharge Current	161.7A	1779A	183.8A
AC Output			
AC Output Power	100kW	110kW	125kW
Max. Apparent Power	110kVA	121kVA	125kVA
Rated Output Voltage		220/380V, 230/400V, 3L/N/PE	
AC Grid Frequency		50 / 60Hz	
Rated Output Current	151.9A/380V 144.3A/400V	167.1A/380V 158.7A/400V	189.9A/380V 180.4A/400V
Max. Output Current	167.1A/380V 158.7A/400V	183.8A/380V 174.6A/400V	189.9A/380V 180.4A/400V
Adjustable Power Factor		> 0.99 / 0.8 leading...0.8 lagging	
Three Phase Unbalanced Output		100% Unbalanced Output	
THDi		< 3%	
Efficiency			
Max. Efficiency		98.5%	
European Weighted Efficiency		98.0%	
MPPT Efficiency		99.9%	
Protection			
Active Anti-islanding Protection		Yes	
Residual Current Monitoring		Yes	
DC Reverse Polarity Protection		Yes	
DC Switch		Yes	
DC Overvoltage Protection		Yes	
DC Overcurrent Protection		Yes	
AC Overfrequency/Underfrequency Protection		Yes	
AC Short-Circuit Protection		Yes	
AC Overvoltage Protection		Yes	
AC Overcurrent Protection		Yes	
DC Surge Protection		Type II	
AC Surge Protection		Type II	
Ground Fault Detection		Yes	
AFCI		Optional	
PID Recovery		Optional	
General Data			
Operating Temperature Range		-30 to + 60°C	
Relative Operating Humidity		0 - 100% RH	
Max. Operating Altitude		4,000m	
Cooling		Smart Air Cooling	
Display		LED+APP	
Communication		RS485 / 4G / WIFI / HPLC	
Weight		95kg	
Dimensions (W*H*D)		880*760*340mm	
Topology		Non-Isolated	
Degree of Protection		IP66	

1: When connected to the battery cabinet, the maximum PV input voltage is 650V.

Preliminary

Product Model	HYX-BOA215
Technical Parameter	
Battery Type	LiFePO4
Battery Module Capacity	14.336kWh
Battery Module Nominal Voltage	51.2V
Battery Module Qty In Series	15
System Nominal Voltage	768V
System Operating Voltage	672V - 864V
System Capacity	215kWh
Charge/Discharge Current	Recommend: 140A / Maximum: 170A (60s)
Calendar Life	≥6000 (25±2°C, 0.5C / 0.5C, 70%EOL)
General Parameter	
Operating Temperature Range	Charge: 0 to +55°C / Discharge: -20 to +55°C
Operating Humidity Range	0 - 95% RH
Max. Operating Altitude	≤2000m
Cooling Method	Smart Air Cooling
Protection Degree	IP54
Dimensions (W*H*D)	1440*2200*1170mm
Weight	2700kg
Communication	CAN
Installation Location	Outdoor
Fire Protection Method	Aerosol Fire Suppression
Networking Mode	WIFI / LAN

Preliminary



Utility PV and ESS Solution

Overview

HYXiPOWER Utility PV and ESS Solution incorporates advanced design to enhance output power and conversion efficiency, reducing switching losses and utilizing AI-driven dynamic MPPT to boost power generation. The system ensures ultimate reliability with temperature monitoring, overheat protection, and smart string disconnection for fast shutdown, all while undergoing rigorous testing for durability.

It supports grid-friendly power quality with low harmonic distortion, and smart management enables fault detection accuracy, real-time monitoring, and remote maintenance support. Safety is prioritized through multi-layer electrical protection, AI thermal balance, and flame-retardant features, while precision monitoring ensures early warning and fire response.

Highlight



Ultimate Safety

- Multi-layer electrical protection from cells to system
- Terminal temperature monitoring with overheat protection



Grid-Friendly

- Full power feed in grid at SCR<1.2
- THDi <1% for improved power quality



Highly Profitable

- 75A design for higher output power
- AI dynamic MPPT, boosting power generation by 5%



Efficient Management

- Real-time monitoring with OTA for online maintenance
- Intelligent IV curve scanning with 99% fault detection accuracy*

*This feature will be supported by all future products

STRING INVERTER

HYX-S250K-HT

HYX-S305K-HT



Highly Profitable

- 75A design for higher output power
- 14% less switching loss, 99.03% conversion efficiency
- AI dynamic MPPT, boosting power generation by 5%

Ultimately Reliable

- Terminal temperature monitoring with overheat protection
- Smart string disconnection, <25ms fast shutdown
- IP66, 1400+ cumulative rigorous tests

Grid-Friendly

- Full power feed in grid at SCR<1.2
- THDi <1% for improved power quality

Smart & Manageable

- Intelligent IV curve scanning with 99% fault detection accuracy
- Real-time monitoring with OTA for online maintenance

Product Model	HYX-S250K-HT	HYX-S305K-HT
PV Input		
Max. Input Voltage	1,500V	
Nominal Input Voltage	1,080V	
Start-up Voltage	500V	
MPPT Operating Voltage Range	480 - 1,500V	
Max. Input Current Per MPPT	75A	
Max. Short-Circuit Current	120A	
Number of MPPT	6	
Max. Input Number Per MPPT	30 (Optional: 24)	
AC Output		
Nominal Output Power	250kW	305kW
Max. Apparent Power	275kVA	305kVA
Nominal Output Voltage	3L / PE, 800V	
Nominal AC Grid Frequency	50Hz / 60Hz	
Nominal Output Current	180.4A	220A
Max. Output Current	198.5A	220A
Adjustable Power Factor	>0.99 (0.8 leading...0.8 lagging)	
THDi	< 3%	
Efficiency		
Max. Efficiency	≥99.03%	
European Weighted Efficiency	≥98.8%	
MPPT Efficiency	99.9%	
Protection		
Active Anti-islanding Protection	Yes	
Residual Current Monitoring	Yes	
DC Reverse Polarity Protection	Yes	
DC Switch	Yes	
AC Short-Circuit Protection	Yes	
AC Overvoltage Protection	Yes	
AC Overcurrent Protection	Yes	
DC Surge Protection	Type II	
AC Surge Protection	Type II	
Ground Fault Detection	Yes	
Smart String-level Disconnection	Yes	
Smart Connector-level Detection	Yes	
General Data		
Operating Temperature Range	-35 to + 60°C	
Relative Operating Humidity	0 - 100 %RH	
Operating Altitude	5,000m	
Cooling	Smart Air Cooling	
Display	LED / WLAN+App	
Communication	RS485 / HPLC	
Weight	130kg	
Dimensions (W*H*D)	1120*820*380mm	
Topology	Non-Isolated	
Degree of Protection	IP66	
Overvoltage Level	PV II / AC III	

STRING INVERTER HYX-S320K-HT



Highly Profitable

- 75A design for higher output power
- 14% less switching loss, 99.03% conversion efficiency
- AI dynamic MPPT, boosting power generation by 5%

Ultimately Reliable

- Terminal temperature monitoring with overheat protection
- Smart string disconnection, <25ms fast shutdown
- IP66, 1400+ cumulative rigorous tests

Grid-Friendly

- Full power feed in grid at SCR<1.2
- THDi <1% for improved power quality

Smart & Manageable

- Intelligent IV curve scanning with 99% fault detection accuracy
- Real-time monitoring with OTA for online maintenance

Product Model	HYX-S320K-HT
PV Input	
Max. Input Voltage	1,500V
Nominal Input Voltage	1,080V
Start-up Voltage	500V
MPPT Operating Voltage Range	480 - 1,500V
Max. Input Current per MPPT	75A
Max. Short-circuit Current	120A
Number of MPPT	6
Max. Input Number per MPPT	30 (Optional: 24)
AC Output	
Nominal Output Power	320kW
Max. Apparent Power	352kVA
Nominal Output Voltage	3L / PE, 800V
Nominal AC Grid Frequency	50Hz / 60Hz
Nominal Output Current	230.9A
Max. Output Current	254A
Adjustable Power Factor	>0.99 (0.8 leading...0.8 lagging)
THDi	< 3%
Efficiency	
Max. Efficiency	≥99.03%
European Weighted Efficiency	≥98.8%
MPPT Efficiency	99.9%
Protection	
Active Anti-islanding Protection	Yes
Residual Current Monitoring	Yes
DC Reverse Polarity Protection	Yes
DC Switch	Yes
AC Short-Circuit Protection	Yes
AC Overvoltage Protection	Yes
AC Overcurrent Protection	Yes
DC Surge Protection	Type II
AC Surge Protection	Type II
Ground Fault Detection	Yes
Smart String-level Disconnection	Yes
Smart Connector-level Detection	Yes
General Data	
Operating Temperature Range	-35 to + 60°C
Relative Operating Humidity	0 - 100 %RH
Operating Altitude	5,000m
Cooling	Smart Air Cooling
Display	LED / WLAN+App
Communication	RS485 / HPLC
Weight	130kg
Dimensions (W*H*D)	1120*820*380mm
Topology	Non-Isolated
Degree of Protection	IP66
Overvoltage Level	PV II / AC III

STRING INVERTER HYX-S333K-HT



Highly Profitable

- 75A design for higher output power
- 14% less switching loss, 99.03% conversion efficiency
- AI dynamic MPPT, boosting power generation by 5%

Ultimately Reliable

- Terminal temperature monitoring with overheat protection
- Smart string disconnection, <25ms fast shutdown
- IP66, 1400+ cumulative rigorous tests

Grid-Friendly

- Full power feed in grid at SCR<1.2
- THDi <1% for improved power quality

Smart & Manageable

- Intelligent IV curve scanning with 99% fault detection accuracy
- Real-time monitoring with OTA for online maintenance

Product Model	HYX-S333K-HT
PV Input	
Max. Input Voltage	1,500V
Nominal Input Voltage	1,080V
Start-up Voltage	500V
MPPT Operating Voltage Range	480 - 1,500V
Max. Input Current per MPPT	75A
Max. Short-circuit Current	120A
Number of MPPT	6
Max. Input Number per MPPT	30 (Optional: 24)
AC Output	
Nominal Output Power	333kW
Max. Apparent Power	352kVA
Nominal Output Voltage	3L / PE, 800V
Nominal AC Grid Frequency	50Hz / 60Hz
Nominal Output Current	240.3A
Max. Output Current	254A
Adjustable Power Factor	>0.99 (0.8 leading...0.8 lagging)
THDi	< 3%
Efficiency	
Max. Efficiency	≥99.03%
European Weighted Efficiency	≥98.8%
MPPT Efficiency	99.9%
Protection	
Active Anti-islanding Protection	Yes
Residual Current Monitoring	Yes
DC Reverse Polarity Protection	Yes
DC Switch	Yes
AC Short-Circuit Protection	Yes
AC Overvoltage Protection	Yes
AC Overcurrent Protection	Yes
DC Surge Protection	Type II
AC Surge Protection	Type II
Ground Fault Detection	Yes
Smart String-level Disconnection	Yes
Smart Connector-level Detection	Yes
General Data	
Operating Temperature Range	-35 to + 60°C
Relative Operating Humidity	0 - 100 %RH
Operating Altitude	5,000m
Cooling	Smart Air Cooling
Display	LED / WLAN+App
Communication	RS485 / HPLC
Weight	130kg
Dimensions (W*H*D)	1120*820*380mm
Topology	Non-Isolated
Degree of Protection	IP66
Overvoltage Level	PV II / AC III

STRING INVERTER HYX-S350K-HT



Highly Profitable

- 75A design for higher output power
- 14% less switching loss, 99.03% conversion efficiency
- AI dynamic MPPT, boosting power generation by 5%

Ultimately Reliable

- Terminal temperature monitoring with overheat protection
- Smart string disconnection, <25ms fast shutdown
- IP66, 1400+ cumulative rigorous tests

Grid-Friendly

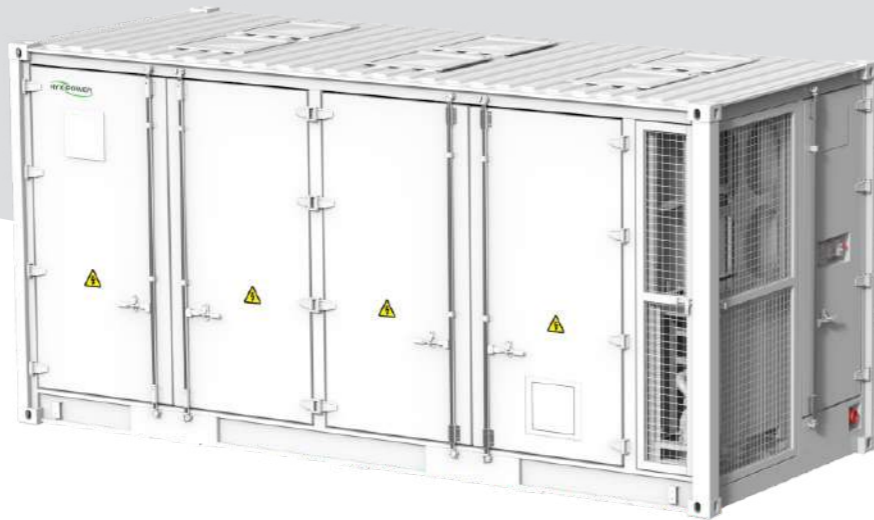
- Full power feed in grid at SCR<1.2
- THDi <3% for improved power quality

Smart & Manageable

- Intelligent IV curve scanning with 99% fault detection accuracy
- Real-time monitoring with OTA for online maintenance

Product Model	HYX-S350K-HT
PV Input	
Max. Input Voltage	1,500V
Nominal Input Voltage	1,080V
Start-up Voltage	500V
MPPT Operating Voltage Range	480 - 1,500V
Max. Input Current Per MPPT	75A
Max. Short-Circuit Current	120A
Number of MPP Trackers	6
Max. Input Number Per MPP Tracker	30 (Optional: 24)
AC Output	
Max. Output Power	352kW
Max. Apparent Power	352kVA
Nominal Output Voltage	3L / PE, 800V
Nominal AC Grid Frequency	50Hz / 60Hz
Nominal Output Current	230.9A
Max. Output Current	254A
Adjustable Power Factor	>0.99 (0.8 leading...0.8 lagging)
THDi	< 3%
Efficiency	
Max. Efficiency	≥99.03%
European Weighted Efficiency	≥98.8%
MPPT Efficiency	99.9%
Protection	
Active Anti-islanding Protection	Yes
Residual Current Monitoring	Yes
DC Reverse Polarity Protection	Yes
DC Switch	Yes
AC Short-Circuit Protection	Yes
AC Overvoltage Protection	Yes
AC Overcurrent Protection	Yes
DC Surge Protection	Type II
AC Surge Protection	Type II
Ground Fault Detection	Yes
Smart String-level Disconnection	Yes
Smart Connector-level Detection	Yes
General Data	
Operating Temperature Range	-35 to + 60°C
Relative Operating Humidity	0 - 100 %RH
Operating Altitude	5,000m
Cooling	Smart Air Cooling
Display	LED / WLAN+App
Communication	RS485 / HPLC
Weight	130kg
Dimensions (W*H*D)	1120*820*380mm
Topology	Non-Isolated
Degree of Protection	IP66
Overvoltage Level	PV II / AC III

CONTAINER ESS HYX-EL3000/4000/ 5000P2-DC



Ultimate Safety

- Multi-layer electrical protection from cells to system
- Six-sided flame retardant, triple fire protection design
- Precision monitoring system with early warning and fire response

Efficient Management

- System round-trip efficiency (RTE) $\geq 90\%$
- A+ grade cells with automotive-grade standards
- Energy-efficient iEMS with multi-site cloud management
- AI cells fault prediction for enhanced safety

Product Model	HYX-EL3000P2-DC	HYX-EL4000P2-DC	HYX-EL5000P2-DC
Battery Side			
Cell Capacity		314Ah LFP	
Battery Configuration	8P416S	10P416S	12P416S
Nominal Voltage		1,331.2V	
Operating Voltage Range		1,164.8 ~ 1,497.6V	
Nominal Capacity	3.34MWh	4.18MWh	5.01MWh
Supported Charge & Discharge Rate		$\leq 0.5C$	
Protection			
Overvoltage Protection		Yes	
Overcurrent Protection		Yes	
Short-circuit Protection		Yes	
Over-temperature Protection		Yes	
Emergency Stop Protection		Yes	
General Data			
Max. Efficiency		$\geq 90\%$ (include self-consumption)	
Operation Ambient Temperature Range		-30 to 55 °C	
Storage Temperature		-20 to 35 °C	
Operating Humidity Range		0 ~ 95%RH	
Noise		$\leq 80dB$	
Anti-corrosion Degree		C3/C4/C5 (optional)	
Dimensions (W*H*D)	6,058*2,896*2,438mm	6,058*2,896*2,438mm	6,058*2,896*2,438mm
Weight	33T	38T	43T
Protection Degree		IP55	
Cooling Method		Liquid Cooling	
Fire Protection Method		Aerosol + water suppression system	
Max. Operating Altitude		$\leq 2,000m$	
Networking Mode		LAN, RS485, CAN	

Preliminary

HYXI DCS

HYX-DCS-4G

HYX-DCS-WL



HYXI DMU

HYX-DMU-4G

HYX-DMU-W



Convenient & User-Friendly

- Up to 10 inverters connection
- Plug-and-play

Stable & Reliable

- Encrypted data transmission for security
- Supporting data recovery, preventing data loss

Smart & Manageable

- 4G, Wi-Fi and Ethernet communication capability
- On/off-site software updates, parameter configuration, and fault analysis

Product Model	HYX-DCS-4G	HYX-DCS-WL
General Data		
Max. Inverters Supported	10	
Data Acquisition Interval	5 mins	
Connection Interface	USB	
Ethernet Interface	/	10M/100M Ethernet
Installation	Plug-and-play	
Indicator	LED+App	
Dimensions (W*H*D)	122*41*33mm	144*41*33mm
Weight	64g	68g
Degree of Protection	IP66	
Power Consumption	2W	1W
Input Voltage	5V / 1A	
Wireless Parameter		
Wireless	4G:TDD-LTE, FDD-LTE 3G:SCDMA 2G:GSM/GPRS	WiFi:802.11b/g/n
Environment		
Operating Ambient Temperature	- 30 to +65°C	
Relative Humidity Range	0 ~ 100%RH, Non-condensing	
Storage Temperature Range	-40 to +70°C	

Convenient & User-Friendly

- Plug-and-play

Stable & Reliable

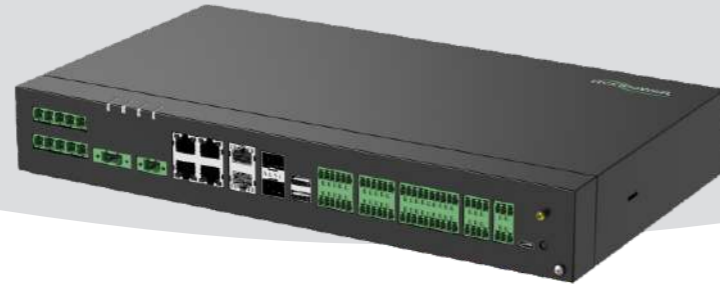
- Encrypted data transmission for security
- Local storage with resume capability, ensuring no data loss

Smart & Manageable

- 4G, Wi-Fi, and Ethernet communication capability
- On/off-site software updates, parameter configuration, and fault analysis

Product Model	HYX-DMU-W	HYX-DMU-4G
Communication to Microinverter		
Signal	Sub-1G	
Monitoring Data Limit From Solar Panels	400	
Communication to Hyxi Cloud		
Ethernet	RJ45*1, 100Mb/s	
Wireless	WiFi:802.11b/g/n	4G:TDD-LTE, FDD-LTE 3G:SCDMA 2G:GSM/GPRS
Data Acquisition Interval	5 min	
Power Supply (Adapter)		
Type	External adapter	
Adapter Input Voltage / Frequency	100 - 240V AC / 50 - 60Hz	
Adapter Output Voltage / Current	12V / 1A	
Power Consumption	1.5W	2.5W
General Data		
Operating Ambient Temperature	- 20 to +65°C	
Dimensions (W*H*D)	106*216*79mm (with base)	
Weight	320g	
Cooling	Natural Cooling	
Degree of Protection	IP20	
Installation Method	Desktop mounting / Wall mounting	

HYXi Logger



Convenient & User-Friendly

- Wall-mounted, rail-mounted, and drawer installation
- Built-in web interface with guided setup and one-click layout

Stable & Reliable

- TLS data transmission encryption for high security
- Dual-power redundancy ensuring system stability

Intelligent & Flexible

- Up to 150 inverters connection
- Compatible with multiple communication protocols

Product Model	HYXi Logger
Device Management	
Max. Inverters Supported	150
Communication Interface	
WAN	WAN x 2, 10 / 100 / 1,000 Mbps
LAN	LAN x 4, 10 / 100 / 1,000 Mbps
Optical Ethernet	SFP x 2, 100 / 1,000 Mbps
HPLC	PLC x 2, Max. Voltage 800V (±10%), 1,000 m
RS485	COM x 6
Analog Input	DI x 9 / DO x 4
Digital Input / Output	AI x 4
PT100 / PT1000	2
Active DO	x1, 12V, 0.1A
Communication Protocol	
Ethernet	Modbus-TCP, IEC 60870-5-104
RS485	Modbus-RTU, IEC 60870-5-103 (Standard), DL / T645
Power Supply	
AC Input Voltage/Frequency	100 ~ 277 Vac, 50 / 60 Hz
DC Output Voltage/Current	24Vdc, 1.25A
Power Consumption	Max. 18W
Interaction	
LED	LED x 4
Web	Embedded Web
USB	USB 3.0 x 2
General Data	
Operating Ambient Temperature	-35 to +60°C
Relative Humidity Range	5 - 95% RH
Degree of Protection	IP20
Operating Altitude	4000m
Dimensions (W*H*D)	60*380*240 mm (without mounting ears)
Weight	3kg
Installation Method	Wall Mounting, Rail Mounting, Tabletop Mounting

PV Array Controller Smart ECS



Convenient & User-Friendly

- Supports multiple protocols integration
- Compatible with devices with various protocols

Stable & Reliable

- IP65
- Industrial-grade design standards

Fast & Smart

- Embedded platform with one-click setup

Product Model	Smart ECS
Disposition	
Built-in Data Collector	HYXiLogger
RS485	Standard
HPLC	2
Built-in Switches	Optional, 2 Optical port, 6 Electrical port
Environmental Parameters	
Operating Temperature	-40 to +60°C
Operating Relative Humidity	0% ~ 100% RH
Maximum Working Altitude	5,000m
Electrical Parameters	
AC Input Voltage	100 V ~ 240 V, L / N (L)+ PE
HPLC AC Input Voltage	380 V ~ 800 V, 3Ph+FE
AC Input Frequency	50 / 60 Hz
Power Supply	24V DC power
Mechanical Parameters	
Inlet and Outlet	Down-in, down-out
Dimensions (W*H*D)	770*480*350mm
Weight	30kg
Ingress Protection	IP65
Installation	Brackets, poles, wall mounts

HYXiPOWER Smart Energy Platform



Ultimate Experience

- One-click cloud setup for seamless operation
- One-stop user view for more comprehensive data
- Scenario-oriented interface for precise information
- Multi-node, all-time-zone coverage for smoother access
- All-in-one user terminal, no more app switching

Ultimate Safety

- Comprehensive monitoring and proactive risk alerts
- Scalable cloud for stable millions of devices connectivity
- Robust IoT foundation to ensure cloud security

Efficient O&M

- Intelligent layout with rapid module-level visualization
- App/WEB sync, real-time control, multi-end operation
- Unified management, OTA updates, fast fault resolution
- Real-time data analysis for automated alerts

Comprehensive Intelligence

- 24/7 AI cells management for safety control
- One-click diagnostics for utility safety monitoring
- Intelligent IV diagnostics for precise fault positioning
- 24H intelligent TOU scheduling for maximum profit
- Power forecast for optimized energy scheduling
- Industry-specific model with integrated interaction

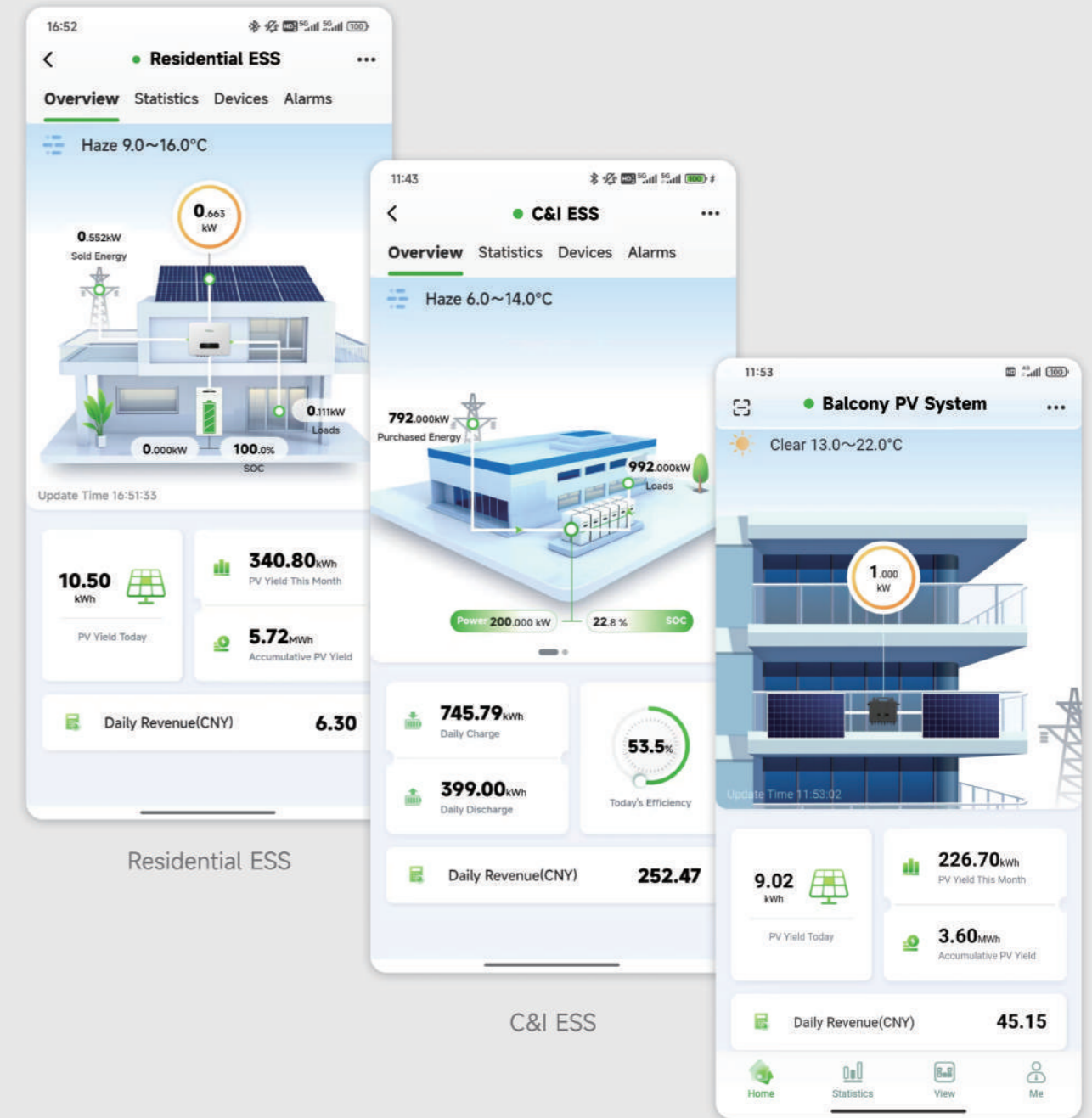
Open Ecosystem

- OpenAPI for platform-level cloud connectivity
- Customizable SaaS solution, empowering ecosystem partners
- Multi-mode virtual PV plant access for fast integration

- Multi-dimensional reports for efficient decision-making
- 24/7 intelligent sensing for 360° security
- Efficient smart control of heat pumps and generators

Scenario-Oriented Interface For Precise Information

Adapted for C&I ESS, Residential ESS, Balcony PV System, etc.



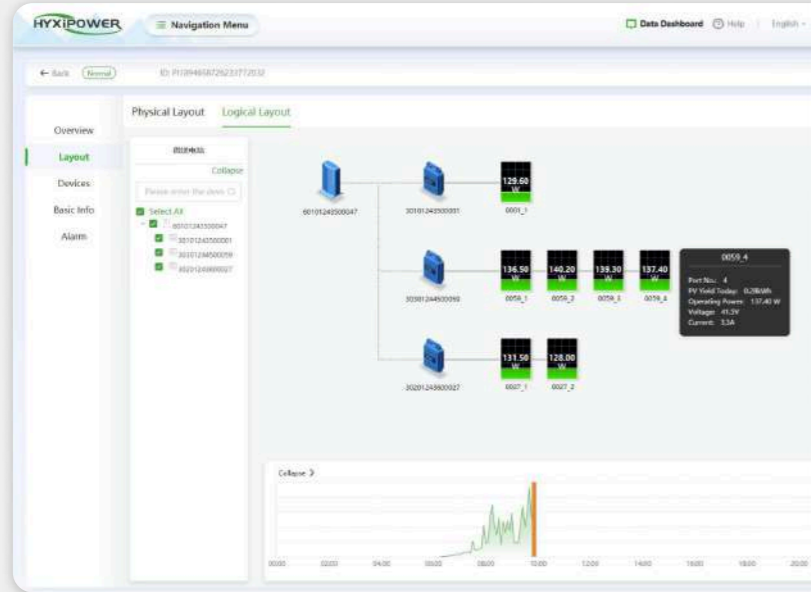
Residential ESS

C&I ESS

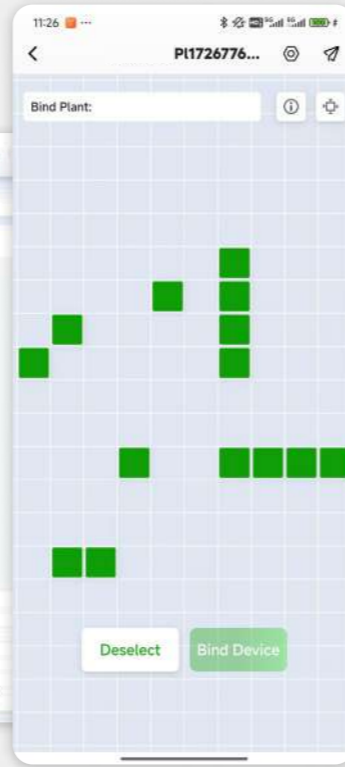
Balcony PV System

Smart PV Plant Layout → Modular Monitoring

Intelligent layout with rapid module-level visualization
One-stop user view with module-level operational monitoring



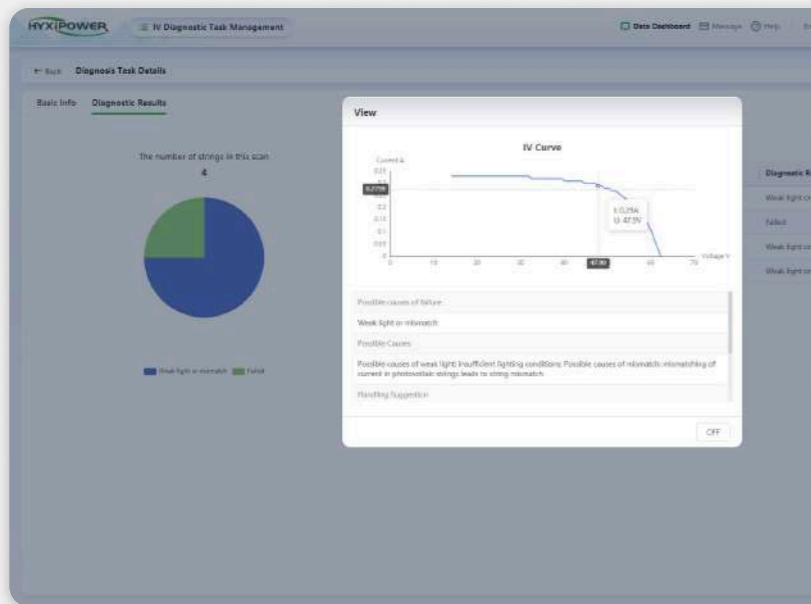
Smart PV Plant Layout



Smart PV Plant Layout

One-Click Diagnostics

For utility safety monitoring



IV Diagnostics



One-Click Diagnostics

AR Visualization Screen:

From "Overall View" to "Single-Plant Cockpit",
Key Data at a Glance



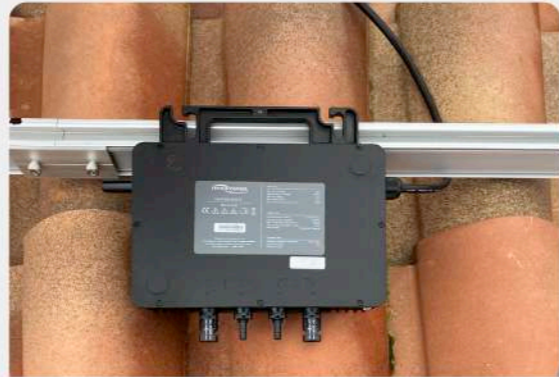
HYXIPOWER Energy Storage Monitoring Center



Energy Storage Cockpit

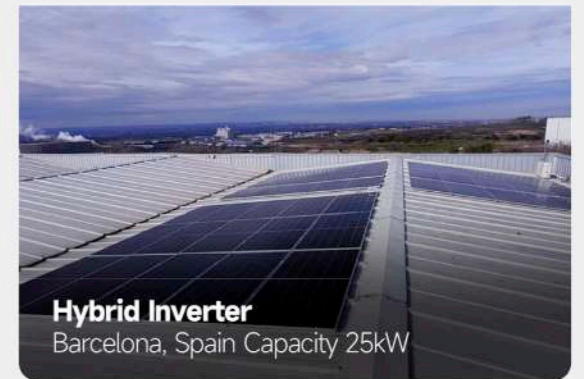
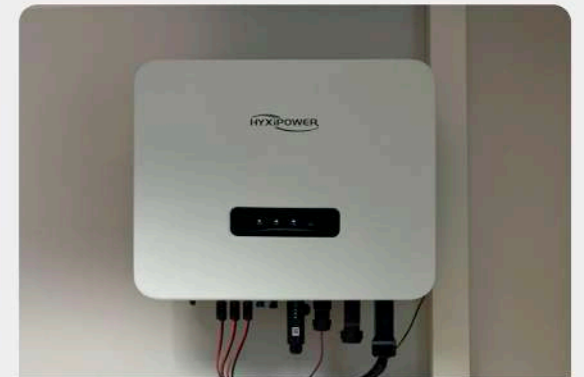
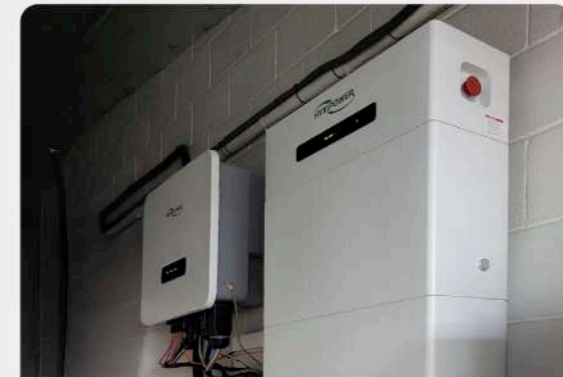
Projects and Cases

Residential Solution



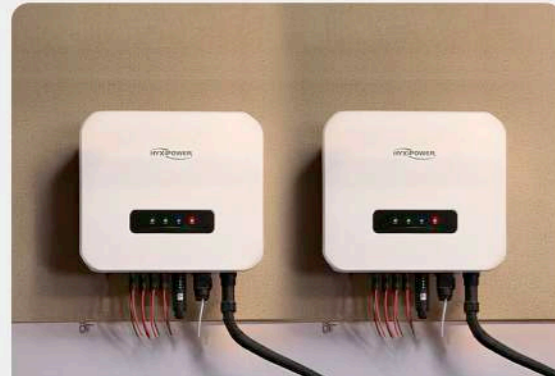
Projects and Cases

Residential Solution

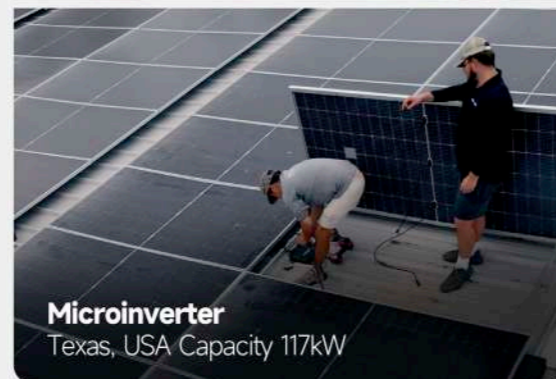


Projects and Cases

Residential Solution



String Inverter
Eure-et-Loir, France Capacity 45kW



Microinverter
Texas, USA Capacity 117kW



Hybrid Inverter
Brisbane, Australia Capacity 6.6kW



Hybrid Inverter High Voltage Battery
Rheinland-Pfalz, Germany Capacity 50kW

Projects and Cases

C&I PV and ESS Solution



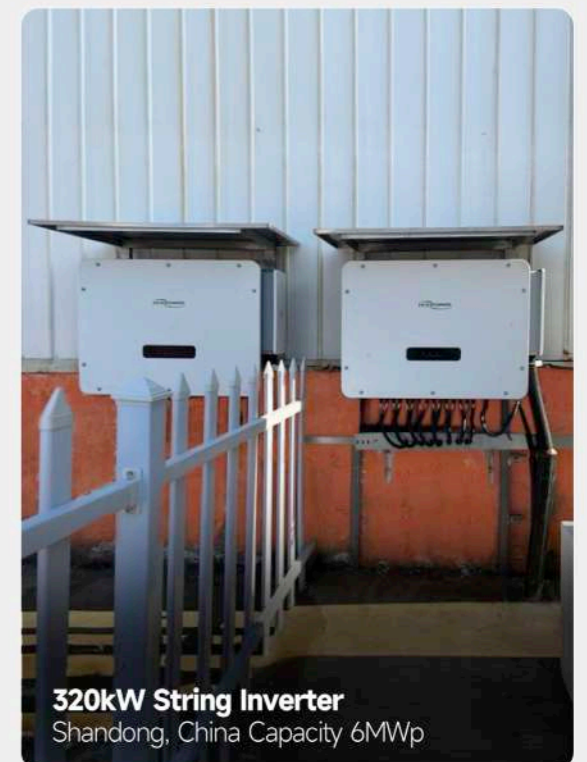
5MWh Container ESS
Zhejiang, China Capacity 400MWh



5MWh Container ESS
Shandong, China Capacity 5MW/10MWh



50kW/110kW String Inverter
Zhejiang, China Capacity 4MWp



320kW String Inverter
Shandong, China Capacity 6MWp