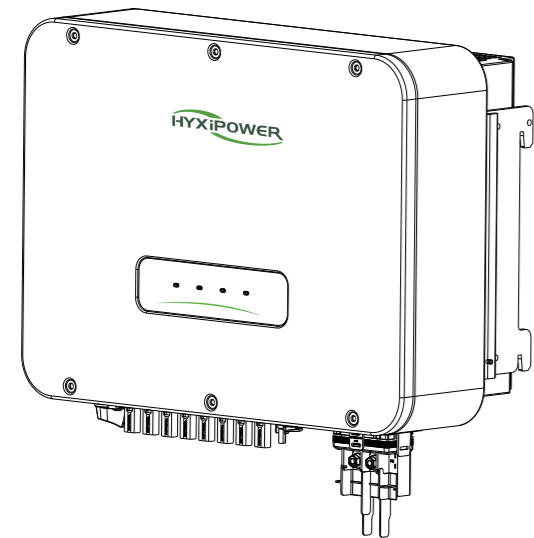


# STRING INVERTER

HYX-S30K-T / HYX-S33K-T / HYX-S36K-T  
HYX-S40K-T / HYX-S50K-T



## 1 Safety Instructions

### ⚠ DANGER

- Exposure of the PV module to sunlight will generate dangerous voltages.
- Make sure the inverter doesn't have any electrical connections before installation.
- Make sure that all cables are not energized before making electrical connections.
- Do not open the enclosure at any time. Unauthorized opening will void guarantee and warranty claims, and HYXIPWOER shall not be held liable for any damage caused.

### ⚠ WARNING

- Only qualified personnel can perform the wiring of the PV system.
- Any improper operation during wiring may result in equipment damage or personal injury or death.
- All the warning labels and nameplate on the inverter body must be clearly visible and not be removed, covered or pasted.

### ⚠ CAUTION

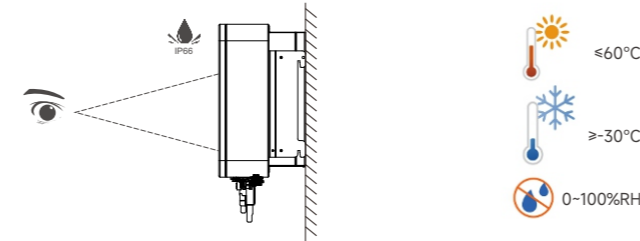
- Before installing the equipment, please check whether the goods are complete and whether there is any damage according to the packing list.
- Improper handling of the equipment may result in minor, serious or contusive injuries.
- The wiring process must follow the relevant rules of the local power grid and the relevant safety instructions for PV modules.
- After the inverter has been shut down, there is still a risk of burns. After the inverter has cooled down, it is necessary to wear protective gloves before operating the inverter.

### Symbol Description

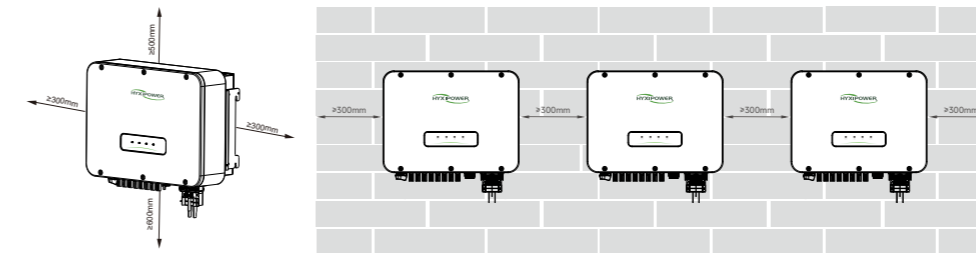
Symbol	Description
	Disconnect power for at least 5 minutes before servicing the inverter
	Do not touch the inverter housing while it is in operation
	Only install and operate the inverter with professional personnel
	Do not remove the DC input connector or the AC output connector when the inverter is running
	Read the manual
	CE mark of conformity
	Do not dispose of the inverter as household waste
	High touch current, earth connection essential before connecting supply

## 2 Installation Preparation

### 2.1 Installation Environment Requirements

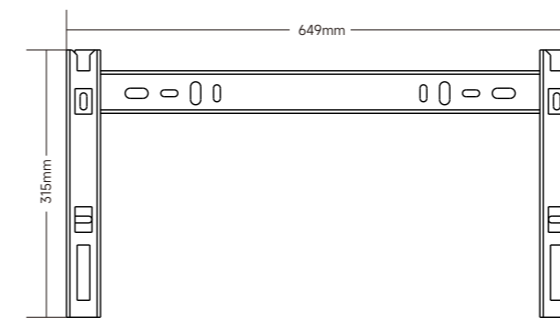


### 2.2 Installation Space Requirements



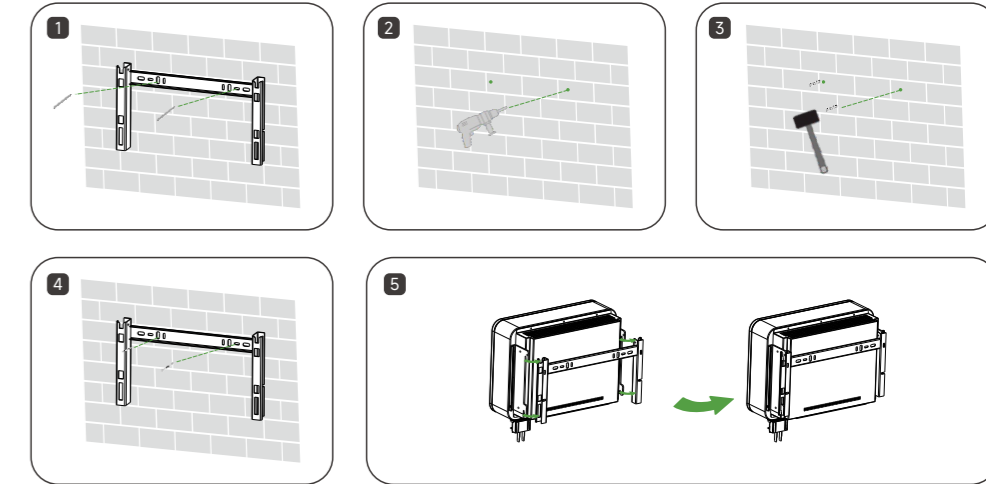
## 3 Installing the Inverter

### 3.1 Hanging Plate Size



### 3.2 Installation Steps

- Step 1: Place the wall plate horizontally on the wall, recommend to select the hole position shown in the picture and mark the drilling position.
- Step 2: Drill a hole at the location shown, the depth of the hole is about 70mm.
- Step 3: Place the expansion tube and install the wall plate using the expansion bolt assembly.
- Step 4: Secure the mounting plate with M6 screws.
- Step 5: Hang the mounting lugs onto the peg plate and tighten them with M6 screws and finally lock them.



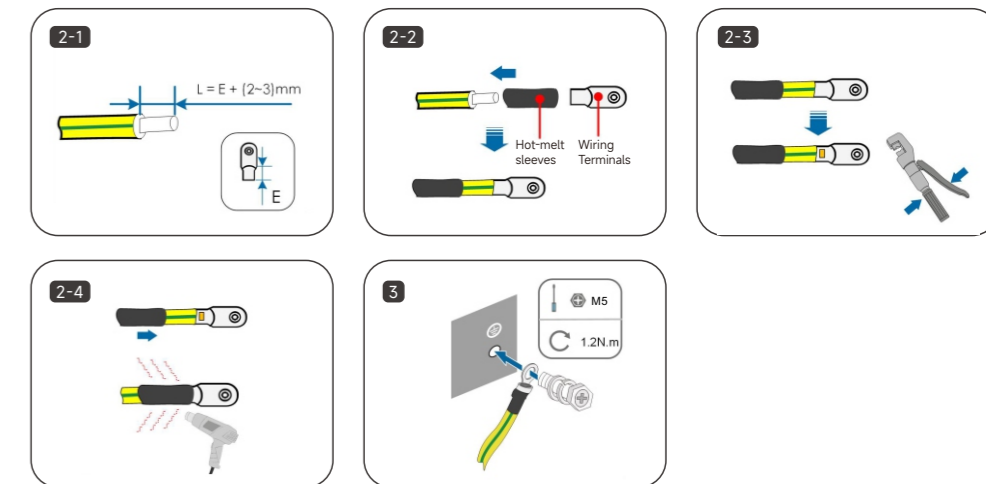
## 4 Electrical Connection

### 4.1 Grounding Procedure

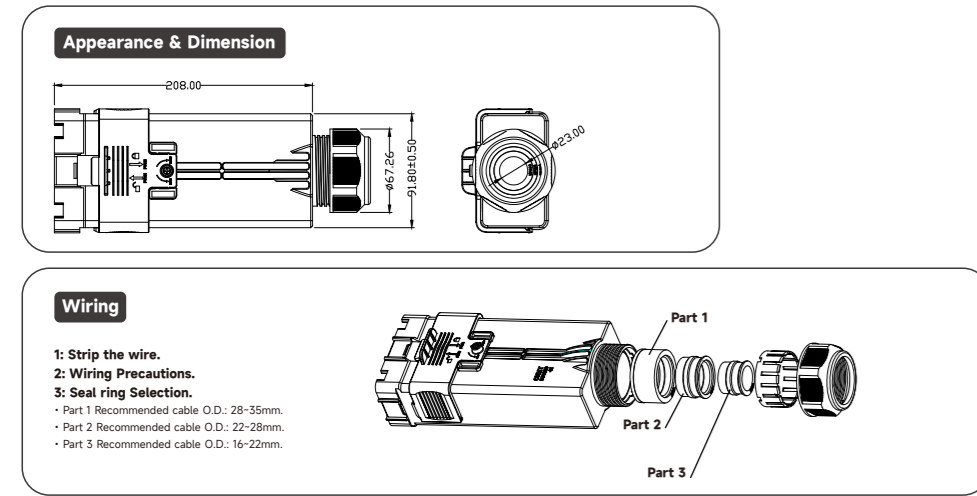
The cross-sectional area of the secondary grounding cable must be the same as the cross-sectional area of the PE core in the AC cable.

The secondary grounding cable and terminal block are to be prepared by the customer.

- Step 1: Make the cable and crimp the terminal block.
- Step 2: Remove the screws from the grounding terminal and use a screwdriver to secure the cable.
- Step 3: Apply silicone or paint to the grounding terminal to improve its corrosion resistance.

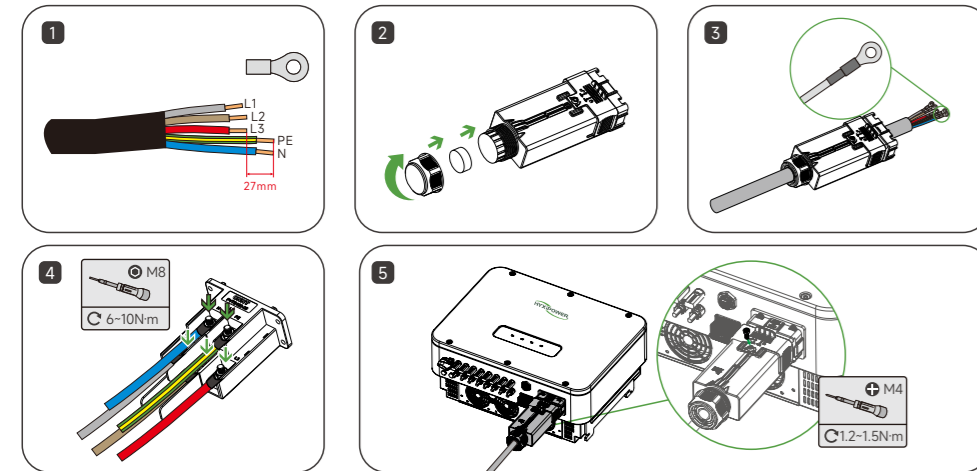


## 4.2 AC Connector Wiring Instructions



### Installation Steps

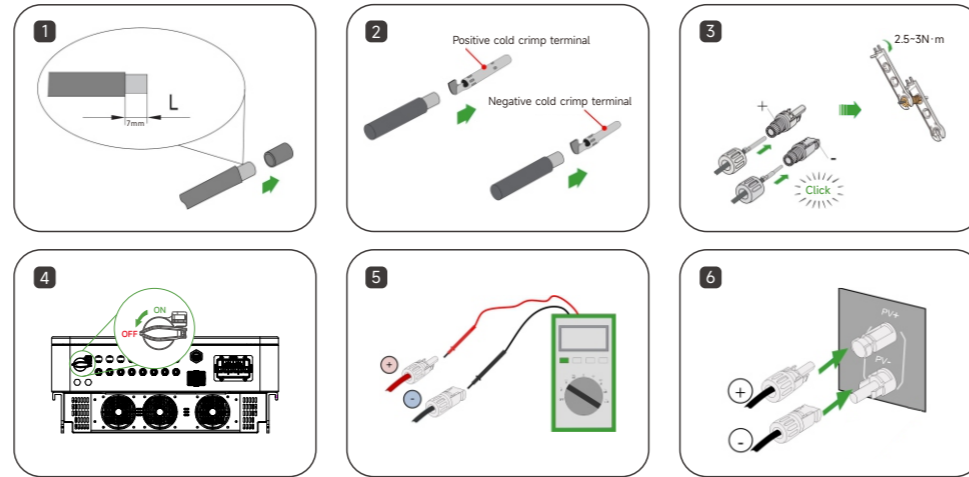
- Step 1: Prepare the AC cable.
- Step 2: Open the AC waterproof box.
- Step 3: Prepare the AC cable by stripping the cable to the recommended length, passing it through the waterproof connection box, and crimping the OT terminal.
- Step 4: Loosen the AC terminal screw, then securely fasten the prepared AC cable onto the AC terminal.
- Step 5: Tighten the AC waterproof box and lock the bottom waterproof bolts.



## 4.3 DC Side Connection

- Step 1: Strip all DC cable insulation by approximately 7mm.
- Step 2: Use crimping pliers to bundle the cable ends at the terminals.
- Step 3: Insert the cable through the cable sealing sleeve, insert it into the insulating sleeve and fasten it, and pull the cable gently to make sure it is tightly connected. Use 2.5-3N/m force to tighten the sealing sleeve and insulation sleeve.

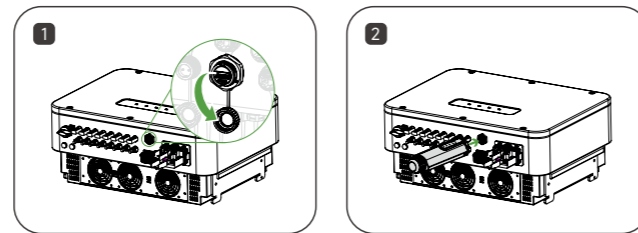
- Step 4: Turn the DC switch to "OFF" manually.
- Step 5: Check the PV string cable connections for correct polarity and make sure that the open circuit voltage does not exceed the inverter input limit of 1000V.
- Step 6: Connect the PV connectors to the corresponding terminals until a click is heard and seal the vacant DC terminals with MC4 waterproof plugs.



## 5 Communication Connection

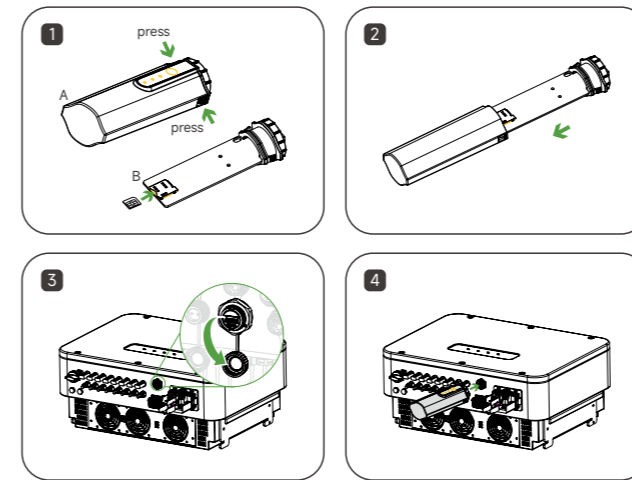
### 5.1 DCS Installation (WIFI module)

- Step 1: Remove the waterproof cover at the communication interface of the inverter.
- Step 2: Insert DCS into the corresponding communication terminal at the bottom of the inverter and tighten it to ensure it is secure.



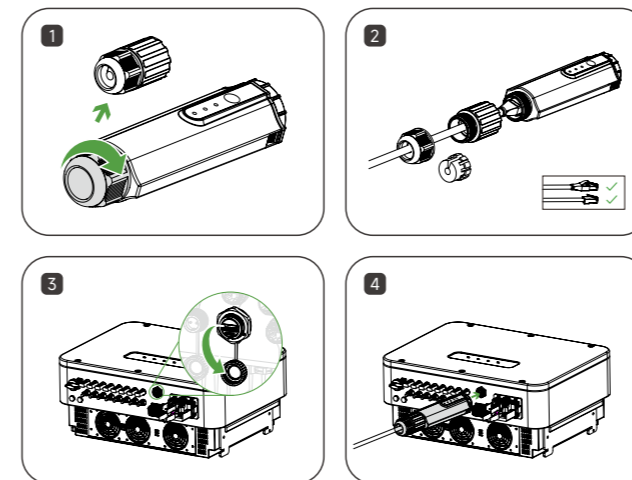
### 5.2 DCS Installation (4G module)

- Step 1: Remove the protective cover of DCS and insert the SIM card.
- Step 2: Install the waterproof cover of DCS.
- Step 3: Remove the waterproof cover at the communication interface of the inverter.
- Step 4: Insert DCS into the corresponding communication terminal at the bottom of the inverter and tighten it to ensure it is secure.



### 5.3 DCS Installation (WLAN module)

- Step 1: Replace the bottom plug of DCS with the WLAN plug.
- Step 2: Insert the network cable connector into the network junction.
- Step 3: Remove the waterproof cover at the communication interface of the inverter.
- Step 4: Insert DCS into the corresponding communication terminal at the bottom of the inverter and tighten it to ensure it is secure.

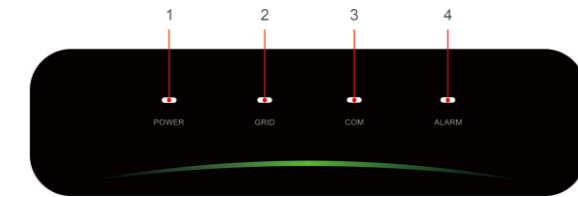


## 6 Power On the System

### 6.1 Pre-Run Checks

- Turn on the DC switch at the bottom of the inverter.
- Turn on the AC switch between the solar inverter and the power grid.
- Turn on the DC switch (if any) between the PV string and the solar inverter.
- Observe the LED indicators to check the status of the solar inverter.

### 6.2 LED Indicator Status Description



No.	Indicator	Status	Description
1	POWER	ON	Inverter Powered ON
		OFF	Inverter Powered OFF
2	GRID	ON	Grid Normal
		Blink 1	Grid Abnormal
		Blink 2	Grid Disconnected

No.	Indicator	Status	Description
3	COM.	ON	COM. Normal
		OFF	Meter COM. Fault
4	ALARM	OFF	Normal
		Blink 1	Inverter Internal Alarm
		Blink 2	Other Alarm

\* 1 time flashing, interval 1.5 seconds; 2 times flashing, interval 0.2 seconds.

## 7 System Commissioning

### 7.1 Installing the App

**Method 1**  
Download the "HYXiPOWER APP" from the app store:

- App Store (IOS)
- Google Play

**Method 2**  
Scan the QR code and download the APP :



App Download

### 7.2 App Quick Guide

For more information on using the HYXiPOWER APP, please scan the QR code.



App Quick Guide



support@hyxipower.com

Product information is subject to change without notice.  
© 2024 Zhejiang Hyxi Technology Co., Ltd. All rights reserved.

6.2.51.18.00166  
QL-HYX-SI30-50IK-T\_V1.0-202412\_EN