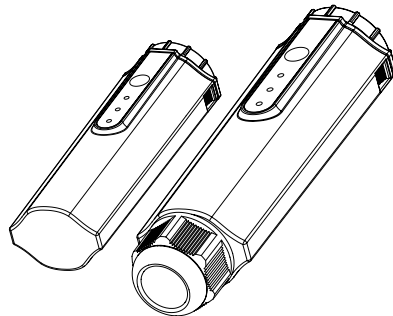


DATA COMMUNICATION STICK

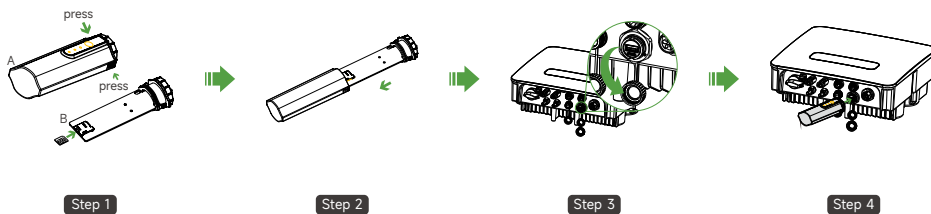
HYX-DCS-4G / HYX-DCS-WL



1 Installation Preparation

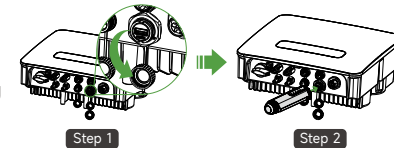
4G Module (Model: HYX-DCS-4G)

- Step 1: Remove the protective cover of the stick and insert the SIM card.
- Step 2: Install the waterproof cover of the communication stick.
- Step 3: Remove the waterproof cover at the communication interface of the inverter.
- Step 4: Insert the communication stick into the corresponding communication terminal at the bottom of the inverter and tighten it to ensure it is secure.



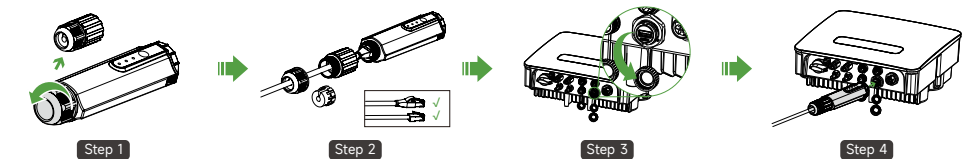
WIFI Module (Model: HYX-DCS-WL)

- Step 1: Remove the waterproof cover at the communication interface of the inverter.
- Step 2: Insert the communication stick into the corresponding communication terminal at the bottom of the inverter and tighten it to make sure it is secure.



LAN Module (Model: HYX-DCS-WL)

- Step 1: Replace the bottom plug of the communication stick with the LAN plug.
- Step 2: Insert the network cable connector into the network terminal.
- Step 3: Remove the waterproof cover at the communication interface of the inverter.
- Step 4: Insert the communication bar into the corresponding communication terminal at the bottom of the inverter and tighten it to ensure it is secure.



2 System Commissioning

2.1 Installing the App

Method 1

Download the "HYXiPOWER APP" from the app store:

- App Store (IOS)
- Google Play

Method 2

Scan the QR code and download the APP:



App Download

2.2 System Debugging

For more information on using the HYXiPOWER APP, please refer to the user manual "HYXiPOWER APP". For system configuration and debugging, please refer to the user manual "HYXiPOWER Local Debugging APP".

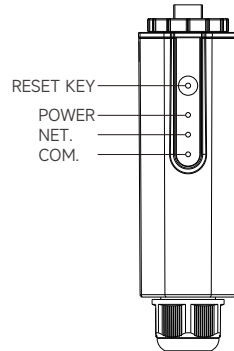


HYXiPOWER APP



Local Debugging APP

3 Introduction of Indicator Lights



Indicator	Status	Description
POWER	ON	Power ON
	OFF	Power OFF
NET	Solid Green	Connected to the server
	Flashing	Connecting to the server
	OFF	Disconnected from the server
COM	Solid Green	Normal communication with inverter
	Flashing	Communicating with the inverter
	OFF	Communication with inverter failed

* Reset Button:

Press 2 times to restart, Press 3 times to enable local configuration (AP mode), Press 4 times to restore factory settings (Within 1 second between pressing).

Product information is subject to change without notice.

© 2024 Zhejiang Hyxi Technology Co., Ltd. All rights reserved.

6.2.51.18.00142

QL_HYX-DCS-4G(WL)_V1.1-202408_EN



www.hyxipower.com

Zhejiang Hyxi Technology Co., Ltd.